



Labor Market Information 101

Presented by Michael Moore, R&P Research Supervisor, to the
Wyoming Vocational Rehabilitation Managers' Meeting, August 13,
2025



Labor Market Information 101

About Research & Planning

OUR ORGANIZATION:

R&P is an exclusively statistical entity within DWS.

WHAT WE DO:

R&P collects, analyzes, and publishes timely and accurate labor market information (LMI) meeting established statistical standards.

OUR CUSTOMERS:

LMI makes the labor market more efficient by providing the public and the public's representatives with the basis for informed decision making.



Labor Market Information 101



About Research & Planning

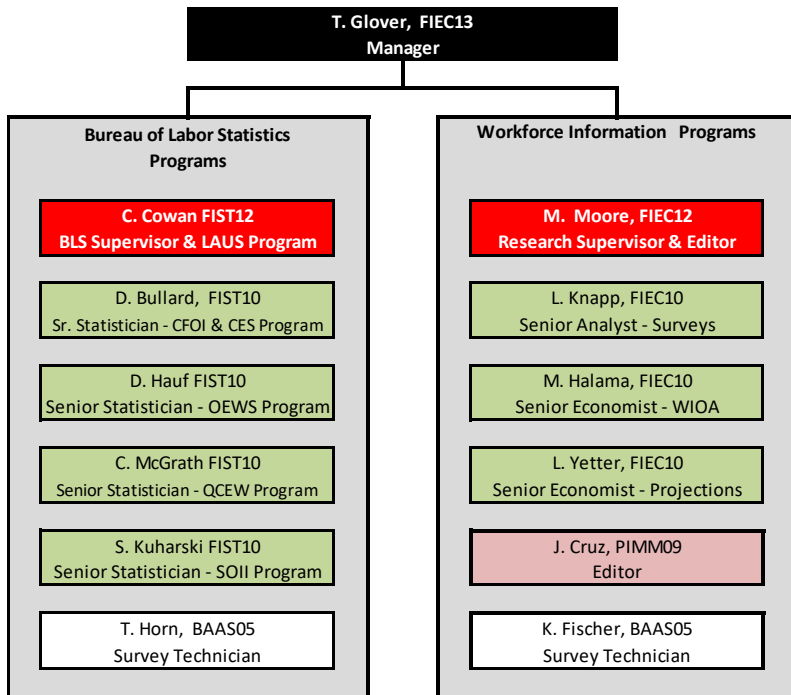
444 W. Collins Drive
Suite 3100
Casper, WY 82601

<https://doe.state.wy.us/LMI>



Labor Market Information 101

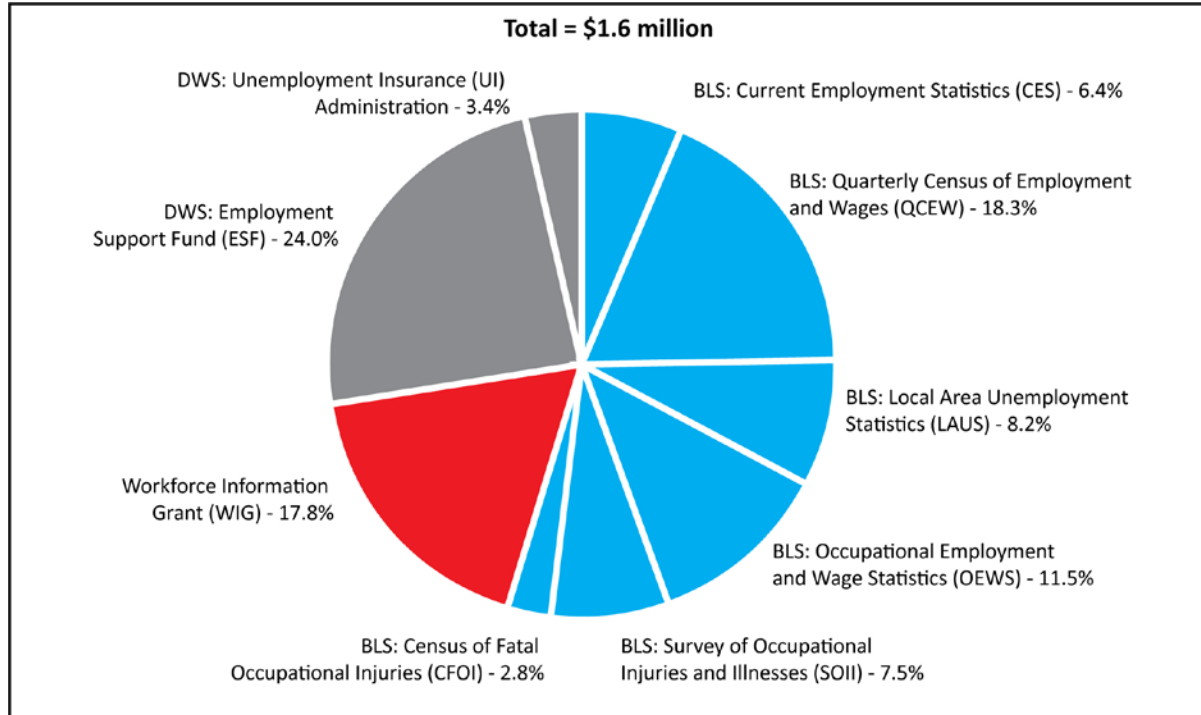
About Research & Planning: Org Chart



Labor Market Information 101



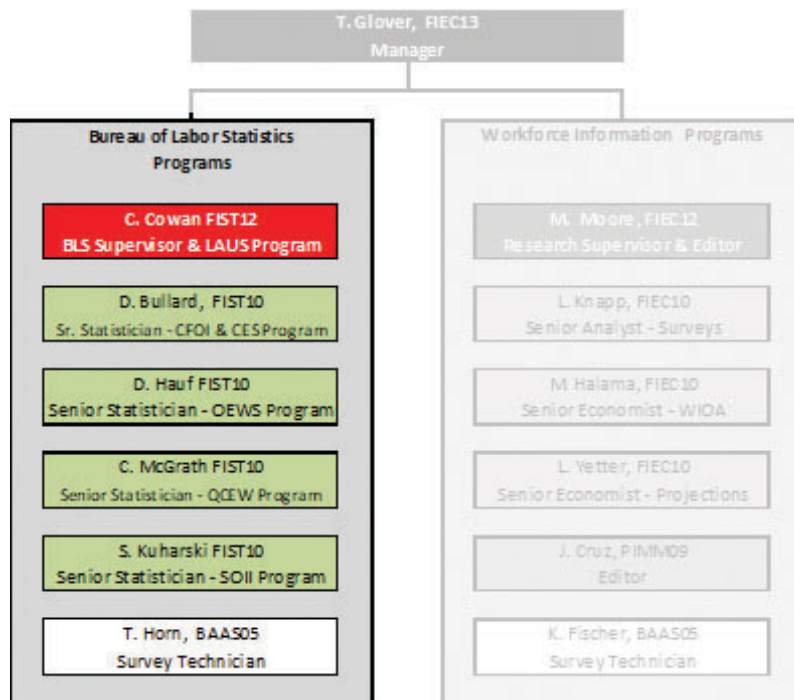
About Research & Planning: Funding





Labor Market Information 101

U.S. Bureau of Labor Statistics (BLS) Programs





Labor Market Information 101

BLS Programs

Local Area Unemployment Statistics (LAUS)

<https://doe.state.wy.us/LMI/laus.htm>

- Produced monthly
- State, county, MSA, and four cities
 - Labor force
 - Employment
 - Unemployment
 - Unemployment rate



Labor Market Information 101

BLS Programs

Local Area Unemployment Statistics (LAUS)

Laramie County, June 2025

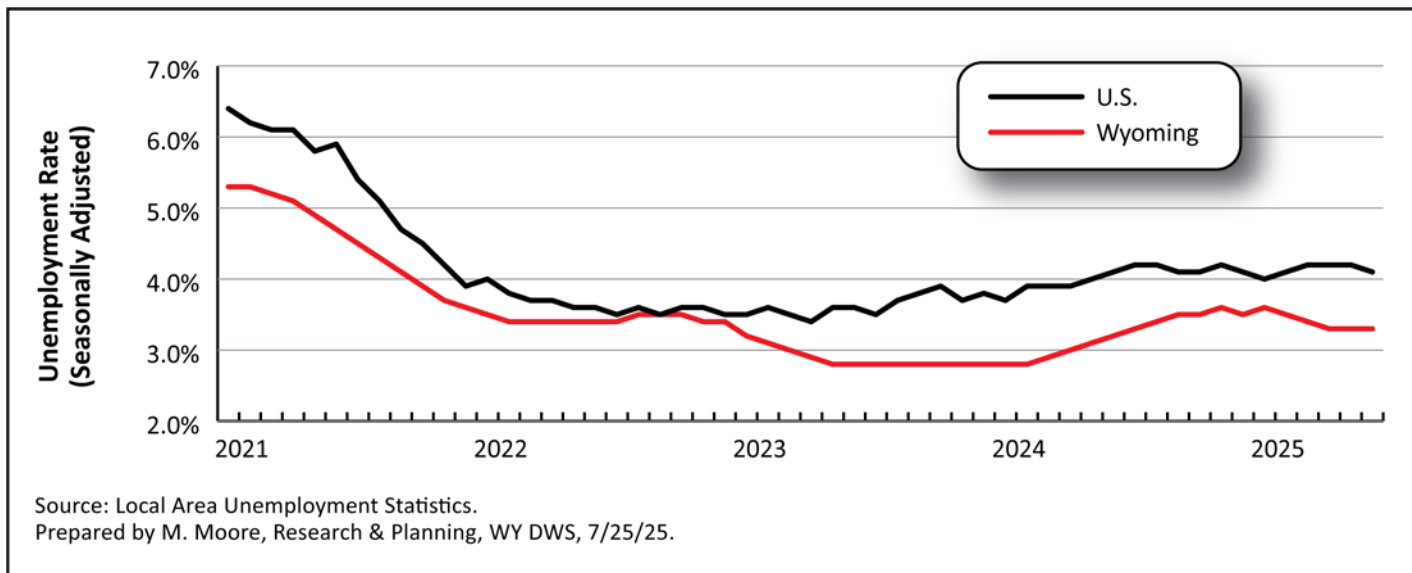
- Labor force: 48,091
- Employment: 46,295
- Unemployment: 1,796
- Unemployment rate: 3.7%



Labor Market Information 101

BLS Programs

Local Area Unemployment Statistics (LAUS) – Seasonally Adjusted U.S. and Wyoming, January 2021-June 2025

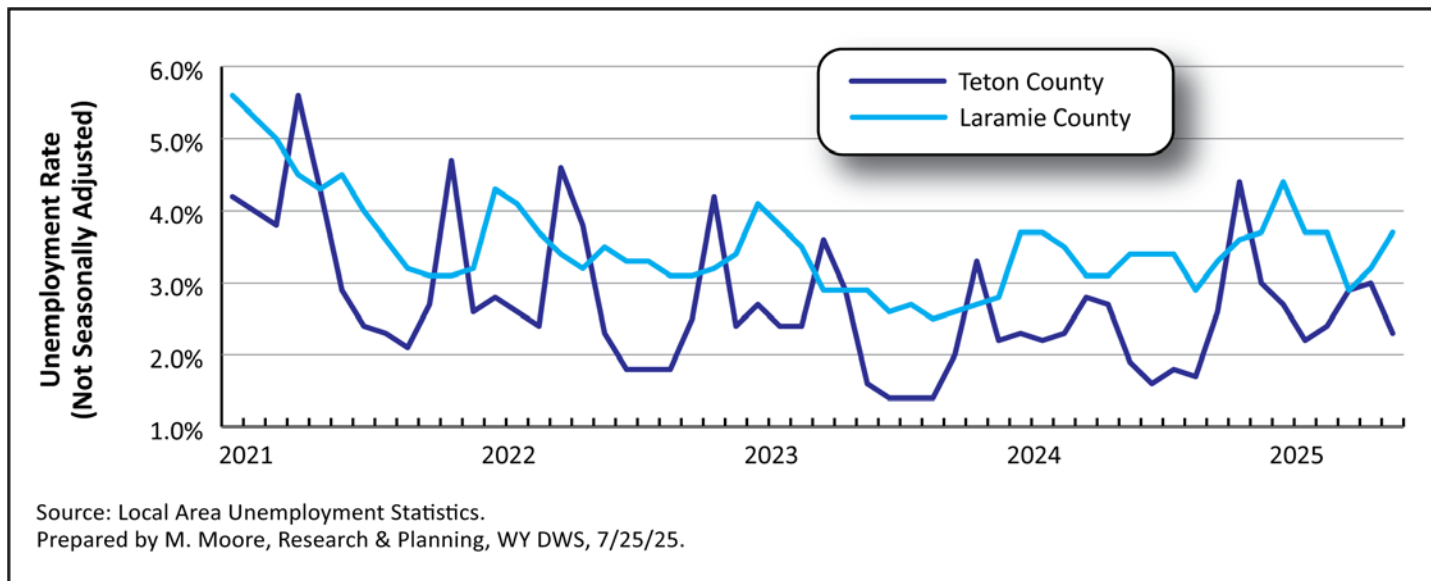




Labor Market Information 101

BLS Programs

Local Area Unemployment Statistics (LAUS) – Not Seasonally Adjusted Laramie and Teton Counties, January 2021-June 2025





Labor Market Information 101

BLS Programs

Occupational Employment and Wage Statistics (OEWS)

<https://doe.state.wy.us/LMI/oes.htm>

- Published twice per year
 - March and September
- Employment estimates
 - Hourly wage
 - Annual wage
- By industry, state, and sub-state region



Labor Market Information 101

BLS Programs

Occupational Employment and Wage Statistics (OEWS)

Registered Nurses in Wyoming, March 2025

- Employment: 5,180
- Median hourly wage: \$40.39
- Median annual wage: \$84,009

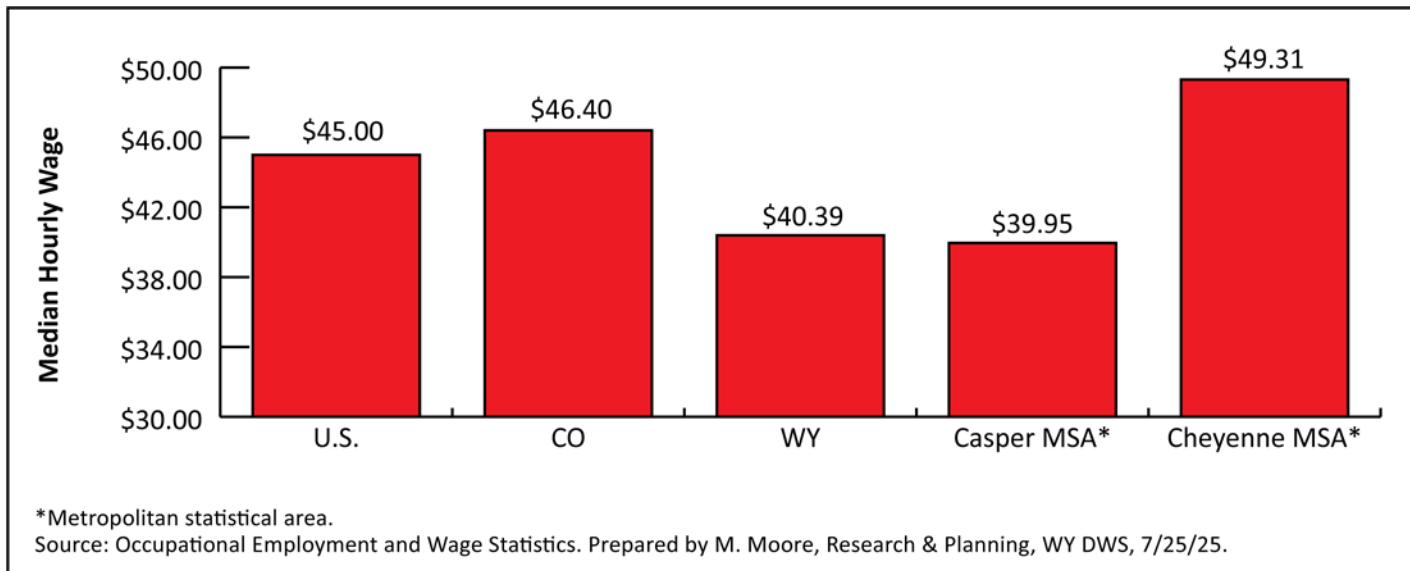


Labor Market Information 101

BLS Programs

Occupational Employment and Wage Statistics (OEWS)

Registered Nurses by Selected Region, March 2025





Labor Market Information 101

BLS Programs

Quarterly Census of Employment and Wages (QCEW)

https://doe.state.wy.us/LMI/toc_202.htm

- Published quarterly
 - Quarterly news release
- Detailed tables by county, industry
 - Number of units (employers)
 - Average monthly employment
 - Total wages
 - Average weekly wage



Labor Market Information 101



BLS Programs

Quarterly Census of Employment and Wages (QCEW) Construction (NAICS 23), 2024Q4

- Units: 3,557
- Average monthly employment: 24,254
 - Total wages: \$483,112,878
 - Average weekly wage: \$1,532

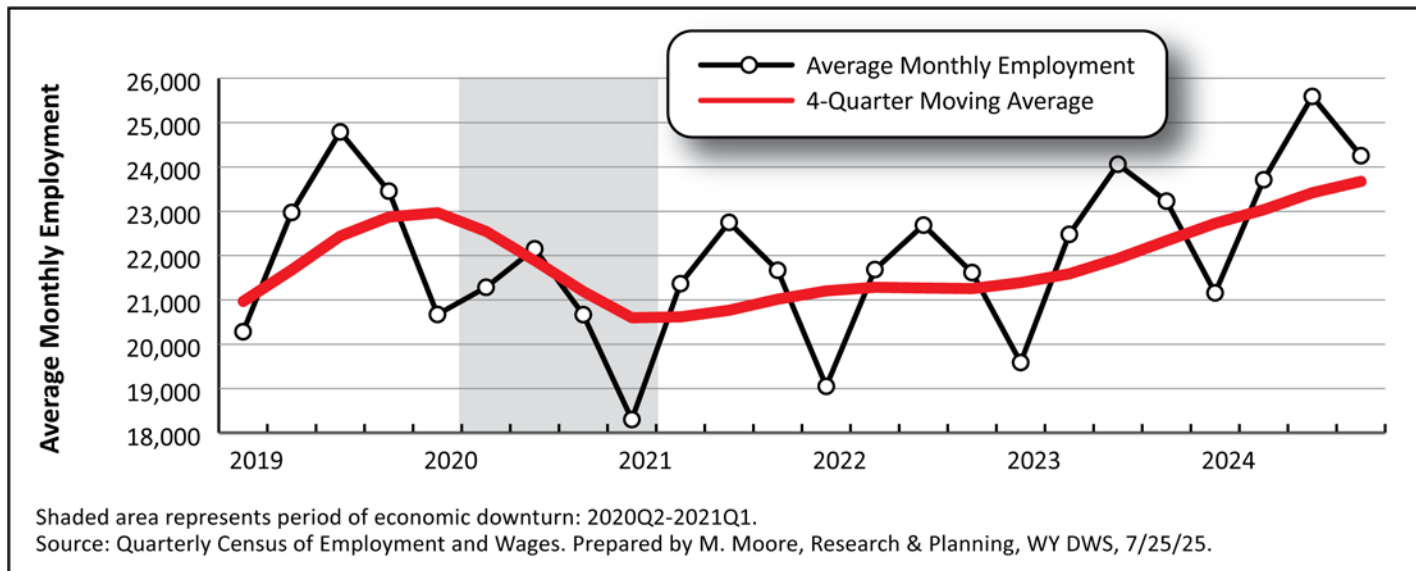


Labor Market Information 101

BLS Programs

Quarterly Census of Employment and Wages (QCEW)

Average Monthly Employment in Construction in WY, 2019Q1-2024Q4





Labor Market Information 101

BLS Programs

Current Employment Statistics (CES)

<https://doe.state.wy.us/LMI/ces.htm>

- Monthly estimates of employment, hours, and earnings by industry
 - State of Wyoming, Casper MSA, Cheyenne MSA
- Sometimes called the “Establishment Survey,” “Nonfarm Employment,” or “Payroll Employment”
 - Measures job growth month by month



Labor Market Information 101

BLS Programs

Current Employment Statistics (CES)

National and State Data

The same program that says:

- US payrolls grew by 147,000 jobs from May to June
- Largest job gains were in government and health care

Also provides employment data for all 50 states:

- Wyoming employment rose by 4,300 jobs (1.4%) from June 2024 to June 2025
 - Largest job gains were in government and leisure & hospitality



Labor Market Information 101

BLS Programs

Current Employment Statistics

Data for Metro Areas

- Cheyenne MSA employment rose by 600 jobs (1.2%) from June 2024 to June 2025
- Casper MSA employment fell by 200 jobs (-0.5%) from June 2024 to June 2025



Labor Market Information 101

BLS Programs

Census of Fatal Occupational Injuries (CFOI)

<https://doe.state.wy.us/LMI/CFOI.htm>

- Published annually
- Occupational fatalities
- Persons killed on the job in Wyoming
 - Number of workplace deaths
 - Type of event
 - By industry



Labor Market Information 101

BLS Programs

Census of Fatal Occupational Injuries (CFOI)

Workplace Fatalities, 2023

- Number of fatalities: 45
- Two-thirds were in transportation incidents
- Deaths in natural resources & mining: 17

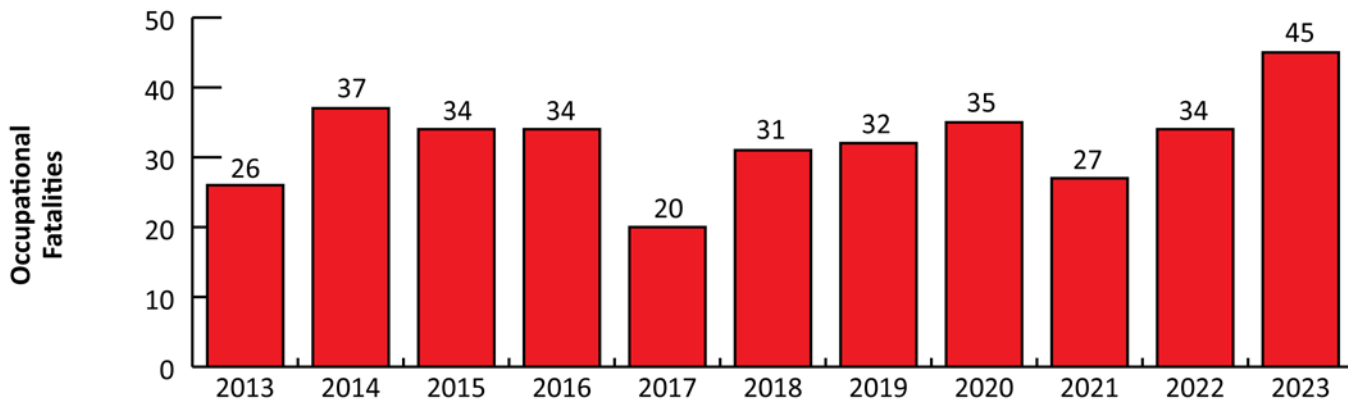


Labor Market Information 101

BLS Programs

Census of Fatal Occupational Injuries (CFOI)

Number of Occupational Fatalities in WY, 2013-2023



Source: Occupational Employment and Wage Statistics.
Prepared by M. Moore, Research & Planning, WY DWS, 7/25/25.



Labor Market Information 101

BLS Programs

Survey of Occupational Injuries and Illnesses (SOII)

<https://doe.state.wy.us/LMI/OSH/toc.htm>

- Published annually
- Workplace injuries (days away from work)
 - Number of incidents
 - Types of incidents
- Incidence rate (per 100 full-time workers)



Labor Market Information 101

BLS Programs

Survey of Occupational Injuries and Illnesses (SOII)

Workplace Injuries, 2023

- Number of workplace injuries: 2,600
- Incidence rate in WY (private industry): 2.7
- Incidence rate in U.S. (private industry): 2.4

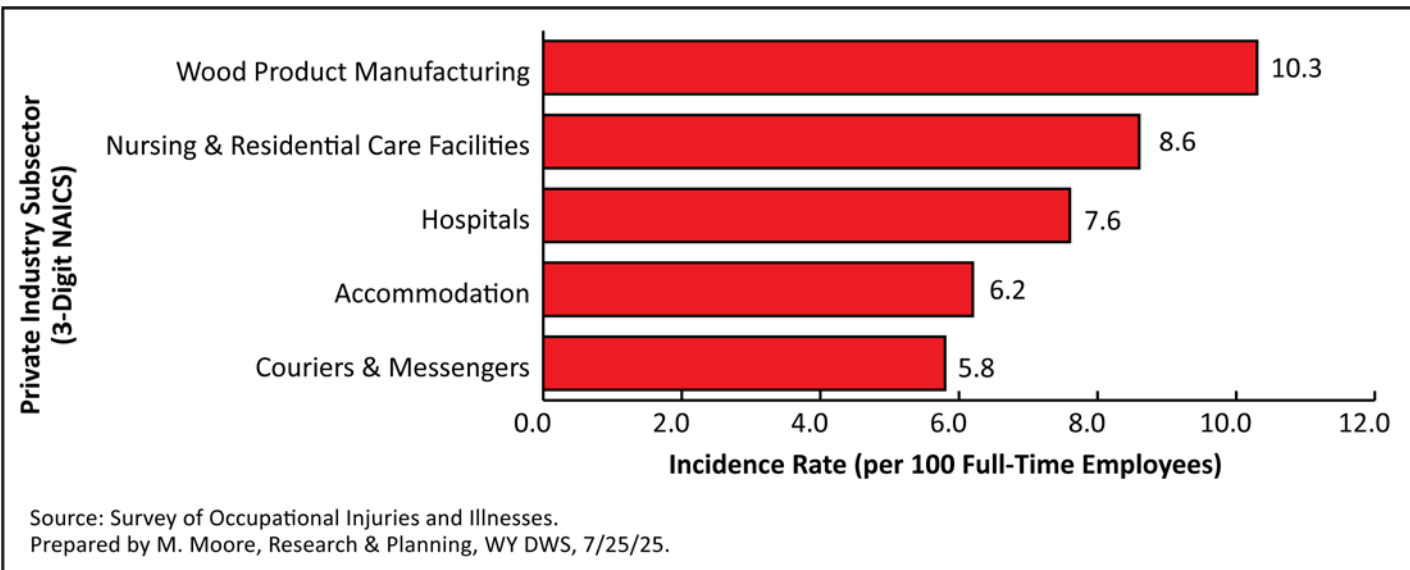


Labor Market Information 101

BLS Programs

Survey of Occupational Injuries and Illnesses (SOII)

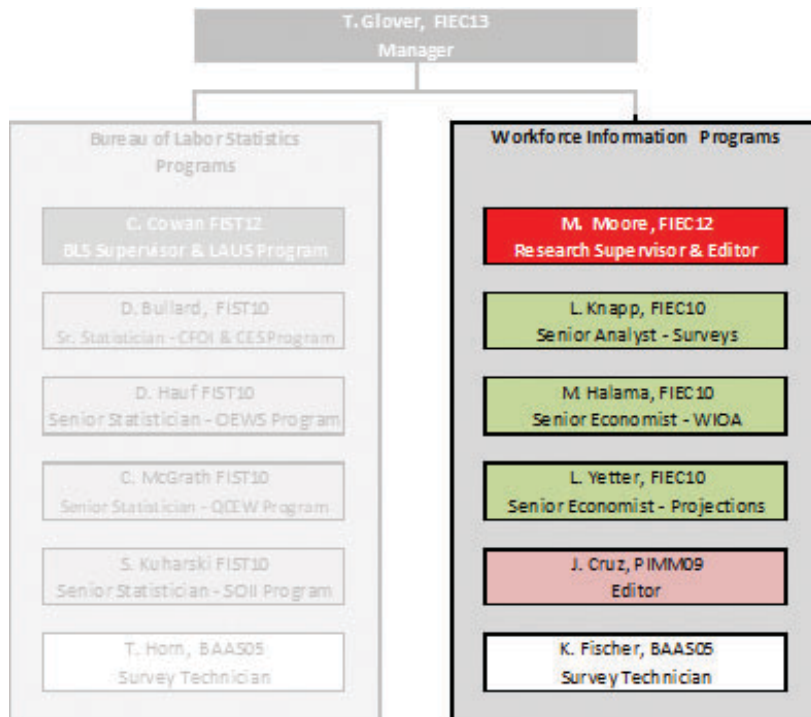
Private Industry Subsectors with Highest Incidence Rates in WY, 2023





Labor Market Information 101

Workforce Information Programs





Labor Market Information 101

Workforce Information Programs

Wyoming Labor Force Trends

<https://doe.state.wy.us/LMI/trends.htm>

- Monthly publication
- Articles and data
- Available online
- 1,300 subscribers





Labor Market Information 101

Workforce Information Programs

Wyoming Labor Force Trends

Recent Articles

- Construction Continues to Drive Wyoming Job Growth (July 2025)
 - Unemployment Insurance Claims Rise in 2024 (June 2025)
- Wyoming Projected to Outpace the U.S. in STEM Job Growth (May 2025)
- Wyoming Projected to Add 8,000 Jobs from 2024-2026 (March 2025)

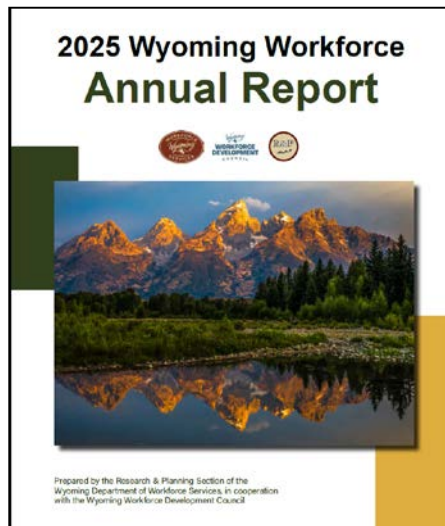


Labor Market Information 101

Workforce Information Programs

2025 Wyoming Workforce Annual Report

https://doe.state.wy.us/annual_report.htm



- Annual publication
- In conjunction with Wyoming Workforce Development Council
- Overview of all BLS & R&P work



Labor Market Information 101

Workforce Information Programs

Industry and Occupational Employment Projections

<https://doe.state.wy.us/LMI/projections.htm>

- Long- and short-term
- Ten- and two-year projections
- Industry and occupation
- Total projected job openings



Labor Market Information 101

Workforce Information Programs

Industry and Occupational Employment Projections

Long-Term Industry Projections, 2022-2032

- Projected growth: 33,247 new jobs (12.2%)

Growth industries:

- Accommodation & food services: 5,353 (16.0%)
- Health care & social assistance: 4,621 (13.7%)
 - Construction: 2,938 (18.7%)



Labor Market Information 101

Workforce Information Programs

Industry and Occupational Employment Projections

Long-Term Occupational Projections, 2022-2032

Openings due to:

- Growth
- Exits
- Transfers
- Total openings = growth + exits + transfers
- Education and experience requirements



Labor Market Information 101

Workforce Information Programs

Industry and Occupational Employment Projections Long-Term Occupational Projections, 2022-2032

Occupation: Heavy & Tractor-Trailer Truck Drivers (53-3032)

Employment		Types of Openings				Requirements		
Base (2022)	Projected (2032)	Growth	Exits	Transfers	Total	Education	Experience	Training
6,577	7,752	1,175	3,243	4,197	8,615	Postsecondary non-degree	None	Short-term on the job training

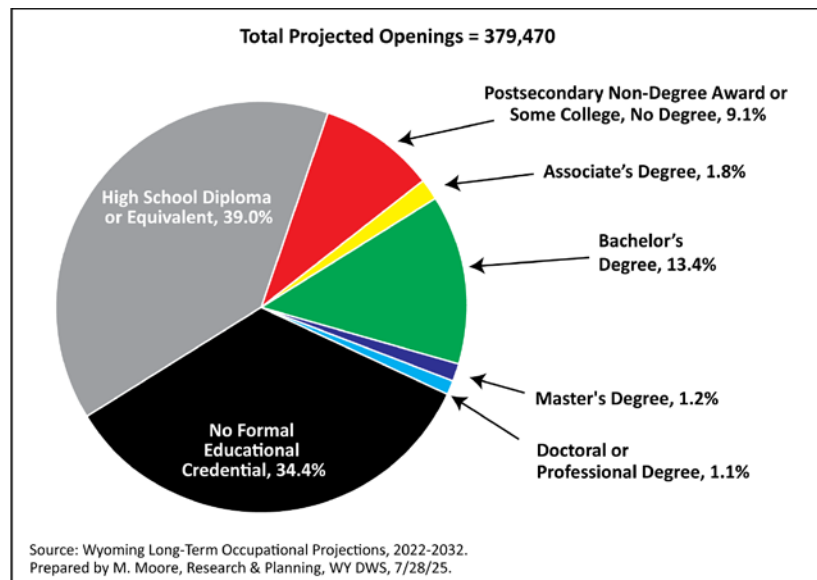


Labor Market Information 101

Workforce Information Programs

Long-Term Occupational Projections, 2022-2032

Total Projected Openings by Educational Requirement





Labor Market Information 101

Workforce Information Programs

Unemployment Insurance (UI) Claims Data

<https://doe.state.wy.us/LMI/UI.htm>

- Weekly data
- Monthly reports
- Annual data and article



Labor Market Information 101

Workforce Information Programs

Unemployment Insurance (UI) Claims Data

Weekly Claims Data

- Published each Friday
- Initial and continued claims

Data by:

- County
- Industry
- Sex and gender

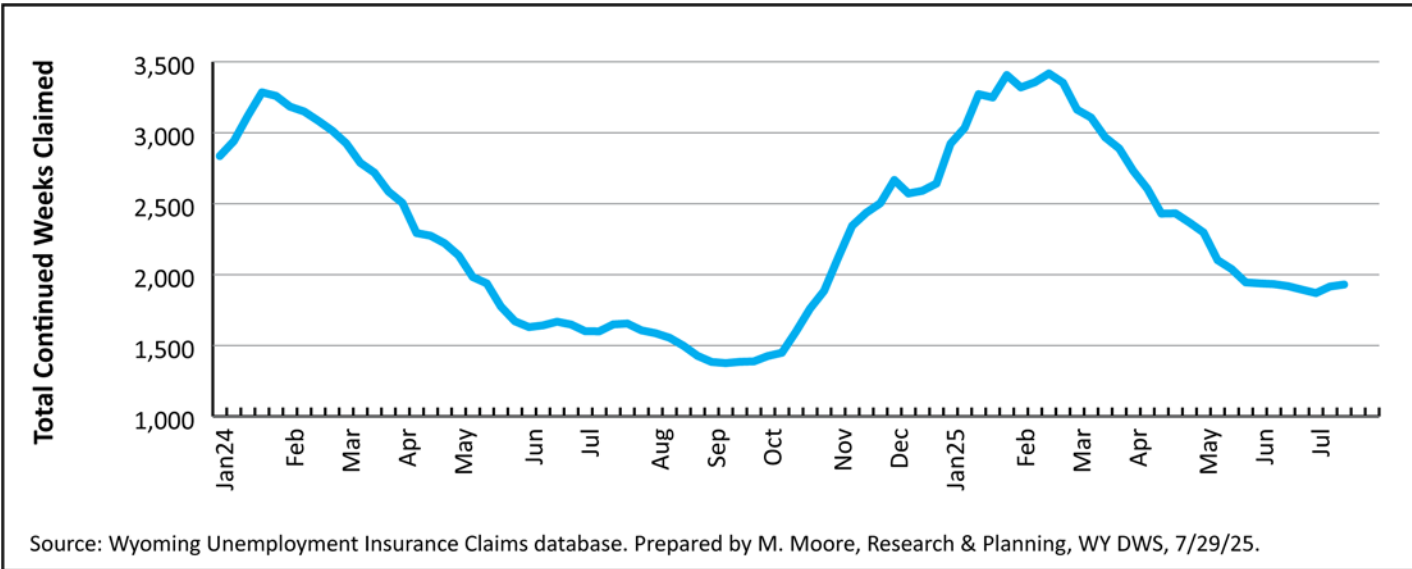


Labor Market Information 101

Workforce Information Programs

Weekly UI Claims Data

Total Continued Claims, 2024-2025



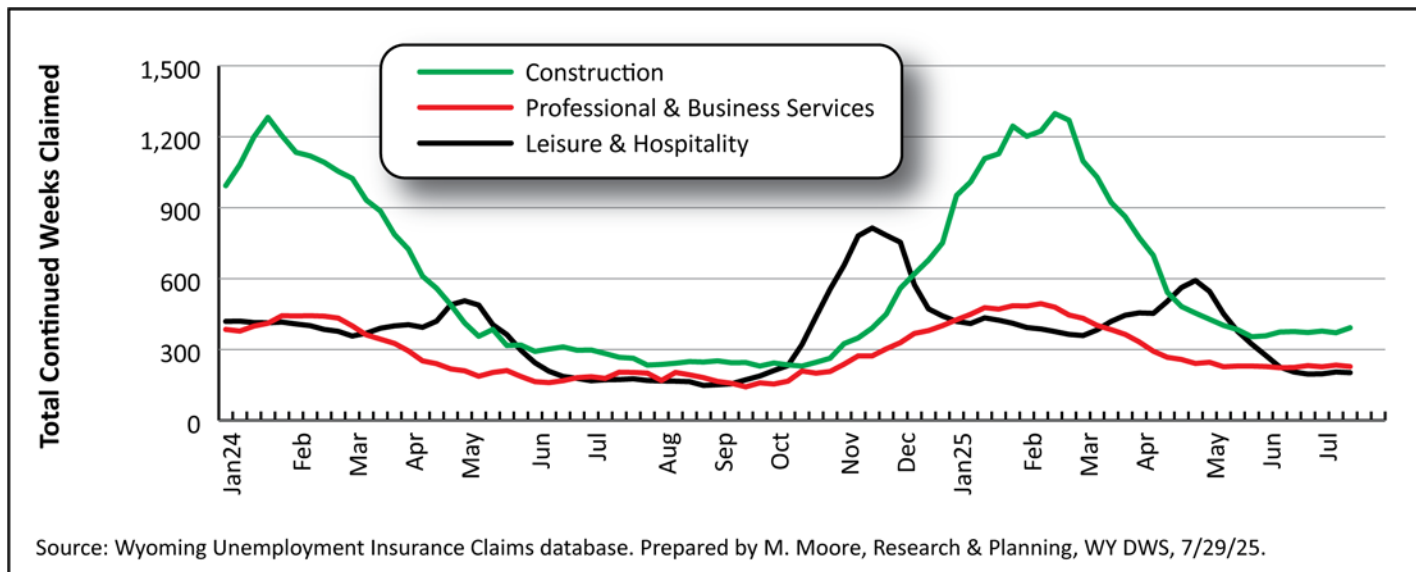


Labor Market Information 101

Workforce Information Programs

Weekly UI Claims Data

Continued Claims by Selected Industry, 2024-2025



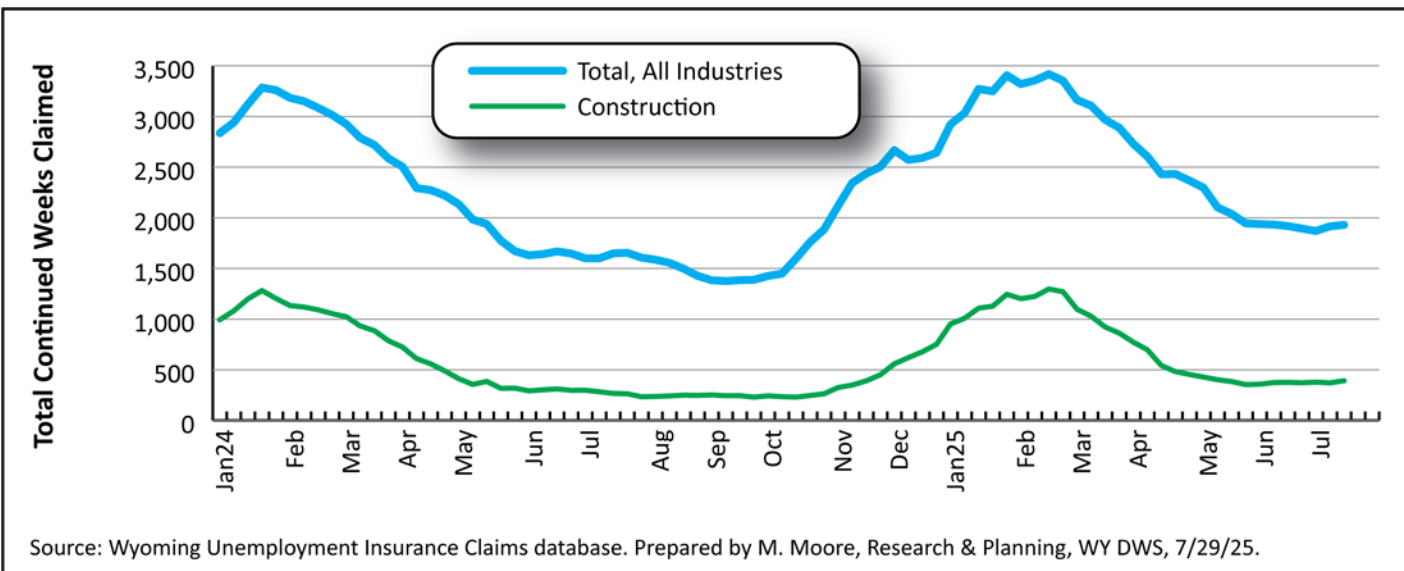


Labor Market Information 101

Workforce Information Programs

Weekly UI Claims Data

Continued Claims, Total and Construction, 2024-2025





Labor Market Information 101

Workforce Information Programs

Unemployment Insurance (UI) Claims Data Monthly Claims Report

- Report published monthly
- Initial and continued claims
- Over-the-month and over-the-year change

Data by:

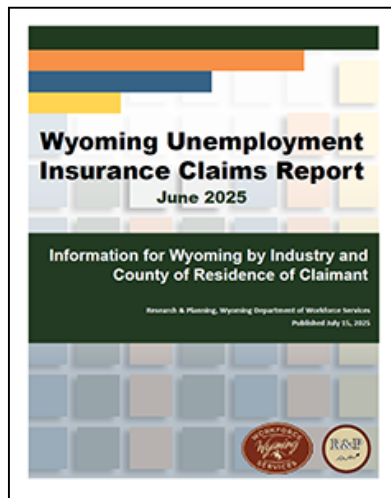
- County
- Industry



Labor Market Information 101

Workforce Information Programs

Unemployment Insurance (UI) Claims Data Monthly Claims Report, June 2025



- Initial claims:
 - 1,206 (+60, 5.2%)
- Increases in construction and manufacturing
- Continued claims:
 - 8,128 (+1,101, 15.7%)
- Increase in construction (+286, 22.4%)



Labor Market Information 101

Workforce Information Programs

Unemployment Insurance (UI) Claims Data

Annual Data for 2024

- 10,972 recipients
- 18.1% exhaustion rate
- 10.3 average weeks claimed
- \$51.7 million in benefits paid



Labor Market Information 101

Workforce Information Programs

Demographics of the Workforce

<https://doe.state.wy.us/LMI/demographics.htm>

- Updated annually
- Link Wage Records with other administrative databases
 - 2000-2024

Data by:

- County
- Industry
 - Sex
 - Age



Labor Market Information 101

Workforce Information Programs

Demographics of the Workforce

Selected Statistics for 2024

- 351,812 working in WY in 2024
 - 44.2% resident males
 - 39.2% resident females
- 16.6% nonresidents (individuals for whom data aren't available)

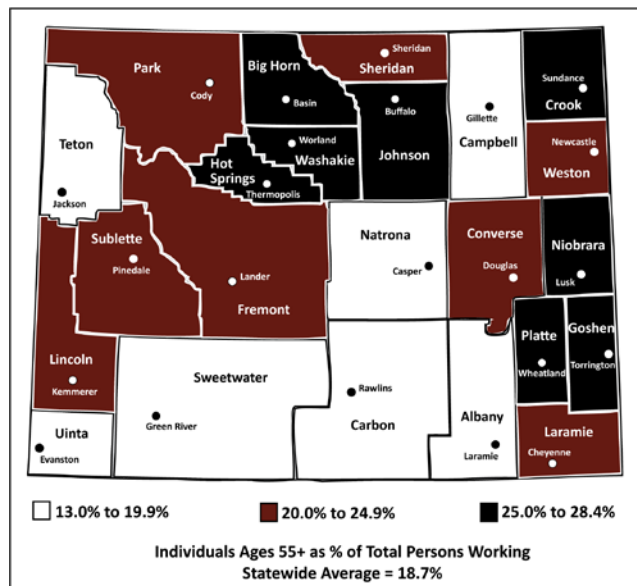


Labor Market Information 101

Workforce Information Programs

Demographics of the Workforce

Persons 55+ As Percentage of All Persons Working by County





Labor Market Information 101

Workforce Information Programs

Growing and Declining Industries Report

https://doe.state.wy.us/LMI/G_DInd/G_D_Industries.htm

- Published quarterly
- Based on QCEW data
- Industries with employment of at least 100
 - 5.0% change in employment
 - Two consecutive quarters



Labor Market Information 101

Workforce Information Programs

Growing and Declining Industries Report

Growing and Declining Industries for 2024Q4

Six growing industries:

- Amusements, gambling, & recreation
- Electrical equipment & appliance manufacturing

10 declining industries:

- Support activities for mining
- Clothing, clothing accessories, shoe, & jewelry retailers

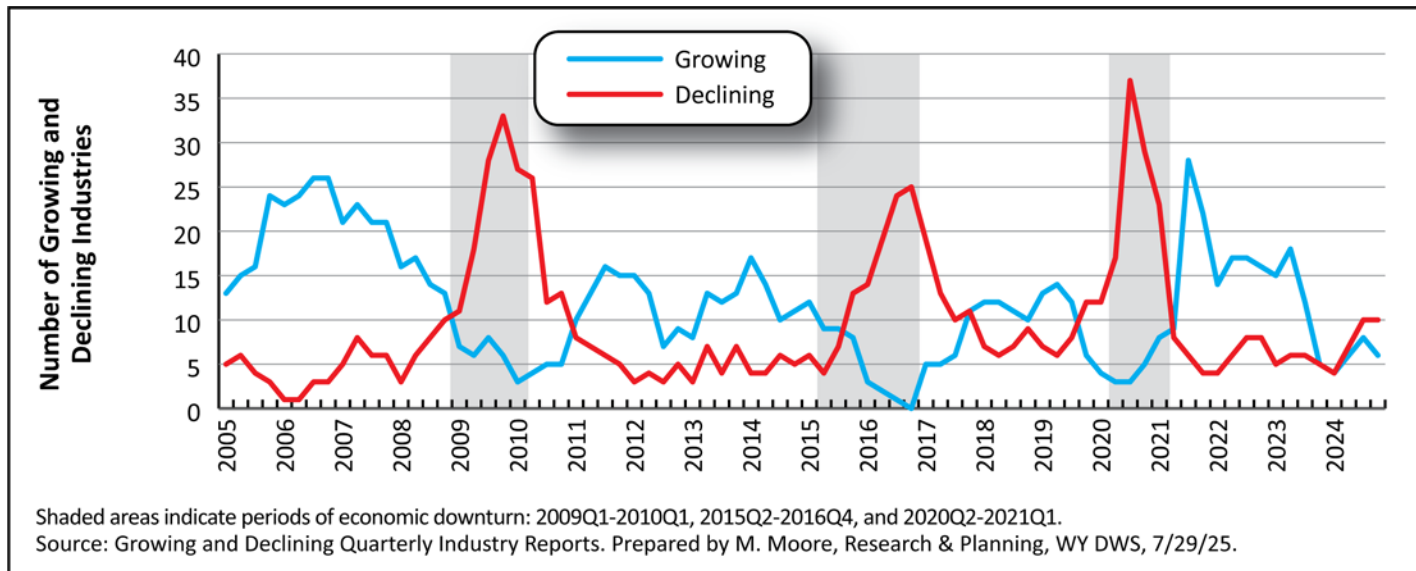


Labor Market Information 101

Workforce Information Programs

Growing and Declining Industries

Total Number of Growing and Declining Industries in WY, 2005Q1-2024Q4



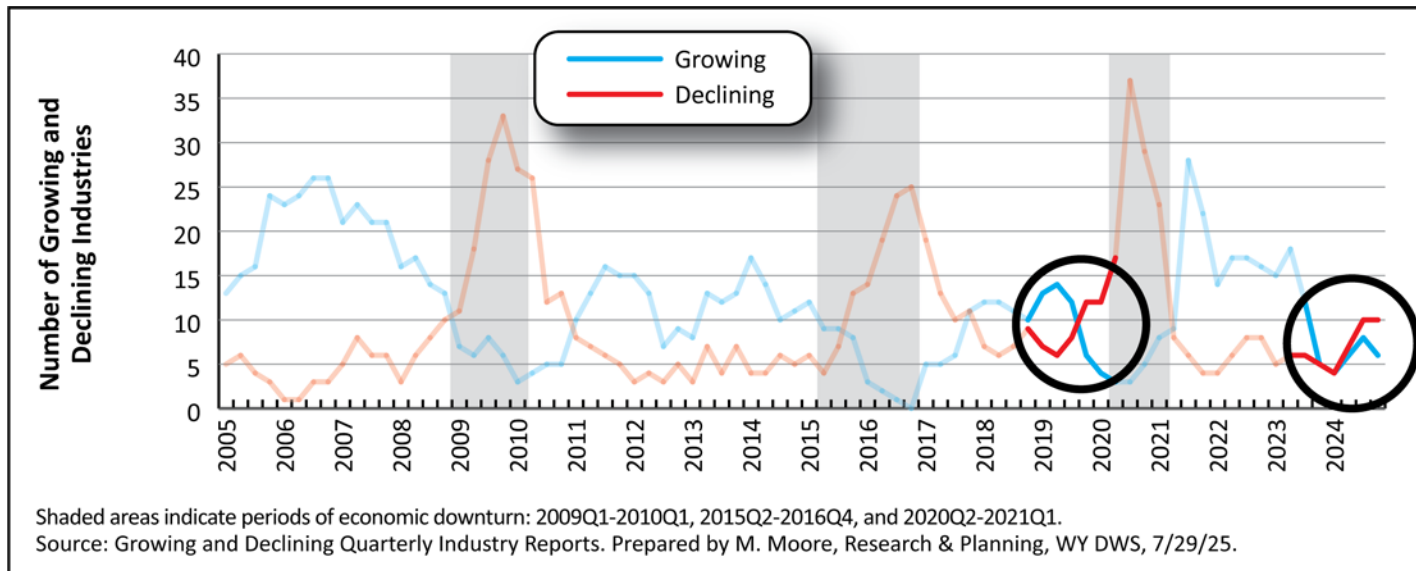


Labor Market Information 101

Workforce Information Programs

Growing and Declining Industries

Total Number of Growing and Declining Industries in WY, 2005Q1-2024Q4



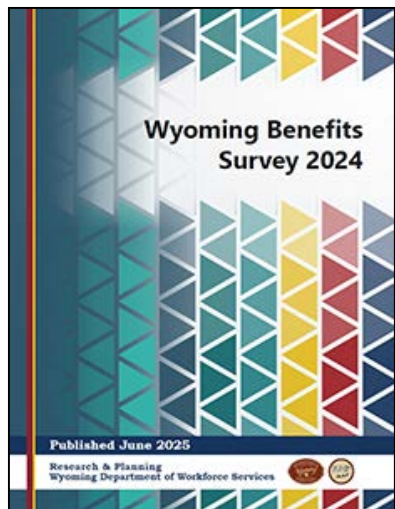


Labor Market Information 101

Workforce Information Programs

Wyoming Benefits Survey 2024

<https://doe.state.wy.us/LMI/benefits.htm>



- Data collected quarterly
 - Published annually
- Employers offering and employees offered benefits such as medical insurance, paid leave, retirement plan, etc.
 - Industry and sub-state region

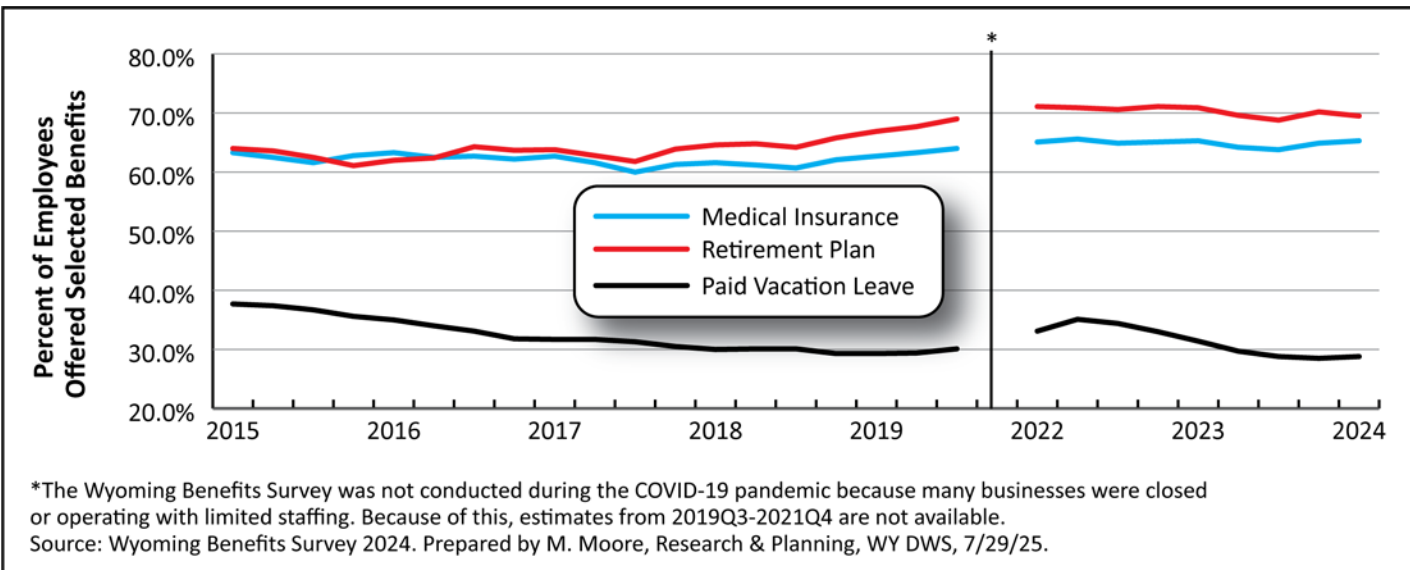


Labor Market Information 101

Workforce Information Programs

Wyoming Benefits Survey 2024

Percent of Employees Offered Selected Benefits, 2015-2024





Labor Market Information 101

Workforce Information Programs

Directory of Licensed Occupations in Wyoming

https://doe.state.wy.us/LMI/licensed_occupations.htm

**2023 Directory
of Licensed
Occupations in
Wyoming**



- Updated every two years
- Nearly 100 occupations require license
- Includes info requirements, fees, Wyoming programs, and more



Labor Market Information 101

Workforce Information Programs

Quarterly Turnover Data

<https://doe.state.wy.us/LMI/turnover.htm>

Turnover:

- Hires
- Exits
- Both hires and exits
- Continuous employment
- 2024Q4 turnover rate: 28.7%

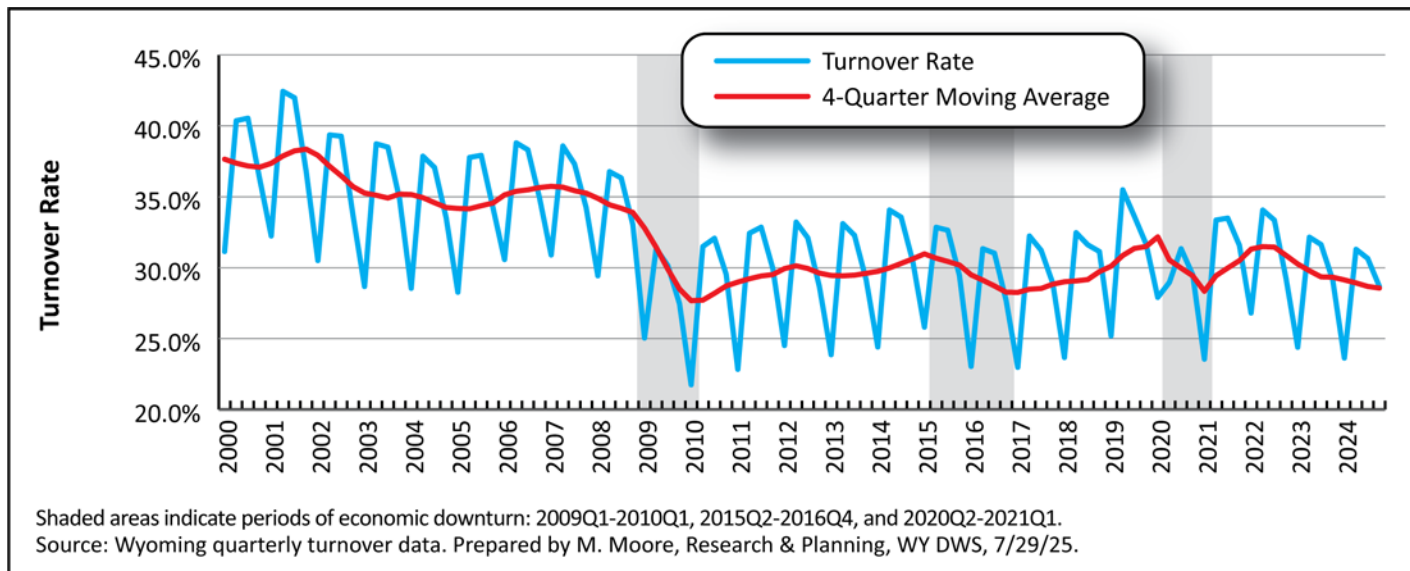


Labor Market Information 101

Workforce Information Programs

Quarterly Turnover Data

Wyoming Turnover Rate, 2000Q1-2024Q4





Labor Market Information 101

Workforce Information Programs

Presentations

<https://doe.state.wy.us/LMI/presentations.htm>

- Wyoming Workforce Development Council
 - DWS virtual training series
 - DWS workforce center staff
- Wyoming Auto Dealer Association
 - Legislative committees



Labor Market Information 101

Workforce Information Programs

Other Recent Research

- STEM occupations in Wyoming
- Youth leaving Wyoming's workforce
- How Covid-19 affected Wyoming
 - Wyoming entrepreneurship



LMI for Workforce Centers



Workforce Information Programs

Contact Us

Tony Glover, Manager
(307) 473-3801
Tony.Glover@wyo.gov

Michael Moore, Research Supervisor
(307) 473-3814
Michael.Moore@wyo.gov

Carola Cowan, BLS Programs
Supervisor
(307) 473-3804
Carola.Cowan@wyo.gov

David Bullard, Senior Economist
(307) 473-3810
David.Bullard@wyo.gov

