

Wyoming Growing and Declining Industries Report

Third Quarter 2025

Prepared by: Laura Yetter, Senior Economist, and Michael Moore, Research Supervisor
Research & Planning, Wyoming Department of Workforce Services

Published May 13, 2026



Wyoming Growing and Declining Industries Report, Third Quarter 2025

Wyoming Department of Workforce Services
Elizabeth Gagen, Director

Research & Planning

Tony Glover, Manager

Carola Cowan, Bureau of Labor Statistics Programs Supervisor
Michael Moore, Research Supervisor

Prepared by:

Laura Yetter, Senior Economist
Michael Moore, Research Supervisor

Editorial Committee:

David Bullard, Jaime Cruz, Matthew Halama, Lisa Knapp, Chris McGrath, Michael Moore, and Laura Yetter

Published May 13, 2026.

©2026 by the Wyoming Department of Workforce Services, Research & Planning

Department of Workforce Services Nondiscrimination Statement

The Department of Workforce Services does not discriminate on the basis of race, color, religion, national origin, sex, age, or disability. It is our intention that all individuals seeking services from our agency be given equal opportunity and that eligibility decisions be based upon applicable statutes, rules, and regulations.

Research & Planning

P.O. Box 2760
Casper, WY 82602
Phone: (307) 473-3807
Fax: (307) 473-3834

R&P Website: <https://doe.state.wy.us/LMI/>

Growing and Declining Industries: https://doe.state.wy.us/LMI/G_DInd/G_D_Industries.htm

URL for this report: https://doe.state.wy.us/LMI/G_DInd/Report_25Q3.pdf

“Your Source for Wyoming Labor Market Information”

Who We Are

Research & Planning (R&P) functions as an exclusively statistical entity within the Wyoming Department of Workforce Services. R&P collects, analyzes, and publishes timely and accurate labor market information (LMI) meeting established statistical standards. We work to make the labor market more efficient by providing the public and the public’s representatives with the information needed for evidence-based, informed decision making.



Wyoming Growing and Declining Industries Report, 2025Q3

by: *Laura Yetter, Senior Economist*

In third quarter 2025 (2025Q3), Wyoming had eight growing industries and six declining industries. This marked the third consecutive quarter that Wyoming had more growing industries than declining.

The Research & Planning (R&P) section of the Wyoming Department of Workforce Services has defined *growing* or *declining* industry as an industry's employment level increasing or decreasing for two consecutive quarters by 5% or more compared to the prior the year. For example, all industries that grew or declined in employment by at least 5% from 2024Q2 to 2025Q2 and subsequently from 2024Q3 to 2025Q3 were included in the respective tables in this report. Additionally, only subsectors with employment sizes of 100 or more are included in these tables. Consequently, while employment in other industries may meet the growth criteria, that growth is taking place in industries with employment of less than 100.

Industries are defined by the North American Industry Classification System (NAICS). For this research, growing and declining industries were determined at the three-digit subsector level. For more information on NAICS, please see <https://www.census.gov/naics/>.

This research was prepared using data from the Quarterly Census of Employment and Wages (QCEW). Growing and declining industry data are updated every quarter when new QCEW data become available.

Wyoming had eight growing industries in 2025Q3, equal to the prior two quarters (see Figure 1, page 4). Three of the fastest

Growing and Declining Industries

Historical growing and declining industry data for Wyoming are now available online at

https://doe.state.wy.us/LMI/G_DInd/G_D_Industries.htm

growing industries were found within transportation & warehousing (NAICS 48-49). Support activities for transportation (NAICS 488) grew the most with 287 (15.3%) jobs over-the-year 2025Q3 and 189 jobs (10.6%) over the year 2025Q2 (see Table 1, page 5). On average, this subsector added 238 jobs per quarter, with an average increase of 12.9%. Other growing industries included warehousing & storage (165, or 9.1%), pipeline transportation (178, or 21.6%), and food manufacturing (83, or 10.7%). Six of these eight growing industries are the same as the 2025Q2 report.

Wyoming's eight growing industries in 2025Q3 accounted for 9.9% of all industries and 2.8% of the state's total employment (see Table 3 and Figure 2, page 7).

The declining industries table (see Table 2, page 6) reads the same way, except with negative changes, and therefore, declining industries. There were six declining industries in 2025Q3, two more than the prior quarter (see Figure 1, page 4). Declining industries for 2025Q3 included sporting goods, hobby, musical instruments, books, and miscellaneous retailers (-171 jobs, or -5.5%); machinery manufacturing (-76, or -10.7%); and beverage & tobacco product manufacturing (-39, or -6.7%).

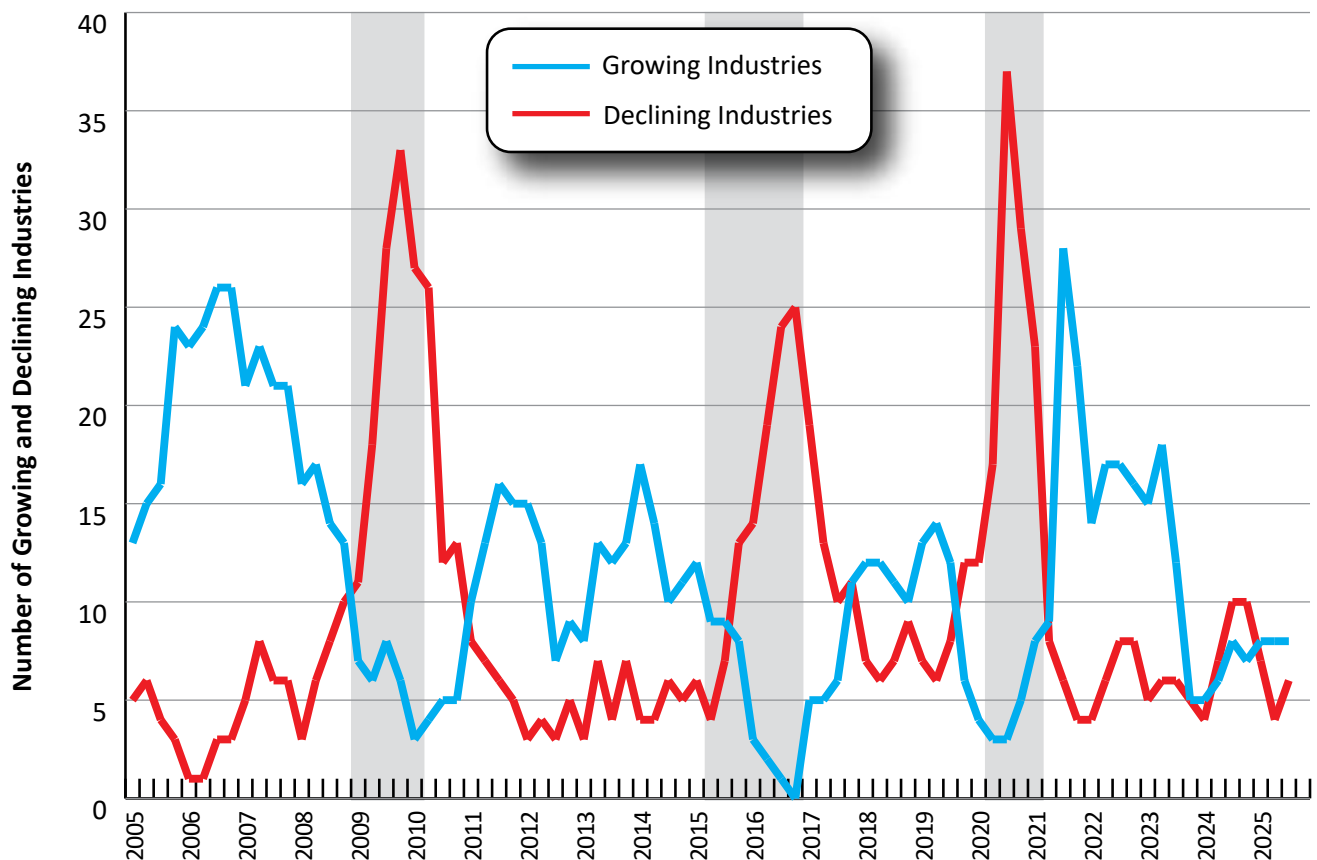
Wyoming’s six declining industries made up 7.4% of all industries and 1.7% of the state's total employment in 2025Q3.

The *average weekly wage* is calculated by dividing total wages for a particular subsector by the total number of jobs and the number of weeks in the observed quarter. In 2025Q3, the average weekly wage was \$1,407 for growing industries and \$792 for declining industries (see Table 3 and Figure 3, page 7). Overall, the state's average weekly wage for 2025Q3 was \$1,201.

During periods of economic expansion,

the number of growing industries is much greater than the number of declining industries (see Figure 1). For example, the number of growing industries in Wyoming peaked at 26 in 2006Q3 and 2006Q4, compared to three and five declining industries, respectively.

But during economic downturns, there are far more declining industries than growing industries. R&P has defined an *economic downturn* as a period of at least two consecutive quarters of over-the-year decrease in average monthly employment and total wages based on data from the



Shaded areas indicate periods of economic downturn: 2009Q1-2010Q1, 2015Q2-2016Q4, and 2020Q2-2021Q1. Source: Growing and Declining Quarterly Industry Reports, based on data from the Quarterly Census of Employment and Wages. Prepared by M. Moore, Research & Planning, WY DWS, 4/24/26.

Figure 1: Number of Growing and Declining Industries in Wyoming by Year and Quarter, 2005Q1-2025Q3

QCEW. Over the last 20 years, Wyoming has experienced three periods of economic downturn: 2009Q1-2010Q1, 2015Q2-2016Q4, and 2020Q2-2021Q1. During the most recent

economic downturn, which was driven by the COVID-19 pandemic and declining energy prices, Wyoming had 37 declining industries in 2020Q3 compared to just three growing.

Table 1: Growing Industries Report for Wyoming, Third Quarter 2025^a

Subsector ^a (3-Digit NAICS ^b)	Sector (2-Digit NAICS)	Employment (Current Quarter)				Employment (Prior Quarter)				Growing Industries		
		2025Q3	2024Q3	Over-the-Year Change		2025Q2	2024Q2	Over-the-Year Change		Average Change		Average Weekly Wage
				N	%			N	%	N	% ^c	
Food Manufacturing (311)	Manufacturing (31-33)	903	819	84	10.3	814	733	81	11.1	83	10.7	\$750
Primary Metal Manufacturing (331)	Manufacturing (31-33)	159	113	46	40.7	152	122	30	24.6	38	32.6	\$1,555
Computer & Electronic Product Mfg. (334)	Manufacturing (31-33)	410	361	49	13.6	414	359	55	15.3	52	14.4	\$1,335
Air Transportation (481)	Transportation & Warehousing (48-49)	434	413	21	5.1	432	407	25	6.1	23	5.6	\$1,543
Pipeline Transportation (486)	Transportation & Warehousing (48-49)	1,005	827	178	21.5	1,002	824	178	21.6	178	21.6	\$2,234
Support Activities For Transportation (488)	Transportation & Warehousing (48-49)	2,159	1,872	287	15.3	1,979	1,790	189	10.6	238	12.9	\$1,715
Warehousing & Storage (493)	Transportation & Warehousing (48-49)	1,978	1,798	180	10.0	1,961	1,811	150	8.3	165	9.1	\$1,029
Waste Management & Remediation Services (562)	Admin. & Waste Services (56)	942	870	72	8.3	912	840	72	8.6	72	8.4	\$1,182
Total	Total	7,989	7,070	919	13.0	7,663	6,883	780	11.3	850	12.2	\$1,407

^aIncludes both public & privately owned firms.

^bNorth American Industry Classification System.

^cThe percentage for average change is the employment-weighted average percentage change of the current & prior quarters (employment change current quarter + employment change prior quarter) divided by the employment for the current & prior quarters (employment current quarter + employment prior quarter).

Source: Quarterly Census of Employment & Wages.

The average weekly wage is calculated by dividing the total wage for the industry group by the total number of jobs for the industry group & the number of weeks in the observed quarter. Please be aware that average weekly wages at the industry group level are susceptible to wage bias due to sample size, occupational distributions, seasonal pay & bonuses, & keying error.

Prepared by L. Yetter, Research & Planning, WY DWS, 4/24/26.

Table 2: Declining Industries Report for Wyoming, Third Quarter 2025^a

Subsector ^a (3-Digit NAICS ^b)	Sector (2-Digit NAICS)	Employment (Current Quarter)				Employment (Prior Quarter)				Declining Industries		
		2025Q3	2024Q3	Over-the-Year Change		2025Q2	2024Q2	Over-the-Year Change		Average Change		Average Weekly Wage
				N	%			N	%	N	% ^c	
Beverage & Tobacco Product Manufacturing (312)	Manufac- turing (31- 33)	550	593	-43	-7.3	529	564	-35	-6.2	-39	-6.7	\$1,004
Textile Product Mills (314)	Manufac- turing (31- 33)	154	184	-30	-16.3	158	170	-12	-7.1	-21	-11.7	\$983
Machinery Mfg. (333)	Manufac- turing (31- 33)	622	674	-52	-7.7	620	719	-99	-13.8	-76	-10.7	\$1,351
Sporting Goods, Hobby, Musical Instrument, Book, & Miscellaneous Retailers (459)	Retail Trade (44-45)	2,964	3,128	-164	-5.2	2,883	3,061	-178	-5.8	-171	-5.5	\$592
Internet Publishing & Broadcasting (516)	Information (51)	296	314	-18	-5.7	296	323	-27	-8.4	-23	-7.0	\$987
Private Households (814)	Other Services, Except Public Admin. (81)	200	235	-35	-14.9	198	239	-41	-17.2	-38	-16.0	\$1,001
Total	Total	4,784	5,127	-343	-6.7	4,682	5,074	-392	-7.7	-368	-7.2	\$792

^aIncludes both public & privately owned firms.

^bNorth American Industry Classification System.

^cThe percentage for average change is the employment-weighted average percentage change of the current & prior quarters (employment change current quarter + employment change prior quarter) divided by the employment for the current & prior quarters (employment current quarter + employment prior quarter).

Source: Quarterly Census of Employment & Wages.

The average weekly wage is calculated by dividing the total wage for the industry group by the total number of jobs for the industry group & the number of weeks in the observed quarter. Please be aware that average weekly wages at the industry group level are susceptible to wage bias due to sample size, occupational distributions, seasonal pay & bonuses, & keying error.

Prepared by L. Yetter, Research & Planning, WY DWS, 4/24/26.

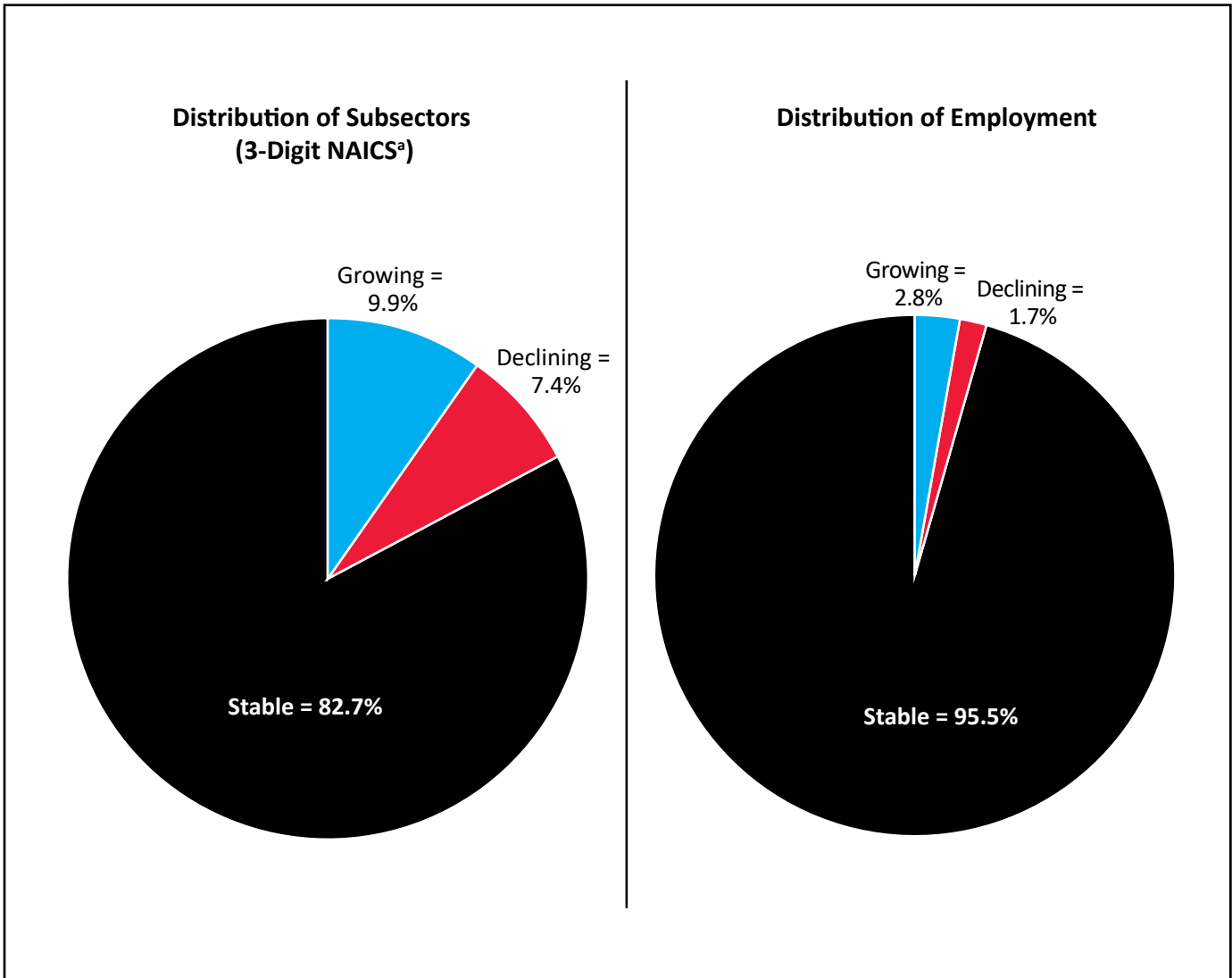
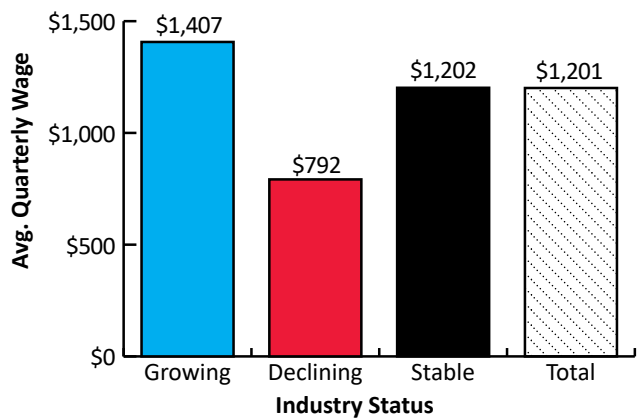


Figure 2: Distribution of Growing and Declining Industries (NAICS 3-Digit Subsector) in Wyoming, 2025Q3

Table 3: Distribution of Sectors and Employment by Growing/Declining Status in Wyoming, 2025Q3

Status	Subsectors (3-Digit NAICS)		Employment		Average Weekly Wage
	N	%	N	%	
Growing	8	9.9	7,990	2.8	\$1,407
Declining	6	7.4	4,786	1.7	\$792
Stable	67	82.7	275,122	95.6	\$1,202
Total	81	100.0	287,898	100.0	\$1,201

Source: Quarterly Census of Employment and Wages. Prepared by L. Yetter, Research & Planning, WY DWS, 4/24/26.



Source: Quarterly Census of Employment and Wages. Prepared by L. Yetter, Research & Planning, WY DWS, 4/24/26.

Figure 3: Average Weekly Wage of Growing and Declining Industries in Wyoming, 2025Q3

This publication was produced by the Research & Planning section of the Wyoming Department of Workforce Services.

**Research & Planning
P.O. Box 2760
Casper, WY 82602
Phone: (307) 473-3807
Fax: (307) 473-3834
Website: <https://doe.state.wy.us/LMI>
Email: dws-researchplanning@wyo.gov**

Material contained in this publication is in the public domain
and may be reproduced without special permission provided that source credit is given to:

Wyoming Growing and Declining Industries Report, Third Quarter 2025, Wyoming Department of Workforce Services, Research & Planning

This workforce product was funded by a grant awarded by the U.S. Department of Labor's Employment and Training Administration. The product was created by the recipient and does not necessarily reflect the official position of the U.S. Department of Labor. The U.S. Department of Labor makes no guarantees, warranties, or assurances of any kind, express or implied, with respect to such information, including any information on linked sites and including, but not limited to, accuracy of the information or its completeness, timeliness, usefulness, adequacy, continued availability, or ownership. This product is copyrighted by the institution that created it. Internal use by an organization and/or personal use by an individual for non-commercial purposes is permissible. All other uses require the prior authorization of the copyright owner.