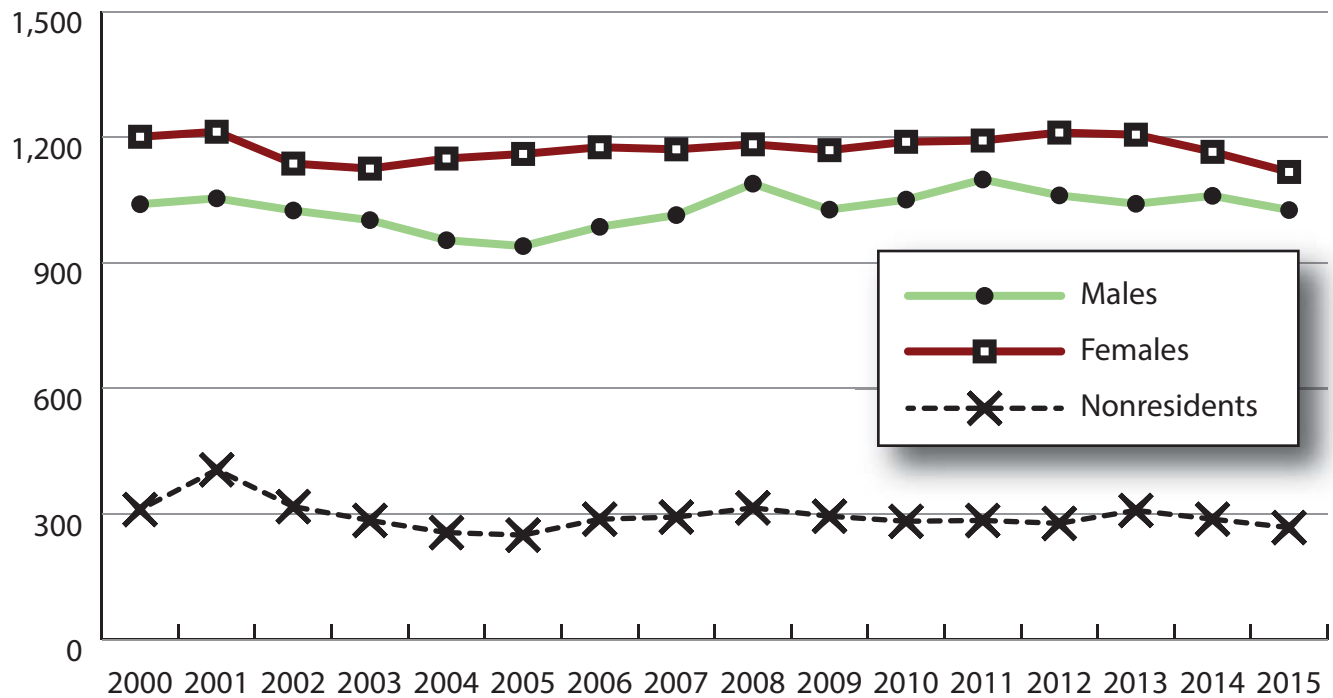
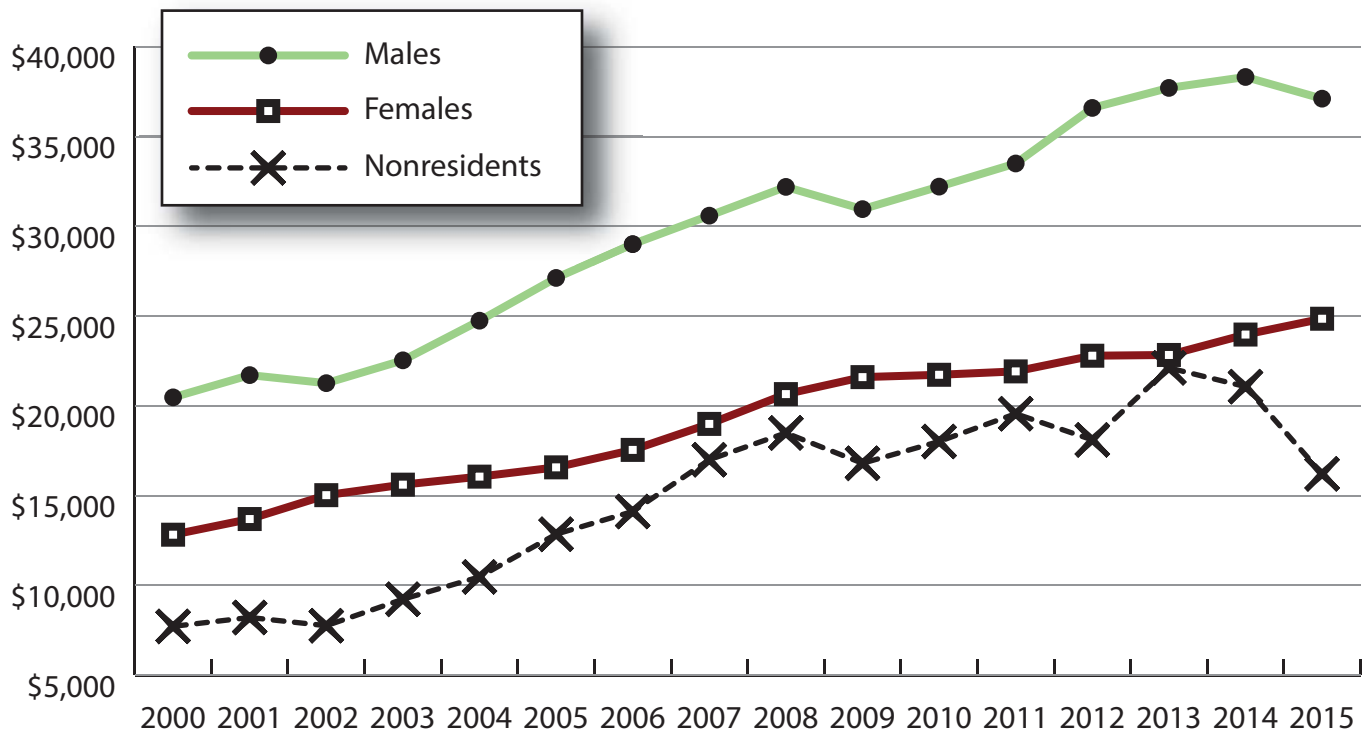


Wage Records in Wyoming: Employment and Earnings by Age and Gender with Place of Work in Hot Springs County, 2000-2015

Total Number of Persons Working in Hot Springs County at Any Time by Gender, 2000-2015



Average Annual Earnings for Persons Working in Hot Springs County at Any Time by Gender, 2000-2015



Wage Records in Wyoming: Employment and Earnings by Age and Gender with Place of Work in Hot Springs County, 2000-2015

Average Earnings by Age and Gender with Place of Work in Hot Springs County in 2000

Gender	Age Group	Number	Age Percent	Gender Percent	Average Annual Wage	Average Quarters Worked	Average Annual Employers
Women	00-19	171	14.2	0.0	\$2,428	2.6	1.6
Women	20-24	98	8.2	0.0	\$5,965	2.9	2.1
Women	25-34	181	15.1	0.0	\$12,503	3.3	1.7
Women	35-44	275	22.9	0.0	\$15,142	3.5	1.5
Women	45-54	269	22.4	0.0	\$19,303	3.5	1.4
Women	55-64	155	12.9	0.0	\$15,501	3.4	1.3
Women	65-Up	52	4.3	0.0	\$7,234	3.0	1.1
Women	Total	1,201	100.0	47.1	\$12,821	3.3	1.5
Men	00-19	161	15.5	0.0	\$2,009	2.3	1.4
Men	20-24	99	9.5	0.0	\$8,412	2.7	1.7
Men	25-34	152	14.6	0.0	\$19,064	3.2	1.5
Men	35-44	226	21.7	0.0	\$27,339	3.5	1.3
Men	45-54	213	20.5	0.0	\$29,801	3.5	1.3
Men	55-64	134	12.9	0.0	\$27,950	3.4	1.2
Men	65-Up	53	5.1	0.0	\$18,069	3.0	1.1
Men	N/A	2	0.2	0.0	\$3,660	1.0	1.0
Men	Total	1,040	100.0	40.8	\$20,472	3.2	1.4
N/A	N/A	311	100.0	0.0	\$7,715	2.3	1.4
N/A	Total	311	100.0	12.2	\$7,715	2.3	1.4
Total	00-19	332	13.0	0.0	\$2,225	2.5	1.5
Total	20-24	197	7.7	0.0	\$7,195	2.8	1.9
Total	25-34	333	13.0	0.0	\$15,498	3.3	1.6
Total	35-44	501	19.6	0.0	\$20,644	3.5	1.4
Total	45-54	482	18.9	0.0	\$23,942	3.5	1.4
Total	55-64	289	11.3	0.0	\$21,273	3.4	1.2
Total	65-Up	105	4.1	0.0	\$12,703	3.0	1.1
Total	N/A	313	12.3	0.0	\$7,689	2.2	1.4
Total	Total	2,552	100.0	100.0	\$15,317	3.1	1.4

Note: Persons worked at any time during the year.

County Determination: Based on county of employment in which the person made the most money in the year.

N/A: Represents persons with demographic data that is unavailable.

Wage Records in Wyoming: Employment and Earnings by Age and Gender with Place of Work in Hot Springs County, 2000-2015

Average Earnings by Age and Gender with Place of Work in Hot Springs County in 2001

Gender	Age Group	Number	Age Percent	Gender Percent	Average Annual Wage	Average Quarters Worked	Average Annual Employers
Women	00-19	158	13.0	0.0	\$2,522	2.7	1.6
Women	20-24	113	9.3	0.0	\$6,192	2.8	2.1
Women	25-34	183	15.1	0.0	\$13,635	3.2	1.7
Women	35-44	264	21.8	0.0	\$15,364	3.4	1.5
Women	45-54	283	23.3	0.0	\$21,094	3.6	1.4
Women	55-64	159	13.1	0.0	\$14,987	3.4	1.4
Women	65-Up	52	4.3	0.0	\$11,614	2.9	1.1
Women	N/A	1	0.1	0.0	\$4,618	1.0	1.0
Women	Total	1,213	100.0	45.4	\$13,694	3.2	1.5
Men	00-19	167	15.8	0.0	\$2,717	2.5	1.5
Men	20-24	89	8.4	0.0	\$9,719	2.8	1.8
Men	25-34	178	16.9	0.0	\$19,693	3.1	1.5
Men	35-44	206	19.5	0.0	\$28,365	3.4	1.4
Men	45-54	221	21.0	0.0	\$30,920	3.4	1.4
Men	55-64	138	13.1	0.0	\$31,461	3.3	1.2
Men	65-Up	55	5.2	0.0	\$18,955	2.9	1.2
Men	Total	1,054	100.0	39.4	\$21,712	3.1	1.4
N/A	N/A	406	100.0	0.0	\$8,210	1.9	1.3
N/A	Total	406	100.0	15.2	\$8,210	1.9	1.3
Total	00-19	325	12.2	0.0	\$2,622	2.6	1.5
Total	20-24	202	7.6	0.0	\$7,746	2.8	2.0
Total	25-34	361	13.5	0.0	\$16,622	3.2	1.6
Total	35-44	470	17.6	0.0	\$21,062	3.4	1.5
Total	45-54	504	18.9	0.0	\$25,403	3.5	1.4
Total	55-64	297	11.1	0.0	\$22,641	3.4	1.3
Total	65-Up	107	4.0	0.0	\$15,387	2.9	1.1
Total	N/A	407	15.2	0.0	\$8,201	1.9	1.3
Total	Total	2,673	100.0	100.0	\$16,023	3.0	1.5

Note: Persons worked at any time during the year.

County Determination: Based on county of employment in which the person made the most money in the year.

N/A: Represents persons with demographic data that is unavailable.

Wage Records in Wyoming: Employment and Earnings by Age and Gender with Place of Work in Hot Springs County, 2000-2015

Average Earnings by Age and Gender with Place of Work in Hot Springs County in 2002

Gender	Age Group	Number	Age Percent	Gender Percent	Average Annual Wage	Average Quarters Worked	Average Annual Employers
Women	00-19	145	12.8	0.0	\$3,190	2.8	1.7
Women	20-24	95	8.4	0.0	\$7,123	2.9	1.7
Women	25-34	177	15.6	0.0	\$14,688	3.3	1.6
Women	35-44	223	19.6	0.0	\$18,178	3.6	1.3
Women	45-54	279	24.5	0.0	\$21,268	3.5	1.4
Women	55-64	169	14.9	0.0	\$16,854	3.4	1.2
Women	65-Up	49	4.3	0.0	\$10,363	2.9	1.0
Women	Total	1,137	100.0	45.8	\$15,024	3.3	1.4
Men	00-19	152	14.8	0.0	\$2,873	2.8	1.5
Men	20-24	98	9.6	0.0	\$8,458	2.7	1.7
Men	25-34	166	16.2	0.0	\$19,002	3.1	1.4
Men	35-44	207	20.2	0.0	\$29,400	3.4	1.3
Men	45-54	208	20.3	0.0	\$30,443	3.5	1.2
Men	55-64	137	13.4	0.0	\$30,079	3.3	1.2
Men	65-Up	57	5.6	0.0	\$14,663	3.1	1.1
Men	Total	1,025	100.0	41.3	\$21,263	3.2	1.3
N/A	N/A	318	100.0	0.0	\$7,752	2.1	1.3
N/A	Total	318	100.0	12.8	\$7,752	2.1	1.3
Total	00-19	297	12.0	0.0	\$3,028	2.8	1.6
Total	20-24	193	7.8	0.0	\$7,801	2.8	1.7
Total	25-34	343	13.8	0.0	\$16,776	3.2	1.5
Total	35-44	430	17.3	0.0	\$23,580	3.5	1.3
Total	45-54	487	19.6	0.0	\$25,187	3.5	1.3
Total	55-64	306	12.3	0.0	\$22,775	3.4	1.2
Total	65-Up	106	4.3	0.0	\$12,675	3.0	1.1
Total	N/A	318	12.8	0.0	\$7,752	2.1	1.3
Total	Total	2,480	100.0	100.0	\$16,670	3.1	1.4

Note: Persons worked at any time during the year.

County Determination: Based on county of employment in which the person made the most money in the year.

N/A: Represents persons with demographic data that is unavailable.

Wage Records in Wyoming: Employment and Earnings by Age and Gender with Place of Work in Hot Springs County, 2000-2015

Average Earnings by Age and Gender with Place of Work in Hot Springs County in 2003

Gender	Age Group	Number	Age Percent	Gender Percent	Average Annual Wage	Average Quarters Worked	Average Annual Employers
Women	00-19	135	12.0	0.0	\$2,748	2.8	1.7
Women	20-24	101	9.0	0.0	\$7,936	3.0	1.9
Women	25-34	164	14.6	0.0	\$14,892	3.4	1.7
Women	35-44	219	19.5	0.0	\$18,487	3.6	1.4
Women	45-54	274	24.4	0.0	\$22,427	3.6	1.3
Women	55-64	183	16.3	0.0	\$17,067	3.4	1.2
Women	65-Up	49	4.4	0.0	\$12,813	3.2	1.1
Women	Total	1,125	100.0	46.6	\$15,609	3.4	1.5
Men	00-19	153	15.3	0.0	\$2,758	2.7	1.6
Men	20-24	100	10.0	0.0	\$9,694	3.0	2.0
Men	25-34	148	14.8	0.0	\$21,915	3.2	1.5
Men	35-44	193	19.3	0.0	\$29,081	3.4	1.4
Men	45-54	205	20.5	0.0	\$34,555	3.5	1.3
Men	55-64	145	14.5	0.0	\$30,177	3.5	1.2
Men	65-Up	58	5.8	0.0	\$15,055	3.2	1.3
Men	Total	1,002	100.0	41.5	\$22,535	3.3	1.4
N/A	N/A	285	100.0	0.0	\$9,227	2.2	1.3
N/A	Total	285	100.0	11.8	\$9,227	2.2	1.3
Total	00-19	288	11.9	0.0	\$2,753	2.8	1.6
Total	20-24	201	8.3	0.0	\$8,811	3.0	1.9
Total	25-34	312	12.9	0.0	\$18,224	3.3	1.6
Total	35-44	412	17.1	0.0	\$23,450	3.5	1.4
Total	45-54	479	19.9	0.0	\$27,618	3.6	1.3
Total	55-64	328	13.6	0.0	\$22,863	3.4	1.2
Total	65-Up	107	4.4	0.0	\$14,028	3.2	1.2
Total	N/A	285	11.8	0.0	\$9,227	2.2	1.3
Total	Total	2,412	100.0	100.0	\$17,732	3.2	1.4

Note: Persons worked at any time during the year.

County Determination: Based on county of employment in which the person made the most money in the year.

N/A: Represents persons with demographic data that is unavailable.

Wage Records in Wyoming: Employment and Earnings by Age and Gender with Place of Work in Hot Springs County, 2000-2015

Average Earnings by Age and Gender with Place of Work in Hot Springs County in 2004

Gender	Age Group	Number	Age Percent	Gender Percent	Average Annual Wage	Average Quarters Worked	Average Annual Employers
Women	00-19	145	12.6	0.0	\$2,666	2.7	1.6
Women	20-24	108	9.4	0.0	\$7,464	3.0	1.9
Women	25-34	162	14.1	0.0	\$14,224	3.3	1.7
Women	35-44	210	18.3	0.0	\$18,656	3.5	1.5
Women	45-54	284	24.7	0.0	\$24,547	3.7	1.3
Women	55-64	172	15.0	0.0	\$18,450	3.6	1.3
Women	65-Up	67	5.8	0.0	\$13,183	3.1	1.1
Women	N/A	1	0.1	0.0	\$6,000	1.0	1.0
Women	Total	1,149	100.0	48.7	\$16,056	3.4	1.4
Men	00-19	136	14.3	0.0	\$3,134	2.7	1.6
Men	20-24	105	11.0	0.0	\$12,200	2.9	1.9
Men	25-34	143	15.0	0.0	\$19,801	3.2	1.7
Men	35-44	154	16.1	0.0	\$35,355	3.6	1.3
Men	45-54	197	20.6	0.0	\$39,629	3.6	1.2
Men	55-64	154	16.1	0.0	\$29,049	3.6	1.2
Men	65-Up	65	6.8	0.0	\$20,638	2.9	1.2
Men	Total	954	100.0	40.4	\$24,743	3.3	1.4
N/A	N/A	256	100.0	0.0	\$10,470	2.5	1.4
N/A	Total	256	100.0	10.9	\$10,470	2.5	1.4
Total	00-19	281	11.9	0.0	\$2,893	2.7	1.6
Total	20-24	213	9.0	0.0	\$9,799	3.0	1.9
Total	25-34	305	12.9	0.0	\$16,838	3.2	1.7
Total	35-44	364	15.4	0.0	\$25,721	3.6	1.4
Total	45-54	481	20.4	0.0	\$30,724	3.7	1.3
Total	55-64	326	13.8	0.0	\$23,457	3.6	1.3
Total	65-Up	132	5.6	0.0	\$16,854	3.0	1.1
Total	N/A	257	10.9	0.0	\$10,452	2.5	1.4
Total	Total	2,359	100.0	100.0	\$18,963	3.2	1.4

Note: Persons worked at any time during the year.

County Determination: Based on county of employment in which the person made the most money in the year.

N/A: Represents persons with demographic data that is unavailable.

Wage Records in Wyoming: Employment and Earnings by Age and Gender with Place of Work in Hot Springs County, 2000-2015

Average Earnings by Age and Gender with Place of Work in Hot Springs County in 2005

Gender	Age Group	Number	Age Percent	Gender Percent	Average Annual Wage	Average Quarters Worked	Average Annual Employers
Women	00-19	141	12.2	0.0	\$3,217	2.8	1.6
Women	20-24	101	8.7	0.0	\$7,965	2.9	1.9
Women	25-34	166	14.3	0.0	\$16,023	3.4	1.7
Women	35-44	193	16.6	0.0	\$19,467	3.5	1.4
Women	45-54	293	25.3	0.0	\$23,386	3.6	1.4
Women	55-64	197	17.0	0.0	\$20,416	3.6	1.3
Women	65-Up	69	5.9	0.0	\$9,794	3.4	1.1
Women	Total	1,160	100.0	49.4	\$16,573	3.4	1.5
Men	00-19	118	12.6	0.0	\$3,738	2.7	1.6
Men	20-24	113	12.0	0.0	\$16,029	3.2	1.8
Men	25-34	134	14.3	0.0	\$23,678	3.4	1.7
Men	35-44	164	17.4	0.0	\$38,296	3.7	1.5
Men	45-54	200	21.3	0.0	\$38,751	3.7	1.3
Men	55-64	157	16.7	0.0	\$32,592	3.5	1.3
Men	65-Up	54	5.7	0.0	\$17,129	3.4	1.1
Men	Total	940	100.0	40.0	\$27,125	3.4	1.5
N/A	N/A	250	100.0	0.0	\$12,848	2.8	1.4
N/A	Total	250	100.0	10.6	\$12,848	2.8	1.4
Total	00-19	259	11.0	0.0	\$3,454	2.7	1.6
Total	20-24	214	9.1	0.0	\$12,223	3.1	1.8
Total	25-34	300	12.8	0.0	\$19,442	3.4	1.7
Total	35-44	357	15.2	0.0	\$28,117	3.6	1.5
Total	45-54	493	21.0	0.0	\$29,619	3.6	1.4
Total	55-64	354	15.1	0.0	\$25,816	3.5	1.3
Total	65-Up	123	5.2	0.0	\$13,014	3.4	1.1
Total	N/A	250	10.6	0.0	\$12,848	2.8	1.4
Total	Total	2,350	100.0	100.0	\$20,398	3.3	1.5

Note: Persons worked at any time during the year.

County Determination: Based on county of employment in which the person made the most money in the year.

N/A: Represents persons with demographic data that is unavailable.

Wage Records in Wyoming: Employment and Earnings by Age and Gender with Place of Work in Hot Springs County, 2000-2015

Average Earnings by Age and Gender with Place of Work in Hot Springs County in 2006

Gender	Age Group	Number	Age Percent	Gender Percent	Average Annual Wage	Average Quarters Worked	Average Annual Employers
Women	00-19	127	10.8	0.0	\$2,890	2.7	1.7
Women	20-24	99	8.4	0.0	\$8,543	3.1	2.1
Women	25-34	192	16.3	0.0	\$15,645	3.2	1.7
Women	35-44	189	16.1	0.0	\$20,973	3.6	1.6
Women	45-54	279	23.7	0.0	\$25,649	3.6	1.4
Women	55-64	206	17.5	0.0	\$21,354	3.6	1.3
Women	65-Up	84	7.1	0.0	\$10,681	3.3	1.2
Women	Total	1,176	100.0	48.0	\$17,545	3.4	1.5
Men	00-19	105	10.6	0.0	\$3,381	2.6	1.5
Men	20-24	112	11.4	0.0	\$17,563	3.0	1.6
Men	25-34	168	17.0	0.0	\$28,677	3.4	1.7
Men	35-44	161	16.3	0.0	\$37,247	3.5	1.4
Men	45-54	213	21.6	0.0	\$41,414	3.6	1.2
Men	55-64	162	16.4	0.0	\$34,247	3.5	1.3
Men	65-Up	64	6.5	0.0	\$17,021	3.4	1.2
Men	N/A	1	0.1	0.0	\$6,984	2.0	1.0
Men	Total	986	100.0	40.2	\$29,008	3.4	1.4
N/A	N/A	288	100.0	0.0	\$14,114	2.7	1.4
N/A	Total	288	100.0	11.8	\$14,114	2.7	1.4
Total	00-19	232	9.5	0.0	\$3,113	2.7	1.6
Total	20-24	211	8.6	0.0	\$13,331	3.0	1.8
Total	25-34	360	14.7	0.0	\$21,726	3.3	1.7
Total	35-44	350	14.3	0.0	\$28,459	3.5	1.5
Total	45-54	492	20.1	0.0	\$32,474	3.6	1.3
Total	55-64	368	15.0	0.0	\$27,030	3.5	1.3
Total	65-Up	148	6.0	0.0	\$13,423	3.3	1.2
Total	N/A	289	11.8	0.0	\$14,089	2.7	1.4
Total	Total	2,450	100.0	100.0	\$21,755	3.3	1.5

Note: Persons worked at any time during the year.

County Determination: Based on county of employment in which the person made the most money in the year.

N/A: Represents persons with demographic data that is unavailable.

Wage Records in Wyoming: Employment and Earnings by Age and Gender with Place of Work in Hot Springs County, 2000-2015

Average Earnings by Age and Gender with Place of Work in Hot Springs County in 2007

Gender	Age Group	Number	Age Percent	Gender Percent	Average Annual Wage	Average Quarters Worked	Average Annual Employers
Women	00-19	134	11.4	0.0	\$2,708	2.6	1.7
Women	20-24	97	8.3	0.0	\$11,837	3.2	2.0
Women	25-34	177	15.1	0.0	\$16,306	3.3	1.6
Women	35-44	182	15.5	0.0	\$23,163	3.5	1.5
Women	45-54	279	23.8	0.0	\$27,082	3.6	1.3
Women	55-64	213	18.2	0.0	\$24,167	3.7	1.3
Women	65-Up	88	7.5	0.0	\$10,471	3.4	1.1
Women	N/A	1	0.1	0.0	\$3,716	1.0	1.0
Women	Total	1,171	100.0	47.3	\$18,993	3.4	1.5
Men	00-19	121	11.9	0.0	\$3,866	2.5	1.5
Men	20-24	116	11.4	0.0	\$20,981	3.2	1.9
Men	25-34	166	16.4	0.0	\$31,188	3.4	1.6
Men	35-44	163	16.1	0.0	\$41,043	3.6	1.3
Men	45-54	194	19.1	0.0	\$42,916	3.7	1.3
Men	55-64	176	17.4	0.0	\$36,197	3.5	1.2
Men	65-Up	78	7.7	0.0	\$19,961	3.2	1.2
Men	Total	1,014	100.0	40.9	\$30,594	3.4	1.4
N/A	N/A	293	100.0	0.0	\$16,998	2.7	1.4
N/A	Total	293	100.0	11.8	\$16,998	2.7	1.4
Total	00-19	255	10.3	0.0	\$3,257	2.5	1.6
Total	20-24	213	8.6	0.0	\$16,817	3.2	1.9
Total	25-34	343	13.8	0.0	\$23,508	3.3	1.6
Total	35-44	345	13.9	0.0	\$31,610	3.6	1.4
Total	45-54	473	19.1	0.0	\$33,576	3.6	1.3
Total	55-64	389	15.7	0.0	\$29,610	3.6	1.2
Total	65-Up	166	6.7	0.0	\$14,930	3.3	1.2
Total	N/A	294	11.9	0.0	\$16,953	2.7	1.4
Total	Total	2,478	100.0	100.0	\$23,504	3.3	1.4

Note: Persons worked at any time during the year.

County Determination: Based on county of employment in which the person made the most money in the year.

N/A: Represents persons with demographic data that is unavailable.

Wage Records in Wyoming: Employment and Earnings by Age and Gender with Place of Work in Hot Springs County, 2000-2015

Average Earnings by Age and Gender with Place of Work in Hot Springs County in 2008

Gender	Age Group	Number	Age Percent	Gender Percent	Average Annual Wage	Average Quarters Worked	Average Annual Employers
Women	00-19	113	9.6	0.0	\$3,281	2.7	1.7
Women	20-24	101	8.5	0.0	\$11,611	3.1	1.8
Women	25-34	171	14.5	0.0	\$18,076	3.5	1.8
Women	35-44	198	16.7	0.0	\$26,306	3.6	1.4
Women	45-54	276	23.3	0.0	\$27,535	3.6	1.3
Women	55-64	232	19.6	0.0	\$25,621	3.6	1.3
Women	65-Up	92	7.8	0.0	\$11,381	3.4	1.1
Women	Total	1,183	100.0	45.7	\$20,654	3.4	1.5
Men	00-19	125	11.5	0.0	\$4,240	2.6	1.4
Men	20-24	103	9.5	0.0	\$20,550	3.0	1.9
Men	25-34	194	17.8	0.0	\$35,261	3.5	1.6
Men	35-44	168	15.4	0.0	\$40,656	3.5	1.4
Men	45-54	224	20.6	0.0	\$43,764	3.6	1.2
Men	55-64	185	17.0	0.0	\$36,471	3.5	1.2
Men	65-Up	90	8.3	0.0	\$24,383	3.1	1.2
Men	Total	1,089	100.0	42.1	\$32,197	3.3	1.4
N/A	N/A	315	100.0	0.0	\$18,492	2.7	1.3
N/A	Total	315	100.0	12.2	\$18,492	2.7	1.3
Total	00-19	238	9.2	0.0	\$3,785	2.7	1.6
Total	20-24	204	7.9	0.0	\$16,124	3.1	1.9
Total	25-34	365	14.1	0.0	\$27,210	3.5	1.7
Total	35-44	366	14.1	0.0	\$32,893	3.5	1.4
Total	45-54	500	19.3	0.0	\$34,805	3.6	1.3
Total	55-64	417	16.1	0.0	\$30,435	3.6	1.2
Total	65-Up	182	7.0	0.0	\$17,811	3.3	1.2
Total	N/A	315	12.2	0.0	\$18,492	2.7	1.3
Total	Total	2,587	100.0	100.0	\$25,250	3.3	1.4

Note: Persons worked at any time during the year.

County Determination: Based on county of employment in which the person made the most money in the year.

N/A: Represents persons with demographic data that is unavailable.

Wage Records in Wyoming: Employment and Earnings by Age and Gender with Place of Work in Hot Springs County, 2000-2015

Average Earnings by Age and Gender with Place of Work in Hot Springs County in 2009

Gender	Age Group	Number	Age Percent	Gender Percent	Average Annual Wage	Average Quarters Worked	Average Annual Employers
Women	00-19	100	8.6	0.0	\$3,164	2.8	1.6
Women	20-24	102	8.7	0.0	\$11,992	3.1	1.8
Women	25-34	176	15.1	0.0	\$19,044	3.4	1.6
Women	35-44	186	15.9	0.0	\$27,324	3.6	1.5
Women	45-54	286	24.5	0.0	\$27,784	3.6	1.3
Women	55-64	218	18.6	0.0	\$28,624	3.6	1.2
Women	65-Up	101	8.6	0.0	\$10,802	3.4	1.2
Women	Total	1,169	100.0	46.9	\$21,600	3.5	1.4
Men	00-19	97	9.4	0.0	\$4,676	2.7	1.4
Men	20-24	90	8.8	0.0	\$16,082	3.0	1.5
Men	25-34	206	20.1	0.0	\$29,575	3.3	1.5
Men	35-44	165	16.1	0.0	\$38,238	3.5	1.3
Men	45-54	209	20.4	0.0	\$42,183	3.6	1.2
Men	55-64	166	16.2	0.0	\$40,049	3.6	1.2
Men	65-Up	94	9.2	0.0	\$21,566	3.4	1.2
Men	Total	1,027	100.0	41.2	\$30,958	3.4	1.3
N/A	N/A	295	100.0	0.0	\$16,800	2.8	1.3
N/A	Total	295	100.0	11.8	\$16,800	2.8	1.3
Total	00-19	197	7.9	0.0	\$3,908	2.7	1.5
Total	20-24	192	7.7	0.0	\$13,909	3.0	1.6
Total	25-34	382	15.3	0.0	\$24,723	3.4	1.5
Total	35-44	351	14.1	0.0	\$32,454	3.6	1.4
Total	45-54	495	19.9	0.0	\$33,864	3.6	1.3
Total	55-64	384	15.4	0.0	\$33,563	3.6	1.2
Total	65-Up	195	7.8	0.0	\$15,991	3.4	1.2
Total	N/A	295	11.8	0.0	\$16,800	2.8	1.3
Total	Total	2,491	100.0	100.0	\$24,890	3.3	1.4

Note: Persons worked at any time during the year.

County Determination: Based on county of employment in which the person made the most money in the year.

N/A: Represents persons with demographic data that is unavailable.

Wage Records in Wyoming: Employment and Earnings by Age and Gender with Place of Work in Hot Springs County, 2000-2015

Average Earnings by Age and Gender with Place of Work in Hot Springs County in 2010

Gender	Age Group	Number	Age Percent	Gender Percent	Average Annual Wage	Average Quarters Worked	Average Annual Employers
Women	00-19	103	8.7	0.0	\$3,009	2.7	1.6
Women	20-24	108	9.1	0.0	\$12,884	3.1	1.7
Women	25-34	195	16.4	0.0	\$19,212	3.4	1.6
Women	35-44	189	15.9	0.0	\$26,648	3.7	1.5
Women	45-54	266	22.4	0.0	\$28,298	3.7	1.3
Women	55-64	228	19.2	0.0	\$29,440	3.7	1.2
Women	65-Up	100	8.4	0.0	\$11,126	3.3	1.2
Women	Total	1,189	100.0	47.1	\$21,730	3.5	1.4
Men	00-19	92	8.8	0.0	\$5,368	2.6	1.4
Men	20-24	106	10.1	0.0	\$14,721	2.9	1.6
Men	25-34	209	19.9	0.0	\$30,560	3.4	1.5
Men	35-44	164	15.6	0.0	\$39,710	3.5	1.3
Men	45-54	219	20.8	0.0	\$43,461	3.6	1.3
Men	55-64	172	16.4	0.0	\$43,428	3.7	1.2
Men	65-Up	89	8.5	0.0	\$21,506	3.2	1.1
Men	Total	1,051	100.0	41.7	\$32,212	3.4	1.3
N/A	N/A	283	100.0	0.0	\$18,015	2.8	1.3
N/A	Total	283	100.0	11.2	\$18,015	2.8	1.3
Total	00-19	195	7.7	0.0	\$4,122	2.6	1.5
Total	20-24	214	8.5	0.0	\$13,794	3.0	1.7
Total	25-34	404	16.0	0.0	\$25,082	3.4	1.6
Total	35-44	353	14.0	0.0	\$32,716	3.6	1.4
Total	45-54	485	19.2	0.0	\$35,145	3.7	1.3
Total	55-64	400	15.9	0.0	\$35,455	3.7	1.2
Total	65-Up	189	7.5	0.0	\$16,014	3.3	1.2
Total	N/A	283	11.2	0.0	\$18,015	2.8	1.3
Total	Total	2,523	100.0	100.0	\$25,680	3.3	1.4

Note: Persons worked at any time during the year.

County Determination: Based on county of employment in which the person made the most money in the year.

N/A: Represents persons with demographic data that is unavailable.

Wage Records in Wyoming: Employment and Earnings by Age and Gender with Place of Work in Hot Springs County, 2000-2015

Average Earnings by Age and Gender with Place of Work in Hot Springs County in 2011

Gender	Age Group	Number	Age Percent	Gender Percent	Average Annual Wage	Average Quarters Worked	Average Annual Employers
Women	00-19	104	8.7	0.0	\$3,085	2.5	1.4
Women	20-24	111	9.3	0.0	\$12,798	3.1	1.8
Women	25-34	197	16.5	0.0	\$20,110	3.3	1.5
Women	35-44	192	16.1	0.0	\$25,327	3.6	1.5
Women	45-54	256	21.5	0.0	\$29,031	3.7	1.4
Women	55-64	242	20.3	0.0	\$28,849	3.6	1.2
Women	65-Up	90	7.6	0.0	\$12,755	3.5	1.3
Women	Total	1,192	100.0	46.3	\$21,919	3.4	1.4
Men	00-19	91	8.3	0.0	\$3,666	2.4	1.4
Men	20-24	116	10.6	0.0	\$19,127	3.1	1.7
Men	25-34	233	21.2	0.0	\$31,742	3.3	1.4
Men	35-44	170	15.5	0.0	\$41,842	3.5	1.4
Men	45-54	215	19.6	0.0	\$45,120	3.6	1.2
Men	55-64	187	17.0	0.0	\$42,010	3.6	1.2
Men	65-Up	87	7.9	0.0	\$25,280	3.2	1.1
Men	Total	1,099	100.0	42.7	\$33,501	3.3	1.4
N/A	N/A	285	100.0	0.0	\$19,561	2.7	1.3
N/A	Total	285	100.0	11.1	\$19,561	2.7	1.3
Total	00-19	195	7.6	0.0	\$3,356	2.5	1.4
Total	20-24	227	8.8	0.0	\$16,032	3.1	1.8
Total	25-34	430	16.7	0.0	\$26,413	3.3	1.5
Total	35-44	362	14.1	0.0	\$33,083	3.5	1.5
Total	45-54	471	18.3	0.0	\$36,375	3.7	1.3
Total	55-64	429	16.7	0.0	\$34,586	3.6	1.2
Total	65-Up	177	6.9	0.0	\$18,911	3.4	1.2
Total	N/A	285	11.1	0.0	\$19,561	2.7	1.3
Total	Total	2,576	100.0	100.0	\$26,599	3.3	1.4

Note: Persons worked at any time during the year.

County Determination: Based on county of employment in which the person made the most money in the year.

N/A: Represents persons with demographic data that is unavailable.

Wage Records in Wyoming: Employment and Earnings by Age and Gender with Place of Work in Hot Springs County, 2000-2015

Average Earnings by Age and Gender with Place of Work in Hot Springs County in 2012

Gender	Age Group	Number	Age Percent	Gender Percent	Average Annual Wage	Average Quarters Worked	Average Annual Employers
Women	00-19	100	8.3	0.0	\$3,340	2.6	1.6
Women	20-24	112	9.2	0.0	\$11,613	3.0	1.8
Women	25-34	212	17.5	0.0	\$21,387	3.4	1.6
Women	35-44	195	16.1	0.0	\$27,122	3.6	1.5
Women	45-54	236	19.5	0.0	\$30,558	3.7	1.4
Women	55-64	253	20.9	0.0	\$29,792	3.6	1.2
Women	65-Up	103	8.5	0.0	\$13,539	3.4	1.2
Women	Total	1,211	100.0	47.5	\$22,792	3.4	1.4
Men	00-19	86	8.1	0.0	\$4,358	2.5	1.5
Men	20-24	97	9.1	0.0	\$19,435	3.0	1.8
Men	25-34	234	22.1	0.0	\$34,847	3.5	1.5
Men	35-44	173	16.3	0.0	\$46,880	3.5	1.3
Men	45-54	206	19.4	0.0	\$47,924	3.7	1.3
Men	55-64	178	16.8	0.0	\$45,593	3.6	1.2
Men	65-Up	87	8.2	0.0	\$26,622	3.3	1.2
Men	Total	1,061	100.0	41.6	\$36,596	3.4	1.4
N/A	N/A	278	100.0	0.0	\$18,104	2.6	1.3
N/A	Total	278	100.0	10.9	\$18,104	2.6	1.3
Total	00-19	186	7.3	0.0	\$3,811	2.6	1.6
Total	20-24	209	8.2	0.0	\$15,243	3.0	1.8
Total	25-34	446	17.5	0.0	\$28,449	3.4	1.5
Total	35-44	368	14.4	0.0	\$36,410	3.6	1.4
Total	45-54	442	17.3	0.0	\$38,652	3.7	1.3
Total	55-64	431	16.9	0.0	\$36,318	3.6	1.2
Total	65-Up	190	7.5	0.0	\$19,530	3.3	1.2
Total	N/A	278	10.9	0.0	\$18,104	2.6	1.3
Total	Total	2,550	100.0	100.0	\$28,024	3.3	1.4

Note: Persons worked at any time during the year.

County Determination: Based on county of employment in which the person made the most money in the year.

N/A: Represents persons with demographic data that is unavailable.

Wage Records in Wyoming: Employment and Earnings by Age and Gender with Place of Work in Hot Springs County, 2000-2015

Average Earnings by Age and Gender with Place of Work in Hot Springs County in 2013

Gender	Age Group	Number	Age Percent	Gender Percent	Average Annual Wage	Average Quarters Worked	Average Annual Employers
Women	00-19	111	9.2	0.0	\$3,559	2.8	1.6
Women	20-24	108	9.0	0.0	\$12,065	3.1	1.8
Women	25-34	209	17.3	0.0	\$21,931	3.4	1.6
Women	35-44	203	16.8	0.0	\$24,255	3.5	1.6
Women	45-54	227	18.8	0.0	\$31,409	3.7	1.3
Women	55-64	244	20.2	0.0	\$31,639	3.6	1.2
Women	65-Up	104	8.6	0.0	\$14,251	3.2	1.2
Women	Total	1,206	100.0	47.2	\$22,834	3.4	1.4
Men	00-19	78	7.5	0.0	\$4,158	2.5	1.5
Men	20-24	99	9.5	0.0	\$20,299	3.1	1.7
Men	25-34	234	22.5	0.0	\$35,507	3.4	1.5
Men	35-44	158	15.2	0.0	\$50,315	3.5	1.3
Men	45-54	196	18.8	0.0	\$48,596	3.7	1.2
Men	55-64	177	17.0	0.0	\$48,401	3.7	1.2
Men	65-Up	99	9.5	0.0	\$25,995	3.4	1.2
Men	Total	1,041	100.0	40.7	\$37,711	3.4	1.4
N/A	N/A	309	100.0	0.0	\$22,115	2.7	1.3
N/A	Total	309	100.0	12.1	\$22,115	2.7	1.3
Total	00-19	189	7.4	0.0	\$3,806	2.6	1.6
Total	20-24	207	8.1	0.0	\$16,003	3.1	1.8
Total	25-34	443	17.3	0.0	\$29,102	3.4	1.5
Total	35-44	361	14.1	0.0	\$35,661	3.5	1.5
Total	45-54	423	16.5	0.0	\$39,373	3.7	1.3
Total	55-64	421	16.5	0.0	\$38,686	3.6	1.2
Total	65-Up	203	7.9	0.0	\$19,978	3.3	1.2
Total	N/A	309	12.1	0.0	\$22,115	2.7	1.3
Total	Total	2,556	100.0	100.0	\$28,806	3.3	1.4

Note: Persons worked at any time during the year.

County Determination: Based on county of employment in which the person made the most money in the year.

N/A: Represents persons with demographic data that is unavailable.

Wage Records in Wyoming: Employment and Earnings by Age and Gender with Place of Work in Hot Springs County, 2000-2015

Average Earnings by Age and Gender with Place of Work in Hot Springs County in 2014

Gender	Age Group	Number	Age Percent	Gender Percent	Average Annual Wage	Average Quarters Worked	Average Annual Employers
Women	00-19	115	9.9	0.0	\$4,628	2.9	1.7
Women	20-24	83	7.1	0.0	\$11,857	3.1	1.9
Women	25-34	213	18.3	0.0	\$21,598	3.3	1.5
Women	35-44	206	17.7	0.0	\$27,409	3.6	1.5
Women	45-54	206	17.7	0.0	\$31,981	3.7	1.3
Women	55-64	248	21.3	0.0	\$32,423	3.7	1.2
Women	65-Up	94	8.1	0.0	\$16,327	3.3	1.2
Women	Total	1,165	100.0	46.4	\$23,971	3.4	1.5
Men	00-19	89	8.4	0.0	\$4,058	2.5	1.4
Men	20-24	114	10.8	0.0	\$21,161	3.1	1.7
Men	25-34	209	19.7	0.0	\$39,016	3.5	1.5
Men	35-44	181	17.1	0.0	\$49,987	3.6	1.4
Men	45-54	186	17.5	0.0	\$49,800	3.6	1.2
Men	55-64	179	16.9	0.0	\$49,949	3.6	1.2
Men	65-Up	101	9.5	0.0	\$24,154	3.3	1.1
Men	N/A	1	0.1	0.0	\$144	2.0	1.0
Men	Total	1,060	100.0	42.2	\$38,320	3.4	1.4
N/A	N/A	288	100.0	0.0	\$21,070	2.7	1.3
N/A	Total	288	100.0	11.5	\$21,070	2.7	1.3
Total	00-19	204	8.1	0.0	\$4,379	2.7	1.6
Total	20-24	197	7.8	0.0	\$17,241	3.1	1.8
Total	25-34	422	16.8	0.0	\$30,225	3.4	1.5
Total	35-44	387	15.4	0.0	\$37,969	3.6	1.5
Total	45-54	392	15.6	0.0	\$40,436	3.7	1.3
Total	55-64	427	17.0	0.0	\$39,770	3.6	1.2
Total	65-Up	195	7.8	0.0	\$20,381	3.3	1.2
Total	N/A	289	11.5	0.0	\$20,997	2.7	1.3
Total	Total	2,513	100.0	100.0	\$29,691	3.3	1.4

Note: Persons worked at any time during the year.

County Determination: Based on county of employment in which the person made the most money in the year.

N/A: Represents persons with demographic data that is unavailable.

Wage Records in Wyoming: Employment and Earnings by Age and Gender with Place of Work in Hot Springs County, 2000-2015

Average Earnings by Age and Gender with Place of Work in Hot Springs County in 2015

Gender	Age Group	Number	Age Percent	Gender Percent	Average Annual Wage	Average Quarters Worked	Average Annual Employers
Women	00-19	95	8.5	0.0	\$4,335	2.8	1.5
Women	20-24	81	7.3	0.0	\$13,665	3.2	1.8
Women	25-34	210	18.8	0.0	\$23,843	3.5	1.5
Women	35-44	199	17.8	0.0	\$27,557	3.6	1.5
Women	45-54	197	17.6	0.0	\$32,902	3.6	1.4
Women	55-64	243	21.8	0.0	\$31,595	3.6	1.2
Women	65-Up	92	8.2	0.0	\$17,287	3.4	1.1
Women	Total	1,117	100.0	46.3	\$24,852	3.5	1.4
Men	00-19	84	8.2	0.0	\$3,595	2.6	1.4
Men	20-24	90	8.8	0.0	\$21,482	3.4	1.7
Men	25-34	218	21.2	0.0	\$35,784	3.4	1.5
Men	35-44	157	15.3	0.0	\$49,106	3.6	1.3
Men	45-54	193	18.8	0.0	\$48,346	3.6	1.3
Men	55-64	186	18.1	0.0	\$47,190	3.5	1.1
Men	65-Up	97	9.5	0.0	\$22,910	3.3	1.2
Men	N/A	1	0.1	0.0	\$96	1.0	1.0
Men	Total	1,026	100.0	42.6	\$37,112	3.4	1.3
N/A	N/A	268	100.0	0.0	\$16,211	2.5	1.3
N/A	Total	268	100.0	11.1	\$16,211	2.5	1.3
Total	00-19	179	7.4	0.0	\$3,987	2.7	1.5
Total	20-24	171	7.1	0.0	\$17,779	3.3	1.7
Total	25-34	428	17.8	0.0	\$29,925	3.5	1.5
Total	35-44	356	14.8	0.0	\$37,060	3.6	1.4
Total	45-54	390	16.2	0.0	\$40,545	3.6	1.3
Total	55-64	429	17.8	0.0	\$38,356	3.6	1.2
Total	65-Up	189	7.8	0.0	\$20,173	3.3	1.1
Total	N/A	269	11.2	0.0	\$16,151	2.5	1.3
Total	Total	2,411	100.0	100.0	\$29,108	3.4	1.4

Note: Persons worked at any time during the year.

County Determination: Based on county of employment in which the person made the most money in the year.

N/A: Represents persons with demographic data that is unavailable.