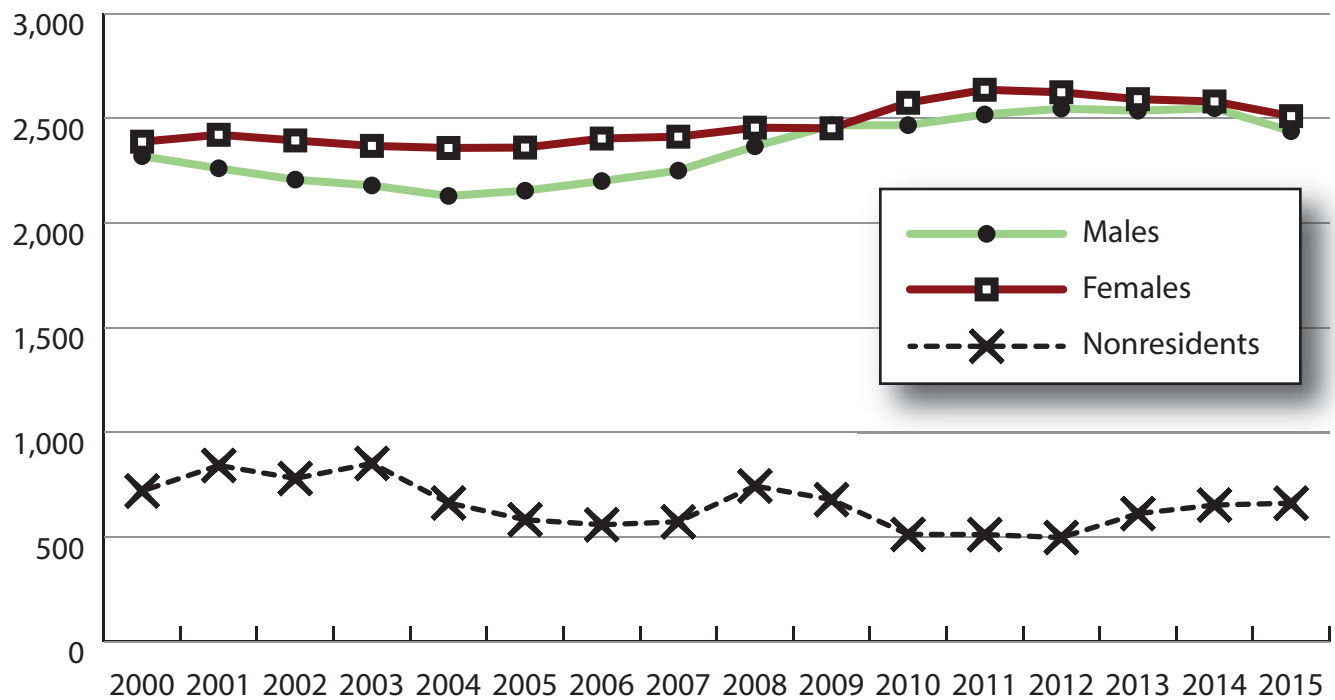
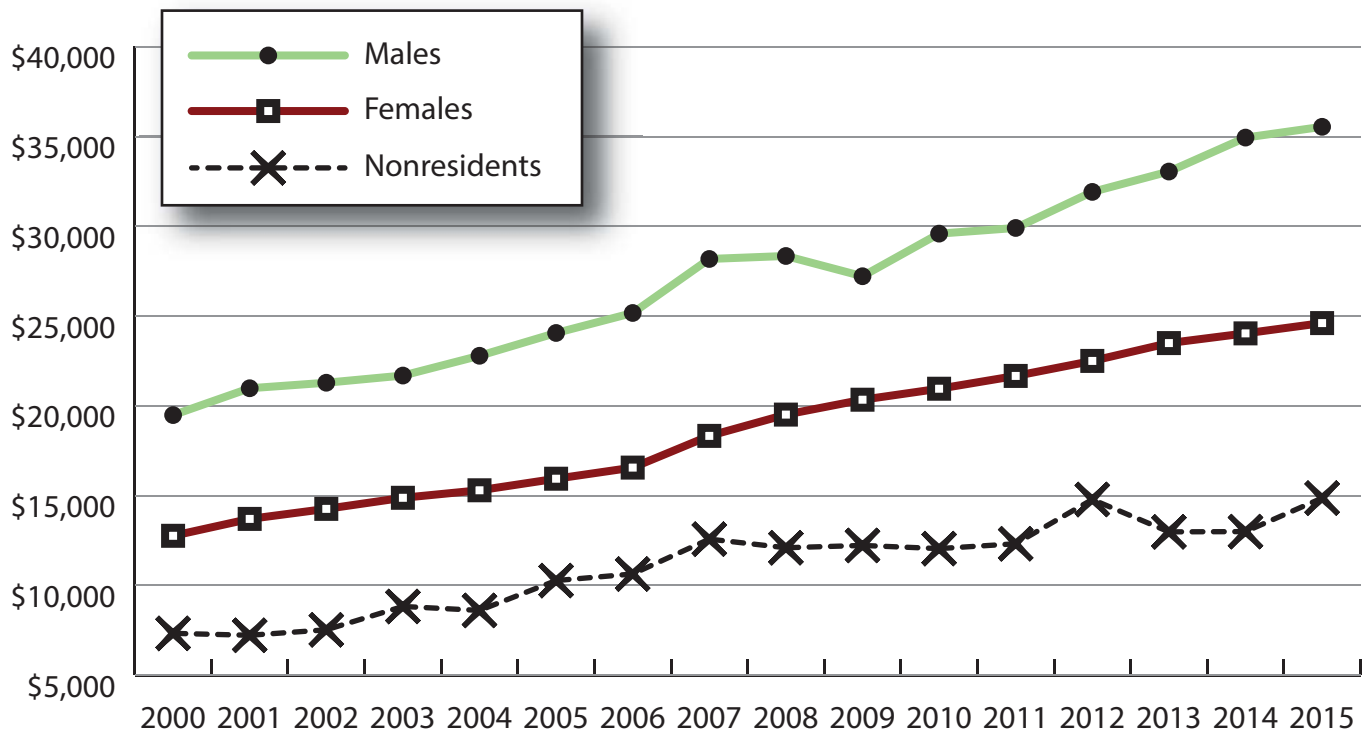


# Wage Records in Wyoming: Employment and Earnings by Age and Gender with Place of Work in Goshen County, 2000-2015

Total Number of Persons Working in Goshen County at Any Time by Gender, 2000-2015



Average Annual Earnings for Persons Working in Goshen County at Any Time by Gender, 2000-2015



# Wage Records in Wyoming: Employment and Earnings by Age and Gender with Place of Work in Goshen County, 2000-2015

## Average Earnings by Age and Gender with Place of Work in Goshen County in 2000

Gender	Age Group	Number	Age Percent	Gender Percent	Average Annual Wage	Average Quarters Worked	Average Annual Employers
Women	00-19	232	9.7	0.0	\$2,888	2.7	1.6
Women	20-24	265	11.1	0.0	\$5,556	2.9	1.7
Women	25-34	424	17.8	0.0	\$11,749	3.3	1.4
Women	35-44	516	21.6	0.0	\$15,514	3.5	1.3
Women	45-54	554	23.2	0.0	\$18,883	3.6	1.2
Women	55-64	296	12.4	0.0	\$13,960	3.5	1.2
Women	65-Up	99	4.1	0.0	\$7,153	3.2	1.1
Women	N/A	2	0.1	0.0	\$20,097	4.0	1.5
Women	Total	2,388	100.0	44.0	\$12,760	3.3	1.4
Men	00-19	243	10.5	0.0	\$2,695	2.4	1.4
Men	20-24	275	11.9	0.0	\$7,887	2.7	1.6
Men	25-34	436	18.8	0.0	\$17,306	3.2	1.5
Men	35-44	501	21.6	0.0	\$23,602	3.4	1.3
Men	45-54	466	20.1	0.0	\$32,286	3.5	1.2
Men	55-64	272	11.7	0.0	\$22,256	3.4	1.2
Men	65-Up	126	5.4	0.0	\$15,025	2.9	1.2
Men	Total	2,319	100.0	42.7	\$19,485	3.2	1.3
N/A	N/A	720	100.0	0.0	\$7,326	2.2	1.2
N/A	Total	720	100.0	13.3	\$7,326	2.2	1.2
Total	00-19	475	8.8	0.0	\$2,790	2.6	1.5
Total	20-24	540	10.0	0.0	\$6,743	2.8	1.7
Total	25-34	860	15.8	0.0	\$14,566	3.2	1.5
Total	35-44	1,017	18.7	0.0	\$19,498	3.4	1.3
Total	45-54	1,020	18.8	0.0	\$25,006	3.5	1.2
Total	55-64	568	10.5	0.0	\$17,933	3.5	1.2
Total	65-Up	225	4.1	0.0	\$11,561	3.1	1.1
Total	N/A	722	13.3	0.0	\$7,361	2.2	1.2
Total	Total	5,427	100.0	100.0	\$14,913	3.1	1.3

Note: Persons worked at any time during the year.

County Determination: Based on county of employment in which the person made the most money in the year.

N/A: Represents persons with demographic data that is unavailable.

# Wage Records in Wyoming: Employment and Earnings by Age and Gender with Place of Work in Goshen County, 2000-2015

## Average Earnings by Age and Gender with Place of Work in Goshen County in 2001

Gender	Age Group	Number	Age Percent	Gender Percent	Average Annual Wage	Average Quarters Worked	Average Annual Employers
Women	00-19	221	9.1	0.0	\$3,009	2.6	1.5
Women	20-24	288	11.9	0.0	\$6,711	3.0	1.8
Women	25-34	426	17.6	0.0	\$12,363	3.3	1.4
Women	35-44	503	20.8	0.0	\$16,311	3.4	1.3
Women	45-54	580	24.0	0.0	\$20,076	3.6	1.2
Women	55-64	290	12.0	0.0	\$15,884	3.5	1.2
Women	65-Up	112	4.6	0.0	\$7,383	3.1	1.1
Women	N/A	1	0.0	0.0	\$23,290	4.0	1.0
Women	Total	2,421	100.0	43.8	\$13,701	3.3	1.4
Men	00-19	226	10.0	0.0	\$3,185	2.5	1.4
Men	20-24	257	11.4	0.0	\$7,510	2.6	1.6
Men	25-34	396	17.5	0.0	\$18,569	3.2	1.5
Men	35-44	474	21.0	0.0	\$25,593	3.3	1.3
Men	45-54	485	21.5	0.0	\$32,161	3.5	1.2
Men	55-64	294	13.0	0.0	\$26,480	3.4	1.1
Men	65-Up	128	5.7	0.0	\$14,909	3.0	1.2
Men	N/A	1	0.0	0.0	\$10,092	1.0	1.0
Men	Total	2,261	100.0	40.9	\$20,980	3.2	1.3
N/A	N/A	842	100.0	0.0	\$7,218	2.0	1.2
N/A	Total	842	100.0	15.2	\$7,218	2.0	1.2
Total	00-19	447	8.1	0.0	\$3,098	2.5	1.4
Total	20-24	545	9.9	0.0	\$7,088	2.9	1.7
Total	25-34	822	14.9	0.0	\$15,353	3.2	1.4
Total	35-44	977	17.7	0.0	\$20,814	3.4	1.3
Total	45-54	1,065	19.3	0.0	\$25,579	3.5	1.2
Total	55-64	584	10.6	0.0	\$21,218	3.4	1.2
Total	65-Up	240	4.3	0.0	\$11,397	3.1	1.1
Total	N/A	844	15.3	0.0	\$7,240	2.0	1.2
Total	Total	5,524	100.0	100.0	\$15,692	3.0	1.3

Note: Persons worked at any time during the year.

County Determination: Based on county of employment in which the person made the most money in the year.

N/A: Represents persons with demographic data that is unavailable.

# Wage Records in Wyoming: Employment and Earnings by Age and Gender with Place of Work in Goshen County, 2000-2015

## Average Earnings by Age and Gender with Place of Work in Goshen County in 2002

Gender	Age Group	Number	Age Percent	Gender Percent	Average Annual Wage	Average Quarters Worked	Average Annual Employers
Women	00-19	232	9.7	0.0	\$2,805	2.7	1.5
Women	20-24	269	11.2	0.0	\$6,547	2.9	1.7
Women	25-34	397	16.6	0.0	\$12,621	3.3	1.4
Women	35-44	487	20.3	0.0	\$16,351	3.3	1.3
Women	45-54	590	24.6	0.0	\$20,916	3.5	1.2
Women	55-64	306	12.8	0.0	\$18,321	3.5	1.2
Women	65-Up	112	4.7	0.0	\$6,980	3.1	1.1
Women	N/A	1	0.0	0.0	\$23,064	4.0	1.0
Women	Total	2,394	100.0	44.5	\$14,260	3.3	1.3
Men	00-19	204	9.2	0.0	\$3,078	2.4	1.4
Men	20-24	271	12.3	0.0	\$7,690	2.7	1.6
Men	25-34	398	18.0	0.0	\$17,646	3.1	1.5
Men	35-44	430	19.5	0.0	\$26,130	3.4	1.3
Men	45-54	493	22.3	0.0	\$32,952	3.5	1.2
Men	55-64	293	13.3	0.0	\$26,802	3.5	1.2
Men	65-Up	118	5.3	0.0	\$16,193	3.1	1.2
Men	Total	2,207	100.0	41.0	\$21,287	3.2	1.3
N/A	N/A	780	100.0	0.0	\$7,523	2.2	1.3
N/A	Total	780	100.0	14.5	\$7,523	2.2	1.3
Total	00-19	436	8.1	0.0	\$2,933	2.5	1.5
Total	20-24	540	10.0	0.0	\$7,121	2.8	1.7
Total	25-34	795	14.8	0.0	\$15,137	3.2	1.4
Total	35-44	917	17.0	0.0	\$20,937	3.4	1.3
Total	45-54	1,083	20.1	0.0	\$26,395	3.5	1.2
Total	55-64	599	11.1	0.0	\$22,470	3.5	1.2
Total	65-Up	230	4.3	0.0	\$11,706	3.1	1.2
Total	N/A	781	14.5	0.0	\$7,543	2.2	1.3
Total	Total	5,381	100.0	100.0	\$16,165	3.1	1.3

Note: Persons worked at any time during the year.

County Determination: Based on county of employment in which the person made the most money in the year.

N/A: Represents persons with demographic data that is unavailable.

# Wage Records in Wyoming: Employment and Earnings by Age and Gender with Place of Work in Goshen County, 2000-2015

## Average Earnings by Age and Gender with Place of Work in Goshen County in 2003

Gender	Age Group	Number	Age Percent	Gender Percent	Average Annual Wage	Average Quarters Worked	Average Annual Employers
Women	00-19	231	9.8	0.0	\$2,714	2.6	1.6
Women	20-24	255	10.8	0.0	\$7,373	3.1	1.7
Women	25-34	387	16.3	0.0	\$13,071	3.2	1.3
Women	35-44	474	20.0	0.0	\$17,228	3.4	1.3
Women	45-54	589	24.9	0.0	\$21,100	3.5	1.2
Women	55-64	329	13.9	0.0	\$19,033	3.5	1.1
Women	65-Up	102	4.3	0.0	\$7,689	3.3	1.1
Women	N/A	1	0.0	0.0	\$23,142	4.0	1.0
Women	Total	2,368	100.0	43.9	\$14,877	3.3	1.3
Men	00-19	212	9.7	0.0	\$2,562	2.5	1.4
Men	20-24	270	12.4	0.0	\$7,963	2.7	1.5
Men	25-34	391	17.9	0.0	\$18,222	3.1	1.5
Men	35-44	406	18.6	0.0	\$26,321	3.3	1.3
Men	45-54	482	22.1	0.0	\$33,680	3.5	1.3
Men	55-64	305	14.0	0.0	\$28,646	3.4	1.2
Men	65-Up	112	5.1	0.0	\$15,896	3.2	1.2
Men	N/A	1	0.0	0.0	\$322	1.0	1.0
Men	Total	2,179	100.0	40.4	\$21,687	3.2	1.4
N/A	N/A	852	100.0	0.0	\$8,824	2.2	1.3
N/A	Total	852	100.0	15.8	\$8,824	2.2	1.3
Total	00-19	443	8.2	0.0	\$2,641	2.5	1.5
Total	20-24	525	9.7	0.0	\$7,676	2.9	1.6
Total	25-34	778	14.4	0.0	\$15,660	3.2	1.4
Total	35-44	880	16.3	0.0	\$21,423	3.4	1.3
Total	45-54	1,071	19.8	0.0	\$26,762	3.5	1.3
Total	55-64	634	11.7	0.0	\$23,657	3.5	1.1
Total	65-Up	214	4.0	0.0	\$11,985	3.2	1.2
Total	N/A	854	15.8	0.0	\$8,831	2.2	1.3
Total	Total	5,399	100.0	100.0	\$16,670	3.1	1.3

Note: Persons worked at any time during the year.

County Determination: Based on county of employment in which the person made the most money in the year.

N/A: Represents persons with demographic data that is unavailable.

# Wage Records in Wyoming: Employment and Earnings by Age and Gender with Place of Work in Goshen County, 2000-2015

## Average Earnings by Age and Gender with Place of Work in Goshen County in 2004

Gender	Age Group	Number	Age Percent	Gender Percent	Average Annual Wage	Average Quarters Worked	Average Annual Employers
Women	00-19	234	9.9	0.0	\$2,580	2.6	1.5
Women	20-24	259	11.0	0.0	\$6,657	3.0	1.7
Women	25-34	374	15.9	0.0	\$14,014	3.3	1.4
Women	35-44	463	19.6	0.0	\$17,493	3.5	1.4
Women	45-54	571	24.2	0.0	\$21,828	3.6	1.3
Women	55-64	354	15.0	0.0	\$19,673	3.5	1.1
Women	65-Up	102	4.3	0.0	\$9,283	3.1	1.0
Women	N/A	1	0.0	0.0	\$24,630	4.0	1.0
Women	Total	2,358	100.0	45.8	\$15,296	3.3	1.3
Men	00-19	203	9.5	0.0	\$2,460	2.4	1.3
Men	20-24	252	11.8	0.0	\$8,475	2.7	1.5
Men	25-34	402	18.9	0.0	\$19,447	3.2	1.4
Men	35-44	412	19.4	0.0	\$25,477	3.3	1.3
Men	45-54	451	21.2	0.0	\$36,263	3.6	1.2
Men	55-64	287	13.5	0.0	\$31,934	3.6	1.1
Men	65-Up	122	5.7	0.0	\$16,801	3.2	1.2
Men	Total	2,129	100.0	41.3	\$22,789	3.2	1.3
N/A	N/A	663	100.0	0.0	\$8,603	2.4	1.3
N/A	Total	663	100.0	12.9	\$8,603	2.4	1.3
Total	00-19	437	8.5	0.0	\$2,524	2.5	1.4
Total	20-24	511	9.9	0.0	\$7,553	2.9	1.6
Total	25-34	776	15.1	0.0	\$16,829	3.2	1.4
Total	35-44	875	17.0	0.0	\$21,252	3.4	1.3
Total	45-54	1,022	19.8	0.0	\$28,198	3.6	1.2
Total	55-64	641	12.4	0.0	\$25,163	3.5	1.1
Total	65-Up	224	4.3	0.0	\$13,378	3.2	1.1
Total	N/A	664	12.9	0.0	\$8,627	2.4	1.3
Total	Total	5,150	100.0	100.0	\$17,532	3.2	1.3

Note: Persons worked at any time during the year.

County Determination: Based on county of employment in which the person made the most money in the year.

N/A: Represents persons with demographic data that is unavailable.

# Wage Records in Wyoming: Employment and Earnings by Age and Gender with Place of Work in Goshen County, 2000-2015

## Average Earnings by Age and Gender with Place of Work in Goshen County in 2005

Gender	Age Group	Number	Age Percent	Gender Percent	Average Annual Wage	Average Quarters Worked	Average Annual Employers
Women	00-19	221	9.4	0.0	\$2,460	2.5	1.5
Women	20-24	270	11.4	0.0	\$6,514	3.0	1.7
Women	25-34	399	16.9	0.0	\$14,162	3.3	1.4
Women	35-44	429	18.2	0.0	\$19,201	3.5	1.3
Women	45-54	557	23.6	0.0	\$22,522	3.6	1.2
Women	55-64	375	15.9	0.0	\$21,117	3.6	1.2
Women	65-Up	108	4.6	0.0	\$8,694	3.1	1.1
Women	N/A	1	0.0	0.0	\$24,693	4.0	1.0
Women	Total	2,360	100.0	46.3	\$15,940	3.3	1.3
Men	00-19	216	10.0	0.0	\$2,450	2.4	1.4
Men	20-24	254	11.8	0.0	\$9,207	2.8	1.5
Men	25-34	385	17.9	0.0	\$20,271	3.2	1.4
Men	35-44	397	18.4	0.0	\$28,504	3.4	1.2
Men	45-54	470	21.8	0.0	\$35,906	3.5	1.2
Men	55-64	307	14.3	0.0	\$34,635	3.5	1.1
Men	65-Up	125	5.8	0.0	\$18,610	3.2	1.2
Men	Total	2,154	100.0	42.3	\$24,059	3.2	1.3
N/A	N/A	583	100.0	0.0	\$10,266	2.5	1.3
N/A	Total	583	100.0	11.4	\$10,266	2.5	1.3
Total	00-19	437	8.6	0.0	\$2,455	2.5	1.5
Total	20-24	524	10.3	0.0	\$7,819	2.9	1.6
Total	25-34	784	15.4	0.0	\$17,162	3.2	1.4
Total	35-44	826	16.2	0.0	\$23,672	3.4	1.3
Total	45-54	1,027	20.1	0.0	\$28,647	3.6	1.2
Total	55-64	682	13.4	0.0	\$27,202	3.5	1.2
Total	65-Up	233	4.6	0.0	\$14,014	3.2	1.1
Total	N/A	584	11.5	0.0	\$10,291	2.5	1.3
Total	Total	5,097	100.0	100.0	\$18,722	3.2	1.3

Note: Persons worked at any time during the year.

County Determination: Based on county of employment in which the person made the most money in the year.

N/A: Represents persons with demographic data that is unavailable.

# Wage Records in Wyoming: Employment and Earnings by Age and Gender with Place of Work in Goshen County, 2000-2015

## Average Earnings by Age and Gender with Place of Work in Goshen County in 2006

Gender	Age Group	Number	Age Percent	Gender Percent	Average Annual Wage	Average Quarters Worked	Average Annual Employers
Women	00-19	247	10.3	0.0	\$2,634	2.5	1.5
Women	20-24	271	11.3	0.0	\$6,846	2.8	1.7
Women	25-34	389	16.2	0.0	\$15,036	3.2	1.5
Women	35-44	429	17.9	0.0	\$20,052	3.4	1.3
Women	45-54	545	22.7	0.0	\$23,437	3.5	1.2
Women	55-64	406	16.9	0.0	\$22,032	3.5	1.1
Women	65-Up	115	4.8	0.0	\$9,484	3.1	1.1
Women	N/A	1	0.0	0.0	\$26,102	4.0	1.0
Women	Total	2,403	100.0	46.6	\$16,559	3.2	1.3
Men	00-19	245	11.1	0.0	\$2,601	2.2	1.3
Men	20-24	237	10.8	0.0	\$11,813	3.0	1.6
Men	25-34	385	17.5	0.0	\$21,357	3.1	1.3
Men	35-44	389	17.7	0.0	\$29,592	3.4	1.3
Men	45-54	494	22.5	0.0	\$37,293	3.5	1.2
Men	55-64	317	14.4	0.0	\$34,850	3.5	1.1
Men	65-Up	133	6.0	0.0	\$20,604	3.3	1.2
Men	Total	2,200	100.0	42.6	\$25,173	3.2	1.3
N/A	N/A	559	100.0	0.0	\$10,633	2.5	1.3
N/A	Total	559	100.0	10.8	\$10,633	2.5	1.3
Total	00-19	492	9.5	0.0	\$2,618	2.4	1.4
Total	20-24	508	9.8	0.0	\$9,163	2.9	1.7
Total	25-34	774	15.0	0.0	\$18,180	3.1	1.4
Total	35-44	818	15.8	0.0	\$24,589	3.4	1.3
Total	45-54	1,039	20.1	0.0	\$30,025	3.5	1.2
Total	55-64	723	14.0	0.0	\$27,652	3.5	1.1
Total	65-Up	248	4.8	0.0	\$15,448	3.2	1.1
Total	N/A	560	10.8	0.0	\$10,660	2.5	1.3
Total	Total	5,162	100.0	100.0	\$19,589	3.1	1.3

Note: Persons worked at any time during the year.

County Determination: Based on county of employment in which the person made the most money in the year.

N/A: Represents persons with demographic data that is unavailable.



# Wage Records in Wyoming: Employment and Earnings by Age and Gender with Place of Work in Goshen County, 2000-2015

## Average Earnings by Age and Gender with Place of Work in Goshen County in 2007

Gender	Age Group	Number	Age Percent	Gender Percent	Average Annual Wage	Average Quarters Worked	Average Annual Employers
Women	00-19	232	9.6	0.0	\$2,539	2.6	1.5
Women	20-24	270	11.2	0.0	\$7,461	3.0	1.7
Women	25-34	399	16.5	0.0	\$16,598	3.3	1.4
Women	35-44	420	17.4	0.0	\$22,524	3.5	1.3
Women	45-54	544	22.6	0.0	\$24,788	3.6	1.2
Women	55-64	419	17.4	0.0	\$25,157	3.6	1.1
Women	65-Up	125	5.2	0.0	\$11,702	3.3	1.1
Women	N/A	3	0.1	0.0	\$9,502	2.0	1.0
Women	Total	2,412	100.0	46.1	\$18,326	3.4	1.3
Men	00-19	235	10.4	0.0	\$3,032	2.4	1.5
Men	20-24	258	11.5	0.0	\$11,829	2.9	1.6
Men	25-34	423	18.8	0.0	\$26,140	3.2	1.4
Men	35-44	389	17.3	0.0	\$32,973	3.5	1.3
Men	45-54	472	21.0	0.0	\$42,330	3.6	1.2
Men	55-64	341	15.2	0.0	\$37,756	3.5	1.1
Men	65-Up	132	5.9	0.0	\$22,022	3.3	1.2
Men	Total	2,250	100.0	43.0	\$28,182	3.3	1.3
N/A	N/A	573	100.0	0.0	\$12,575	2.6	1.3
N/A	Total	573	100.0	10.9	\$12,575	2.6	1.3
Total	00-19	467	8.9	0.0	\$2,787	2.5	1.5
Total	20-24	528	10.1	0.0	\$9,595	2.9	1.6
Total	25-34	822	15.7	0.0	\$21,509	3.2	1.4
Total	35-44	809	15.5	0.0	\$27,549	3.5	1.3
Total	45-54	1,016	19.4	0.0	\$32,937	3.6	1.2
Total	55-64	760	14.5	0.0	\$30,810	3.6	1.1
Total	65-Up	257	4.9	0.0	\$17,002	3.3	1.2
Total	N/A	576	11.0	0.0	\$12,559	2.6	1.3
Total	Total	5,235	100.0	100.0	\$21,933	3.2	1.3

Note: Persons worked at any time during the year.

County Determination: Based on county of employment in which the person made the most money in the year.

N/A: Represents persons with demographic data that is unavailable.

# Wage Records in Wyoming: Employment and Earnings by Age and Gender with Place of Work in Goshen County, 2000-2015

## Average Earnings by Age and Gender with Place of Work in Goshen County in 2008

Gender	Age Group	Number	Age Percent	Gender Percent	Average Annual Wage	Average Quarters Worked	Average Annual Employers
Women	00-19	248	10.1	0.0	\$2,763	2.5	1.5
Women	20-24	250	10.2	0.0	\$7,805	2.9	1.6
Women	25-34	406	16.5	0.0	\$18,416	3.3	1.4
Women	35-44	412	16.8	0.0	\$24,044	3.5	1.3
Women	45-54	560	22.8	0.0	\$26,219	3.6	1.3
Women	55-64	431	17.6	0.0	\$26,174	3.6	1.1
Women	65-Up	147	6.0	0.0	\$12,863	3.4	1.1
Women	N/A	1	0.0	0.0	\$28,617	4.0	1.0
Women	Total	2,455	100.0	44.1	\$19,512	3.4	1.3
Men	00-19	238	10.1	0.0	\$3,295	2.3	1.4
Men	20-24	287	12.1	0.0	\$11,314	2.8	1.6
Men	25-34	443	18.7	0.0	\$28,014	3.2	1.3
Men	35-44	408	17.2	0.0	\$32,512	3.3	1.3
Men	45-54	469	19.8	0.0	\$41,903	3.6	1.2
Men	55-64	373	15.8	0.0	\$40,599	3.5	1.1
Men	65-Up	148	6.3	0.0	\$17,359	3.3	1.2
Men	Total	2,366	100.0	42.5	\$28,348	3.2	1.3
N/A	N/A	744	100.0	0.0	\$12,094	2.4	1.2
N/A	Total	744	100.0	13.4	\$12,094	2.4	1.2
Total	00-19	486	8.7	0.0	\$3,024	2.4	1.4
Total	20-24	537	9.6	0.0	\$9,680	2.8	1.6
Total	25-34	849	15.3	0.0	\$23,424	3.3	1.4
Total	35-44	820	14.7	0.0	\$28,257	3.4	1.3
Total	45-54	1,029	18.5	0.0	\$33,367	3.6	1.3
Total	55-64	804	14.4	0.0	\$32,866	3.6	1.1
Total	65-Up	295	5.3	0.0	\$15,118	3.4	1.2
Total	N/A	745	13.4	0.0	\$12,116	2.4	1.2
Total	Total	5,565	100.0	100.0	\$22,277	3.2	1.3

Note: Persons worked at any time during the year.

County Determination: Based on county of employment in which the person made the most money in the year.

N/A: Represents persons with demographic data that is unavailable.

# Wage Records in Wyoming: Employment and Earnings by Age and Gender with Place of Work in Goshen County, 2000-2015

## Average Earnings by Age and Gender with Place of Work in Goshen County in 2009

Gender	Age Group	Number	Age Percent	Gender Percent	Average Annual Wage	Average Quarters Worked	Average Annual Employers
Women	00-19	220	9.0	0.0	\$2,883	2.6	1.3
Women	20-24	249	10.2	0.0	\$7,561	2.9	1.5
Women	25-34	419	17.1	0.0	\$18,072	3.3	1.4
Women	35-44	412	16.8	0.0	\$25,415	3.5	1.3
Women	45-54	541	22.1	0.0	\$27,305	3.6	1.3
Women	55-64	457	18.6	0.0	\$26,881	3.6	1.2
Women	65-Up	153	6.2	0.0	\$14,572	3.4	1.1
Women	N/A	1	0.0	0.0	\$30,102	4.0	1.0
Women	Total	2,452	100.0	43.8	\$20,341	3.4	1.3
Men	00-19	188	7.6	0.0	\$3,264	2.3	1.3
Men	20-24	312	12.7	0.0	\$10,400	2.7	1.4
Men	25-34	497	20.2	0.0	\$26,599	3.1	1.3
Men	35-44	431	17.5	0.0	\$31,414	3.2	1.3
Men	45-54	481	19.5	0.0	\$35,944	3.4	1.1
Men	55-64	395	16.0	0.0	\$41,370	3.6	1.2
Men	65-Up	162	6.6	0.0	\$17,748	3.1	1.1
Men	Total	2,466	100.0	44.1	\$27,220	3.1	1.2
N/A	N/A	679	100.0	0.0	\$12,223	2.4	1.2
N/A	Total	679	100.0	12.1	\$12,223	2.4	1.2
Total	00-19	408	7.3	0.0	\$3,059	2.5	1.3
Total	20-24	561	10.0	0.0	\$9,140	2.8	1.5
Total	25-34	916	16.4	0.0	\$22,699	3.2	1.3
Total	35-44	843	15.1	0.0	\$28,482	3.4	1.3
Total	45-54	1,022	18.3	0.0	\$31,371	3.5	1.2
Total	55-64	852	15.2	0.0	\$33,598	3.6	1.2
Total	65-Up	315	5.6	0.0	\$16,206	3.3	1.1
Total	N/A	680	12.1	0.0	\$12,249	2.4	1.2
Total	Total	5,597	100.0	100.0	\$22,387	3.2	1.3

Note: Persons worked at any time during the year.

County Determination: Based on county of employment in which the person made the most money in the year.

N/A: Represents persons with demographic data that is unavailable.

# Wage Records in Wyoming: Employment and Earnings by Age and Gender with Place of Work in Goshen County, 2000-2015

## Average Earnings by Age and Gender with Place of Work in Goshen County in 2010

Gender	Age Group	Number	Age Percent	Gender Percent	Average Annual Wage	Average Quarters Worked	Average Annual Employers
Women	00-19	220	8.5	0.0	\$3,459	2.6	1.4
Women	20-24	285	11.1	0.0	\$7,846	2.9	1.5
Women	25-34	448	17.4	0.0	\$18,849	3.3	1.3
Women	35-44	437	17.0	0.0	\$26,365	3.5	1.3
Women	45-54	540	21.0	0.0	\$27,778	3.6	1.3
Women	55-64	484	18.8	0.0	\$28,297	3.6	1.2
Women	65-Up	159	6.2	0.0	\$14,124	3.2	1.1
Women	N/A	1	0.0	0.0	\$29,172	4.0	1.0
Women	Total	2,574	100.0	46.3	\$20,953	3.3	1.3
Men	00-19	189	7.7	0.0	\$3,868	2.3	1.2
Men	20-24	324	13.1	0.0	\$11,305	2.8	1.4
Men	25-34	509	20.6	0.0	\$28,790	3.2	1.3
Men	35-44	436	17.7	0.0	\$35,114	3.4	1.2
Men	45-54	452	18.3	0.0	\$38,936	3.5	1.2
Men	55-64	404	16.4	0.0	\$42,745	3.6	1.1
Men	65-Up	153	6.2	0.0	\$24,702	3.3	1.1
Men	Total	2,467	100.0	44.4	\$29,593	3.2	1.2
N/A	N/A	513	100.0	0.0	\$12,047	2.5	1.2
N/A	Total	513	100.0	9.2	\$12,047	2.5	1.2
Total	00-19	409	7.4	0.0	\$3,648	2.5	1.3
Total	20-24	609	11.0	0.0	\$9,686	2.8	1.4
Total	25-34	957	17.2	0.0	\$24,136	3.2	1.3
Total	35-44	873	15.7	0.0	\$30,735	3.4	1.2
Total	45-54	992	17.9	0.0	\$32,862	3.6	1.2
Total	55-64	888	16.0	0.0	\$34,870	3.6	1.2
Total	65-Up	312	5.6	0.0	\$19,311	3.3	1.1
Total	N/A	514	9.3	0.0	\$12,080	2.5	1.2
Total	Total	5,554	100.0	100.0	\$23,968	3.2	1.3

Note: Persons worked at any time during the year.

County Determination: Based on county of employment in which the person made the most money in the year.

N/A: Represents persons with demographic data that is unavailable.

# Wage Records in Wyoming: Employment and Earnings by Age and Gender with Place of Work in Goshen County, 2000-2015

## Average Earnings by Age and Gender with Place of Work in Goshen County in 2011

Gender	Age Group	Number	Age Percent	Gender Percent	Average Annual Wage	Average Quarters Worked	Average Annual Employers
Women	00-19	205	7.8	0.0	\$2,755	2.4	1.4
Women	20-24	335	12.7	0.0	\$9,040	2.9	1.5
Women	25-34	484	18.4	0.0	\$18,995	3.2	1.3
Women	35-44	426	16.2	0.0	\$27,064	3.5	1.3
Women	45-54	544	20.6	0.0	\$28,929	3.6	1.3
Women	55-64	495	18.8	0.0	\$30,012	3.7	1.2
Women	65-Up	146	5.5	0.0	\$14,882	3.3	1.1
Women	N/A	1	0.0	0.0	\$29,300	4.0	1.0
Women	Total	2,636	100.0	46.5	\$21,666	3.3	1.3
Men	00-19	194	7.7	0.0	\$4,003	2.4	1.4
Men	20-24	339	13.5	0.0	\$12,296	2.8	1.4
Men	25-34	518	20.6	0.0	\$28,988	3.3	1.3
Men	35-44	442	17.6	0.0	\$35,146	3.4	1.3
Men	45-54	451	17.9	0.0	\$40,763	3.5	1.2
Men	55-64	413	16.4	0.0	\$40,975	3.6	1.2
Men	65-Up	161	6.4	0.0	\$28,001	3.3	1.1
Men	Total	2,518	100.0	44.4	\$29,909	3.3	1.2
N/A	N/A	512	100.0	0.0	\$12,317	2.5	1.2
N/A	Total	512	100.0	9.0	\$12,317	2.5	1.2
Total	00-19	399	7.0	0.0	\$3,362	2.4	1.4
Total	20-24	674	11.9	0.0	\$10,678	2.8	1.5
Total	25-34	1,002	17.7	0.0	\$24,161	3.2	1.3
Total	35-44	868	15.3	0.0	\$31,180	3.5	1.3
Total	45-54	995	17.6	0.0	\$34,293	3.6	1.2
Total	55-64	908	16.0	0.0	\$34,998	3.6	1.2
Total	65-Up	307	5.4	0.0	\$21,762	3.3	1.1
Total	N/A	513	9.1	0.0	\$12,350	2.5	1.2
Total	Total	5,666	100.0	100.0	\$24,484	3.2	1.3

Note: Persons worked at any time during the year.

County Determination: Based on county of employment in which the person made the most money in the year.

N/A: Represents persons with demographic data that is unavailable.

# Wage Records in Wyoming: Employment and Earnings by Age and Gender with Place of Work in Goshen County, 2000-2015

## Average Earnings by Age and Gender with Place of Work in Goshen County in 2012

Gender	Age Group	Number	Age Percent	Gender Percent	Average Annual Wage	Average Quarters Worked	Average Annual Employers
Women	00-19	183	7.0	0.0	\$3,450	2.5	1.4
Women	20-24	317	12.1	0.0	\$9,919	3.0	1.5
Women	25-34	487	18.6	0.0	\$21,078	3.3	1.3
Women	35-44	432	16.5	0.0	\$27,150	3.5	1.3
Women	45-54	537	20.5	0.0	\$29,604	3.6	1.3
Women	55-64	508	19.4	0.0	\$29,465	3.7	1.1
Women	65-Up	159	6.1	0.0	\$14,963	3.4	1.1
Women	N/A	1	0.0	0.0	\$30,004	4.0	1.0
Women	Total	2,624	100.0	46.3	\$22,502	3.4	1.3
Men	00-19	183	7.2	0.0	\$3,584	2.3	1.4
Men	20-24	339	13.3	0.0	\$13,534	2.8	1.4
Men	25-34	523	20.5	0.0	\$33,127	3.3	1.3
Men	35-44	459	18.0	0.0	\$36,376	3.4	1.2
Men	45-54	443	17.4	0.0	\$43,483	3.6	1.2
Men	55-64	425	16.7	0.0	\$42,854	3.6	1.1
Men	65-Up	173	6.8	0.0	\$26,139	3.5	1.1
Men	N/A	1	0.0	0.0	\$339	1.0	1.0
Men	Total	2,546	100.0	44.9	\$31,918	3.3	1.3
N/A	N/A	498	100.0	0.0	\$14,784	2.6	1.2
N/A	Total	498	100.0	8.8	\$14,784	2.6	1.2
Total	00-19	366	6.5	0.0	\$3,517	2.4	1.4
Total	20-24	656	11.6	0.0	\$11,787	2.9	1.5
Total	25-34	1,010	17.8	0.0	\$27,317	3.3	1.3
Total	35-44	891	15.7	0.0	\$31,903	3.4	1.3
Total	45-54	980	17.3	0.0	\$35,878	3.6	1.2
Total	55-64	933	16.5	0.0	\$35,564	3.6	1.1
Total	65-Up	332	5.9	0.0	\$20,787	3.4	1.1
Total	N/A	500	8.8	0.0	\$14,786	2.6	1.2
Total	Total	5,668	100.0	100.0	\$26,053	3.3	1.3

Note: Persons worked at any time during the year.

County Determination: Based on county of employment in which the person made the most money in the year.

N/A: Represents persons with demographic data that is unavailable.

# Wage Records in Wyoming: Employment and Earnings by Age and Gender with Place of Work in Goshen County, 2000-2015

## Average Earnings by Age and Gender with Place of Work in Goshen County in 2013

Gender	Age Group	Number	Age Percent	Gender Percent	Average Annual Wage	Average Quarters Worked	Average Annual Employers
Women	00-19	183	7.1	0.0	\$3,363	2.4	1.5
Women	20-24	312	12.0	0.0	\$10,913	3.0	1.6
Women	25-34	500	19.3	0.0	\$22,513	3.4	1.4
Women	35-44	423	16.3	0.0	\$30,138	3.6	1.3
Women	45-54	492	19.0	0.0	\$30,440	3.6	1.3
Women	55-64	507	19.6	0.0	\$29,793	3.6	1.2
Women	65-Up	172	6.6	0.0	\$15,815	3.4	1.1
Women	N/A	2	0.1	0.0	\$25,487	2.5	1.0
Women	Total	2,591	100.0	45.1	\$23,496	3.4	1.3
Men	00-19	180	7.1	0.0	\$3,883	2.3	1.4
Men	20-24	311	12.3	0.0	\$15,561	3.0	1.5
Men	25-34	537	21.2	0.0	\$33,447	3.3	1.3
Men	35-44	453	17.9	0.0	\$36,707	3.4	1.2
Men	45-54	441	17.4	0.0	\$44,305	3.5	1.2
Men	55-64	422	16.6	0.0	\$43,968	3.5	1.1
Men	65-Up	192	7.6	0.0	\$29,162	3.4	1.1
Men	Total	2,536	100.0	44.2	\$33,052	3.3	1.2
N/A	N/A	612	100.0	0.0	\$12,980	2.4	1.2
N/A	Total	612	100.0	10.7	\$12,980	2.4	1.2
Total	00-19	363	6.3	0.0	\$3,621	2.4	1.4
Total	20-24	623	10.9	0.0	\$13,233	3.0	1.6
Total	25-34	1,037	18.1	0.0	\$28,175	3.3	1.3
Total	35-44	876	15.3	0.0	\$33,535	3.5	1.2
Total	45-54	933	16.3	0.0	\$36,994	3.6	1.2
Total	55-64	929	16.2	0.0	\$36,232	3.6	1.1
Total	65-Up	364	6.3	0.0	\$22,855	3.4	1.1
Total	N/A	614	10.7	0.0	\$13,021	2.4	1.2
Total	Total	5,739	100.0	100.0	\$26,597	3.2	1.3

Note: Persons worked at any time during the year.

County Determination: Based on county of employment in which the person made the most money in the year.

N/A: Represents persons with demographic data that is unavailable.

# Wage Records in Wyoming: Employment and Earnings by Age and Gender with Place of Work in Goshen County, 2000-2015

## Average Earnings by Age and Gender with Place of Work in Goshen County in 2014

Gender	Age Group	Number	Age Percent	Gender Percent	Average Annual Wage	Average Quarters Worked	Average Annual Employers
Women	00-19	193	7.5	0.0	\$3,315	2.4	1.4
Women	20-24	290	11.2	0.0	\$10,310	3.1	1.7
Women	25-34	497	19.3	0.0	\$22,631	3.4	1.4
Women	35-44	459	17.8	0.0	\$30,515	3.5	1.4
Women	45-54	464	18.0	0.0	\$32,008	3.6	1.3
Women	55-64	499	19.3	0.0	\$30,181	3.7	1.2
Women	65-Up	177	6.9	0.0	\$18,012	3.4	1.1
Women	N/A	1	0.0	0.0	\$31,084	4.0	1.0
Women	Total	2,580	100.0	44.6	\$24,037	3.4	1.4
Men	00-19	184	7.2	0.0	\$4,520	2.4	1.4
Men	20-24	299	11.7	0.0	\$15,356	2.9	1.6
Men	25-34	556	21.8	0.0	\$36,549	3.4	1.3
Men	35-44	461	18.1	0.0	\$40,223	3.5	1.2
Men	45-54	427	16.8	0.0	\$44,913	3.5	1.2
Men	55-64	425	16.7	0.0	\$46,614	3.5	1.1
Men	65-Up	196	7.7	0.0	\$29,393	3.4	1.1
Men	Total	2,548	100.0	44.1	\$34,944	3.3	1.3
N/A	N/A	653	100.0	0.0	\$12,993	2.4	1.2
N/A	Total	653	100.0	11.3	\$12,993	2.4	1.2
Total	00-19	377	6.5	0.0	\$3,903	2.4	1.4
Total	20-24	589	10.2	0.0	\$12,872	3.0	1.6
Total	25-34	1,053	18.2	0.0	\$29,980	3.4	1.4
Total	35-44	920	15.9	0.0	\$35,380	3.5	1.3
Total	45-54	891	15.4	0.0	\$38,192	3.6	1.2
Total	55-64	924	16.0	0.0	\$37,739	3.6	1.2
Total	65-Up	373	6.5	0.0	\$23,992	3.4	1.1
Total	N/A	654	11.3	0.0	\$13,021	2.4	1.2
Total	Total	5,781	100.0	100.0	\$27,597	3.3	1.3

Note: Persons worked at any time during the year.

County Determination: Based on county of employment in which the person made the most money in the year.

N/A: Represents persons with demographic data that is unavailable.



# Wage Records in Wyoming: Employment and Earnings by Age and Gender with Place of Work in Goshen County, 2000-2015

## Average Earnings by Age and Gender with Place of Work in Goshen County in 2015

Gender	Age Group	Number	Age Percent	Gender Percent	Average Annual Wage	Average Quarters Worked	Average Annual Employers
Women	00-19	189	7.5	0.0	\$3,664	2.6	1.5
Women	20-24	269	10.7	0.0	\$11,393	3.2	1.6
Women	25-34	481	19.2	0.0	\$22,482	3.4	1.4
Women	35-44	456	18.2	0.0	\$32,729	3.6	1.4
Women	45-54	427	17.0	0.0	\$31,682	3.6	1.2
Women	55-64	495	19.7	0.0	\$30,617	3.7	1.2
Women	65-Up	192	7.6	0.0	\$18,550	3.4	1.1
Women	N/A	1	0.0	0.0	\$31,876	4.0	1.0
Women	Total	2,510	100.0	44.7	\$24,610	3.4	1.3
Men	00-19	172	7.1	0.0	\$4,648	2.5	1.4
Men	20-24	289	11.9	0.0	\$14,716	2.9	1.5
Men	25-34	540	22.1	0.0	\$35,061	3.4	1.3
Men	35-44	429	17.6	0.0	\$40,457	3.4	1.3
Men	45-54	410	16.8	0.0	\$44,663	3.5	1.2
Men	55-64	407	16.7	0.0	\$48,714	3.7	1.1
Men	65-Up	191	7.8	0.0	\$37,567	3.4	1.1
Men	Total	2,438	100.0	43.5	\$35,544	3.3	1.3
N/A	N/A	662	100.0	0.0	\$14,862	2.5	1.3
N/A	Total	662	100.0	11.8	\$14,862	2.5	1.3
Total	00-19	361	6.4	0.0	\$4,133	2.5	1.5
Total	20-24	558	9.9	0.0	\$13,114	3.0	1.6
Total	25-34	1,021	18.2	0.0	\$29,135	3.4	1.3
Total	35-44	885	15.8	0.0	\$36,475	3.5	1.3
Total	45-54	837	14.9	0.0	\$38,041	3.5	1.2
Total	55-64	902	16.1	0.0	\$38,783	3.7	1.2
Total	65-Up	383	6.8	0.0	\$28,034	3.4	1.1
Total	N/A	663	11.8	0.0	\$14,888	2.5	1.3
Total	Total	5,610	100.0	100.0	\$28,211	3.3	1.3

Note: Persons worked at any time during the year.

County Determination: Based on county of employment in which the person made the most money in the year.

N/A: Represents persons with demographic data that is unavailable.