

Wyoming Growing and Declining Industries Report

Second Quarter 2022

Prepared by: Laura Yetter, Senior Economist, and Michael Moore, Research Supervisor
Research & Planning, Wyoming Department of Workforce Services

Published November 8, 2022



Wyoming Growing and Declining Industries Report, Second Quarter 2022

Wyoming Department of Workforce Services
Robin Sessions Cooley, Director

Research & Planning

Tony Glover, Manager

Carola Cowan, Bureau of Labor Statistics Programs Supervisor
Michael Moore, Research Supervisor

Prepared by:

Laura Yetter, Senior Economist
Michael Moore, Research Supervisor

Editorial Committee:

David Bullard, Jaime Cruz, Matthew Halama, Lisa Knapp, Chris McGrath, Michael Moore, and Laura Yetter

Published November 8, 2022.

©2022 by the Wyoming Department of Workforce Services, Research & Planning

Department of Workforce Services Nondiscrimination Statement

The Department of Workforce Services does not discriminate on the basis of race, color, religion, national origin, sex, age, or disability. It is our intention that all individuals seeking services from our agency be given equal opportunity and that eligibility decisions be based upon applicable statutes, rules, and regulations.

Research & Planning

P.O. Box 2760
Casper, WY 82602
Phone: (307) 473-3807
Fax: (307) 473-3834

R&P Website: <https://doe.state.wy.us/LMI/>

Growing and Declining Industries: https://doe.state.wy.us/LMI/G_DInd/G_D_Industries.htm

URL for this report: https://doe.state.wy.us/LMI/G_DInd/Report_22Q2.pdf

“Your Source for Wyoming Labor Market Information”

Who We Are

Research & Planning (R&P) functions as an exclusively statistical entity within the Wyoming Department of Workforce Services. R&P collects, analyzes, and publishes timely and accurate labor market information (LMI) meeting established statistical standards. We work to make the labor market more efficient by providing the public and the public’s representatives with the information needed for evidence-based, informed decision making.



Wyoming Growing and Declining Industries Report, 2022Q2

by: *Laura Yetter, Senior Economist*

A *growing* or *declining* industry is defined as an industry's employment level increasing or decreasing for two consecutive quarters by 5% or more compared to the prior the year. For example, all industries that grew or declined in employment by at least 5% from first quarter 2021 to first quarter 2022 (2021Q1 to 2022Q1) and subsequently from second quarter 2021 to second quarter 2022 (2021Q2 to 2022Q2) were included in the respective tables in this report.

Industries are defined by the North American Industry Classification System (NAICS). For this research, growing and declining industries were determined at the three-digit subsector level. For more information on NAICS, please see <https://www.census.gov/naics/>.

The database used to generate this information was the Quarterly Census of Employment and Wages (QCEW) file, which has roughly a half-year time lag from the distribution of this report. Growing and declining industry information is updated every quarter when new QCEW data become available. Only subsectors with employment sizes of 100 or more are included in these lists. Consequently, while employment in other industries may meet the growth criteria, that growth is taking place in industries with employment of less than 100.

Wyoming had 16 growing industries in 2022Q2, which accounted for 21.9% of all industries and 17.5% of the state's total employment (see Table 3 and Figure 2, page 9). For example, on the growing industries table (see Table 1, pages 5-6), average

Growing and Declining Industries

Historical growing and declining industry data for Wyoming are now available online at https://doe.state.wy.us/LMI/G_DInd/G_D_Industries.htm

monthly employment for support activities for mining grew by 21.6% (1,053 jobs) from 2021Q1 to 2022Q1 and by 19.6% (1,018 jobs) from 2021Q2 to 2022Q2, thus qualifying as a growing industry in 2022Q2 with an average over-the-year change of 20.6%. Other examples of growing industries in 2022Q2 included computer & electronic product manufacturing (37.9% average over-the-year change), motion picture & sound recording industries (28.0%), and miscellaneous manufacturing (25.4%).

The declining industry table (see Table 2, page 7) reads the same way, except with negative changes, and therefore, declining industries. There were six declining industries in 2022Q2, which made up 8.2% of all industries and 1.6% of the state's total employment. For example, agriculture & forestry support activities decreased by 17.5% (-39 jobs) over the year in 2022Q1 and 10.4% (-30 jobs) over the year in 2022Q2, with an average over-the-year change of -14.0%. Other examples of declining industries included pipeline transportation (-9.3% average change), petroleum & coal products manufacturing (-8.9%), and private households (-8.8%).

The *average weekly wage* is calculated by dividing total wages for a particular subsector by the total number of jobs and

the number of weeks in the observed quarter. In 2022Q2, the average weekly wage was \$1,367 for growing industries and \$1,607 for declining industries (see Table 3 and Figure 3, page 9). Overall, the state's average weekly wage for 2022Q2 was \$1,078.

During periods of economic expansion, the number of growing industries is much greater than the number of declining industries (see Figure 1). For example, Wyoming had 26 growing industries 2006Q3 and 2006Q4, compared to three and five declining industries, respectively.

But during economic downturns, there

are far more declining industries than growing industries. R&P has defined an *economic downturn* as a period of at least two consecutive quarters of over-the-year decrease in average monthly employment and total wages based on data from the QCEW. Over the last 20 years, Wyoming has experienced three periods of economic downturn: 2009Q1-2010Q1, 2015Q2-2016Q4, and 2020Q2-2021Q1. During the most recent economic downturn, which was driven by the COVID-19 pandemic and declining energy prices, Wyoming had 37 declining industries in 2020Q3 compared to just three growing industries.

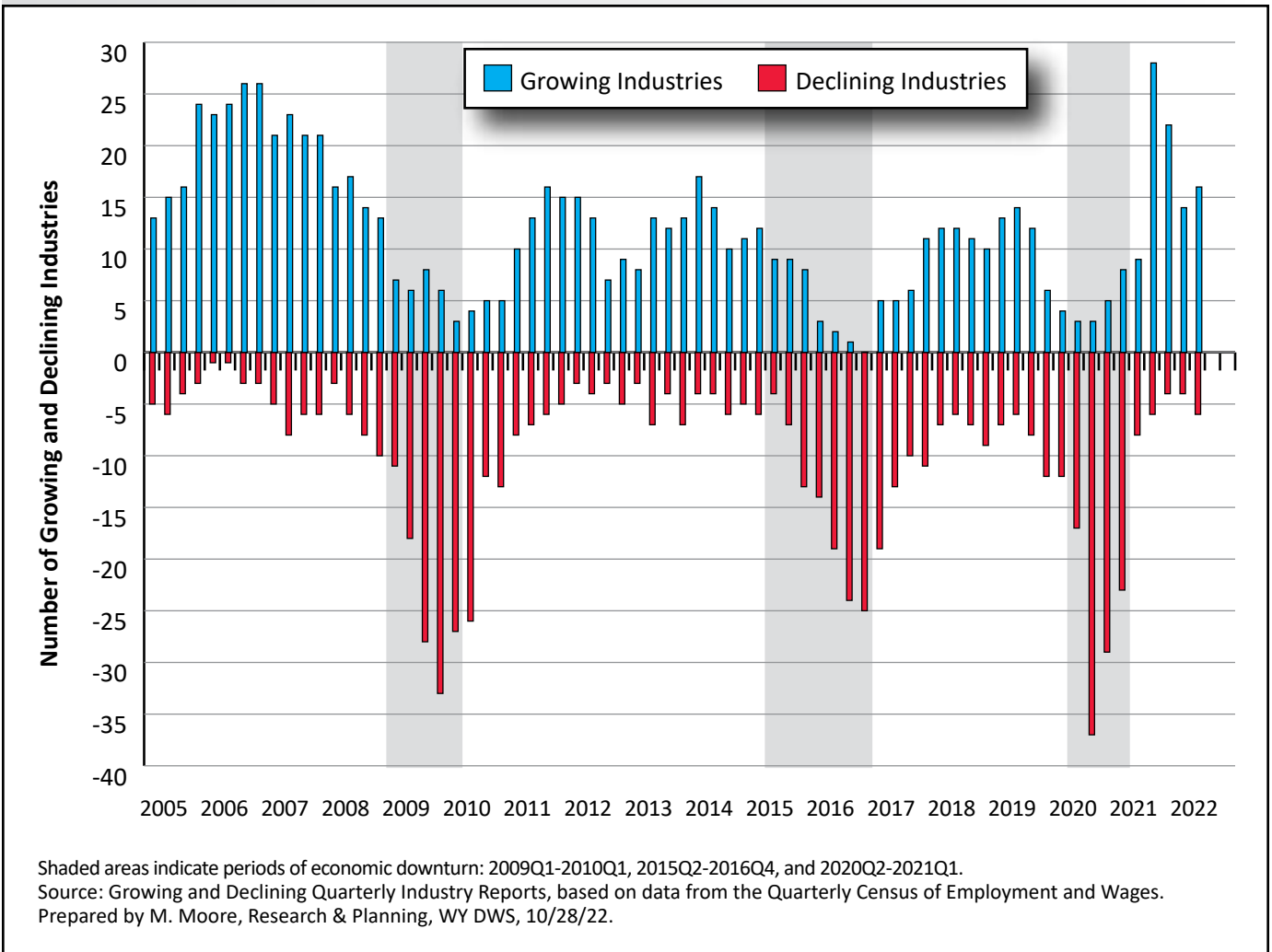


Figure 1: Number of Growing and Declining Industries in Wyoming by Year and Quarter, 2005Q1-2022Q2

Table 1: Growing Industries Report for Wyoming, Second Quarter 2022^a

Subsector (3-Digit NAICS ^b)	Sector (2-Digit NAICS)	Employment (Current Quarter)				Employment (Prior Quarter)				Growing Industries		
		2022Q2	2021Q2	N	%	2022Q1	2021Q1	N	%	Average Change		Average Weekly Wage
Mining, Except Oil & Gas (212)	Mining (21)	7,616	7,067	549	7.8	7,463	7,093	370	5.2	460	6.5	\$1,923
Support Activities For Mining (213)	Mining (21)	6,225	5,207	1,018	19.6	5,938	4,885	1,053	21.6	1,036	20.6	\$1,613
Beverage & Tobacco Product Mfg. (312)	Manufacturing (31-33)	535	502	33	6.6	510	471	39	8.3	36	7.4	\$908
Plastics & Rubber Products Mfg. (326)	Manufacturing (31-33)	384	356	28	7.9	395	322	73	22.7	51	15.3	\$825
Primary Metal Mfg. (331)	Manufacturing (31-33)	128	114	14	12.3	130	117	13	11.1	14	11.7	\$1,420
Fabricated Metal Product Mfg. (332)	Manufacturing (31-33)	1,767	1,629	138	8.5	1,708	1,597	111	7.0	125	7.7	\$1,196
Machinery Mfg. (333)	Manufacturing (31-33)	668	627	41	6.5	656	622	34	5.5	38	6.0	\$1,132
Computer & Electronic Product Mfg. (334)	Manufacturing (31-33)	341	267	74	27.7	326	220	106	48.2	90	37.9	\$1,186
Electrical Equipment & Appliance Mfg. (335)	Manufacturing (31-33)	381	354	27	7.6	365	341	24	7.0	26	7.3	\$1,232
Miscellaneous Mfg. (339)	Manufacturing (31-33)	192	146	46	31.5	167	140	27	19.3	37	25.4	\$752
Motion Picture & Sound Recording Industries (512)	Information (51)	399	310	89	28.7	363	285	78	27.4	84	28.0	\$374

^aIncludes both public & privately owned firms.

^bNorth American Industry Classification System.

^cThe percentage for average change is the employment-weighted average percentage change of the current & prior quarters (employment change current quarter + employment change prior quarter) divided by the employment for the current & prior quarters (employment current quarter + employment prior quarter).

Source: Quarterly Census of Employment & Wages.

The average weekly wage is calculated by dividing the total wage for the industry group by the total number of jobs for the industry group & the number of weeks in the observed quarter. Please be aware that average weekly wages at the industry group level are susceptible to wage bias due to sample size, occupational distributions, seasonal pay & bonuses, & keying error.

Prepared by L. Yetter and M. Moore, Research & Planning, WY DWS, 10/18/22.

(Table continued on page 6)

(Text continued from page 5)

Table 1: Growing Industries Report for Wyoming, Second Quarter 2022^a

Subsector (3-Digit NAICS ^b)	Sector (2-Digit NAICS)	Employment (Current Quarter)				Employment (Prior Quarter)				Growing Industries		
		2022Q2	2021Q2	N	%	2022Q1	2021Q1	N	%	Average Change		Average Weekly Wage
Securities, Commodity Contracts, Investments (523)	Finance & Insurance (52)	695	633	62	9.8	678	612	66	10.8	64	10.3	\$3,554
Professional & Technical Services (541)	Professional & Technical Services (54)	10,712	10,061	651	6.5	10,376	9,707	669	6.9	660	6.7	\$1,479
Management Of Companies & Enterprises (551)	Mgmt. Of Companies & Enter- prises (55)	933	834	99	11.9	906	771	135	17.5	117	14.7	\$4,736
Waste Management & Remediation Services (562)	Admin. & Waste Services (56)	933	843	90	10.7	866	809	57	7.0	74	8.9	\$1,049
Accom- modation (721)	Accom- modation & Food Svcs. (72)	12,465	11,603	862	7.4	10,688	9,771	917	9.4	890	8.4	\$582
Total	Total	44,367	40,548	3,819	9.4	41,530	37,760	3,770	10.0	3,795	9.7	\$1,367

^aIncludes both public & privately owned firms.^bNorth American Industry Classification System.^cThe percentage for average change is the employment-weighted average percentage change of the current & prior quarters (employment change current quarter + employment change prior quarter) divided by the employment for the current & prior quarters (employment current quarter + employment prior quarter).

Source: Quarterly Census of Employment & Wages.

The average weekly wage is calculated by dividing the total wage for the industry group by the total number of jobs for the industry group & the number of weeks in the observed quarter. Please be aware that average weekly wages at the industry group level are susceptible to wage bias due to sample size, occupational distributions, seasonal pay & bonuses, & keying error.

Prepared by L. Yetter and M. Moore, Research & Planning, WY DWS, 10/18/22.

Table 2: Declining Industries Report for Wyoming, Second Quarter 2022^a

Subsector (3-Digit NAICS ^b)	Sector (2-Digit NAICS)	Employment (Current Quarter)				Employment (Prior Quarter)				Declining Industries		
		2022Q2	2021Q2	N	%	2022Q1	2021Q1	N	%	Average Change		Average Weekly Wage
Agriculture & Forestry Support Activities (115)	Agriculture, Forestry, Fishing & Hunting (11)	258	288	-30	-10.4	184	223	-39	-17.5	-35	-14.0	\$753
Petroleum & Coal Products Manufacturing (324)	Manufacturing (31- 33)	1,073	1,147	-74	-6.5	1,054	1,188	-134	-11.3	-104	-8.9	\$2,382
Pipeline Transportation (486)	Transportation & Ware- housing (48-49)	767	839	-72	-8.6	761	846	-85	-10.0	-79	-9.3	\$1,966
Other Information Services (519)	Information (51)	537	586	-49	-8.4	525	574	-49	-8.5	-49	-8.4	\$695
Private Households (814)	Other Services, Except Public Admin. (81)	272	304	-32	-10.5	278	299	-21	-7.0	-27	-8.8	\$784
National Security & International Affairs (928)	Public Admin. (92)	1,223	1,289	-66	-5.1	1,246	1,324	-78	-5.9	-72	-5.5	\$1,467
Total	Total	4,129	4,451	-322	-7.2	4,047	4,453	-406	-9.1	-364	-8.2	\$1,607

^aIncludes both public & privately owned firms.

^bNorth American Industry Classification System.

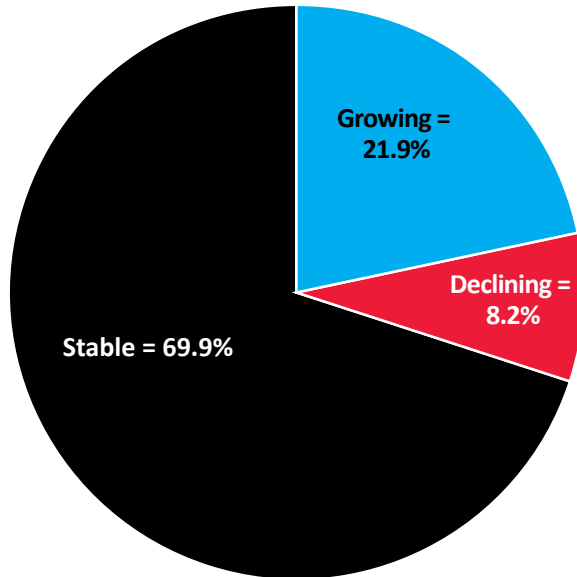
^cThe percentage for average change is the employment-weighted average percentage change of the current & prior quarters (employment change current quarter + employment change prior quarter) divided by the employment for the current & prior quarters (employment current quarter + employment prior quarter).

Source: Quarterly Census of Employment & Wages.

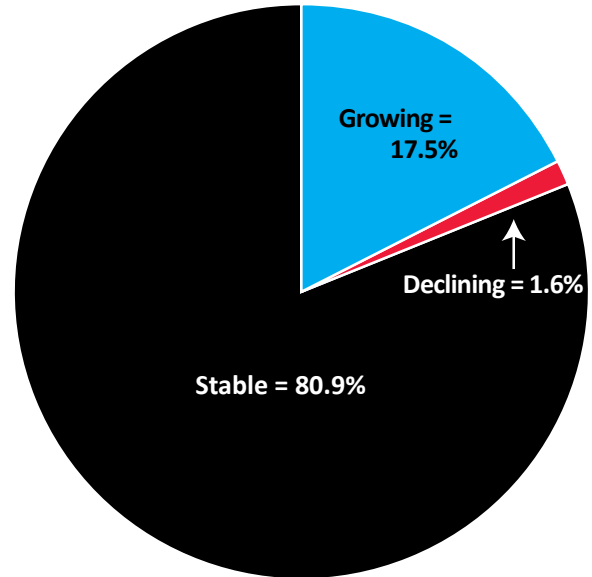
The average weekly wage is calculated by dividing the total wage for the industry group by the total number of jobs for the industry group & the number of weeks in the observed quarter. Please be aware that average weekly wages at the industry group level are susceptible to wage bias due to sample size, occupational distributions, seasonal pay & bonuses, & keying error.

Prepared by L. Yetter and M. Moore, Research & Planning, WY DWS, 10/18/22.

**Distribution of Subsectors
(3-Digit NAICS^a)**



Distribution of Employment



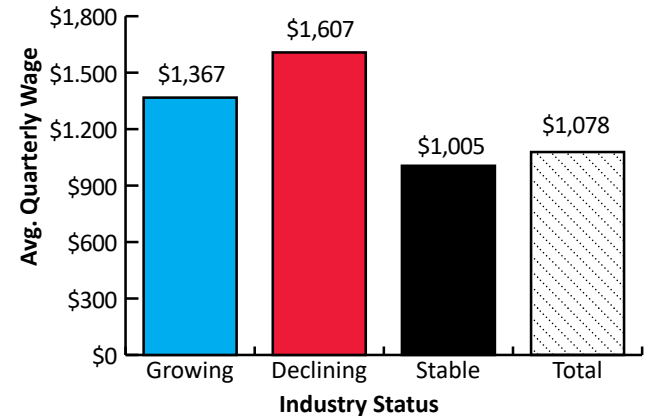
^aNorth American Industry Classification System.
 Source: Quarterly Census of Employment and Wages.
 Prepared by L. Yetter and M. Moore, Research & Planning, WY DWS, 10/18/22.

Figure 2: Distribution of Growing and Declining Industries (NAICS 3-Digit Subsector) in Wyoming, 2022Q2

Table 3: Distribution of Sectors and Employment by Growing/Declining Status in Wyoming, 2022Q2

Status	Subsectors (3-Digit NAICS)		Employment		Average Weekly Wage
	N	%	N	%	
Growing	16	21.9	44,374	17.5	\$1,367
Declining	6	8.2	4,130	1.6	\$1,607
Stable	51	69.9	205,608	80.9	\$1,005
Total	73	100.0	254,112	100.0	\$1,078

Source: Quarterly Census of Employment and Wages.
 Prepared by L. Yetter and M. Moore, Research & Planning, WY DWS, 10/18/22.



Source: Quarterly Census of Employment and Wages.
 Prepared by L. Yetter, Research & Planning, WY DWS, 10/18/22.

Figure 3: Average Weekly Wage of Growing and Declining Industries in Wyoming, 2022Q2



This publication was produced by the Research & Planning section of the Wyoming Department of Workforce Services.

**Research & Planning
P.O. Box 2760
Casper, WY 82602
Phone: (307) 473-3807
Fax: (307) 473-3834
Website: <https://doe.state.wy.us/LMI>
Email: dws-researchplanning@wyo.gov**

Material contained in this publication is in the public domain
and may be reproduced without special permission provided that source credit is given to:

Wyoming Growing and Declining Industries Report, Second Quarter 2022, Wyoming Department of Workforce Services, Research & Planning

This workforce product was funded by a grant awarded by the U.S. Department of Labor's Employment and Training Administration. The product was created by the recipient and does not necessarily reflect the official position of the U.S. Department of Labor. The U.S. Department of Labor makes no guarantees, warranties, or assurances of any kind, express or implied, with respect to such information, including any information on linked sites and including, but not limited to, accuracy of the information or its completeness, timeliness, usefulness, adequacy, continued availability, or ownership. This product is copyrighted by the institution that created it. Internal use by an organization and/or personal use by an individual for non-commercial purposes is permissible. All other uses require the prior authorization of the copyright owner.