

Wyoming Growing and Declining Industries Report

Fourth Quarter 2021

Prepared by: Michael Moore, Research Supervisor
Research & Planning, Wyoming Department of Workforce Services

Published April 27, 2022



Wyoming Growing and Declining Industries Report, Fourth Quarter 2021

Wyoming Department of Workforce Services

Robin Sessions Cooley, Director

Research & Planning

Tony Glover, Manager

Carola Cowan, Bureau of Labor Statistics Programs Supervisor

Michael Moore, Research Supervisor

Prepared by:

Michael Moore, Research Supervisor

Editorial Committee:

David Bullard, Jaime Cruz, Matthew Halama, Lisa Knapp, Chris McGrath, Michael Moore, and Laura Yetter

Published April 27, 2022.

©2022 by the Wyoming Department of Workforce Services, Research & Planning

Department of Workforce Services Nondiscrimination Statement

The Department of Workforce Services does not discriminate on the basis of race, color, religion, national origin, sex, age, or disability. It is our intention that all individuals seeking services from our agency be given equal opportunity and that eligibility decisions be based upon applicable statutes, rules, and regulations.

Research & Planning

P.O. Box 2760

Casper, WY 82602

Phone: (307) 473-3807

Fax: (307) 473-3834

R&P Website: <https://doe.state.wy.us/LMI/>

Growing and Declining Industries: <https://doe.state.wy.us/LMI/industries.htm>

URL for this report: https://doe.state.wy.us/LMI/G_DInd/Report_21Q4.pdf

"Your Source for Wyoming Labor Market Information"

Who We Are

Research & Planning (R&P) functions as an exclusively statistical entity within the Wyoming Department of Workforce Services. R&P collects, analyzes, and publishes timely and accurate labor market information (LMI) meeting established statistical standards. We work to make the labor market more efficient by providing the public and the public's representatives with the information needed for evidence-based, informed decision making.



Wyoming Growing and Declining Industries Report, 2021Q4

by: Michael Moore, Research Supervisor

A *growing* or *declining* industry is defined as an industry's employment level increasing or decreasing for two consecutive quarters by 5% or more compared to the prior the year. For example, all industries that grew or declined in employment by at least 5% from third quarter 2020 to third quarter 2021 (2020Q3 to 2021Q3) and subsequently from fourth quarter 2020 to fourth quarter 2021 (2020Q4 to 2021Q4) were included in the respective tables in this report.

Industries are defined by the North American Industry Classification System (NAICS). For this research, growing and declining industries were determined at the three-digit subsector level. For more information on NAICS, please see <https://www.census.gov/naics/>.

The database used to generate this information was the Quarterly Census of Employment and Wages (QCEW) file, which has roughly a half-year time lag from the distribution of this report. Growing and declining industry information is updated every quarter when new QCEW data become available. Only subsectors with employment sizes of 100 or more are included in these lists. Consequently, while employment in other industries may meet the growth criteria, that growth is taking place in industries with employment of less than 100.

For example, on the growing industries table (see Table 1, pages 5-7), average monthly employment for computer & electronic product manufacturing (NAICS 334) grew by 55.6% (110 jobs) over the year in 2021Q3 and 50.0% (102 jobs) in

Growing and Declining Industries

Historical growing and declining industry data for Wyoming are now available online at <https://doe.state.wy.us/LMI/industries.htm>.

2021Q4, thus qualifying as a growing industry for 2021Q4. The average growth rate for 2021Q3 and 2021Q4 for computer & electronic product manufacturing was 52.8%. Wyoming had 21 growing industries in 2021Q4, which accounted for 25.0% of all industries and 24.6% of the state's total employment (see Table 3 and Figure 2, page 9). Other examples of growing industries in 2021Q4 included support activities for mining (24.8%), management of companies & enterprises (20.9%), accommodation (19.0%), and pipeline transportation (11.8%).

The declining industry table (see Table 2, page 8) reads the same way, except with negative changes, and therefore, declining industries. There were four declining industries in 2021Q4, which made up 4.8% of all industries and 4.1% of the state's total employment. Declining industries included oil & gas extraction (-18.7% average change), petroleum & coal products manufacturing (-10.5%), nursing & residential care facilities (-10.4%), and administration of economic programs (-9.6%).

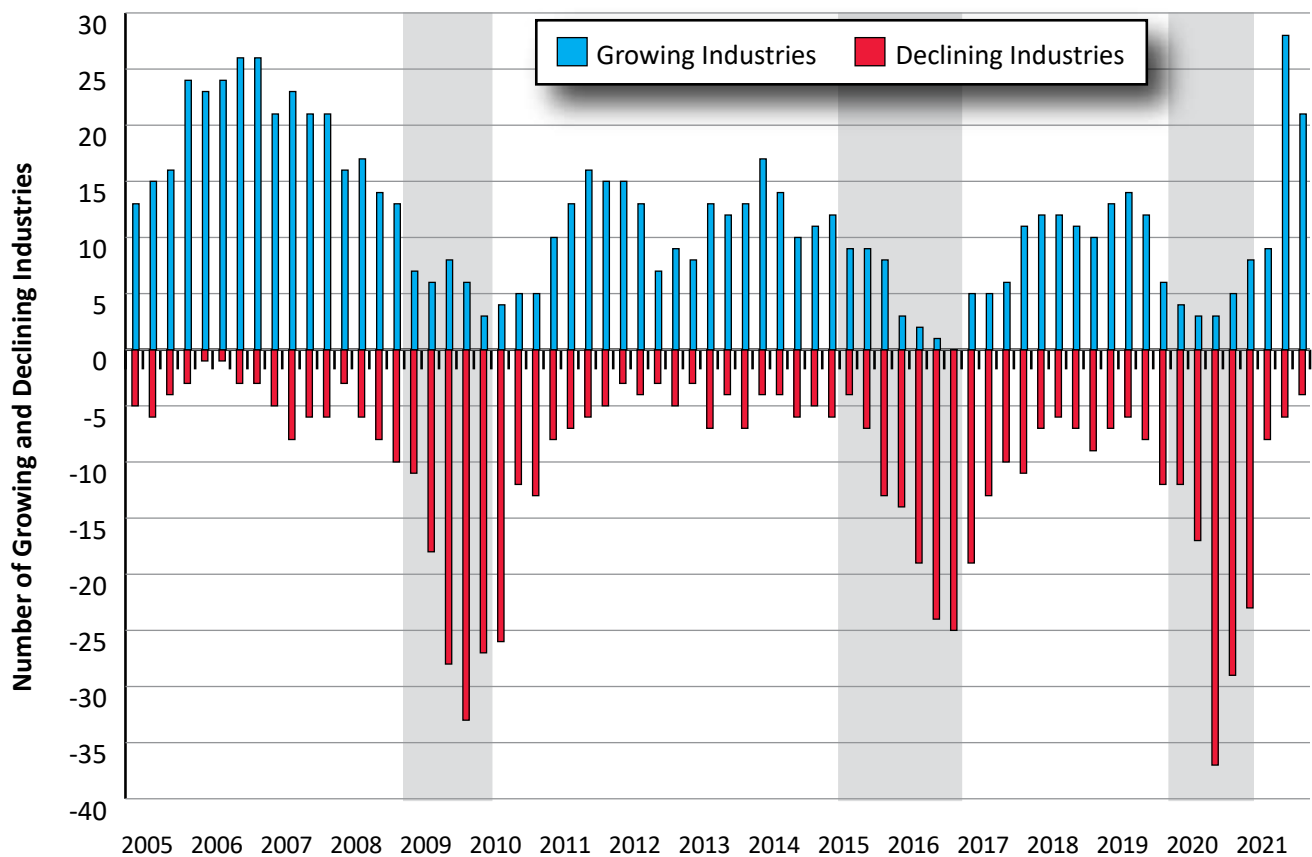
The *average weekly wage* is calculated by dividing total wages for a particular subsector by the total number of jobs and the number of weeks in the observed quarter. In 2021Q4, the average weekly

wage was \$973 for growing industries and \$1,454 for declining industries (see Table 3 and Figure 3, page 9). Overall, the state's average weekly wage was \$1,141.

During periods of economic expansion, the number of growing industries is much greater than the number of declining industries (see Figure 1). For example, the number of growing industries in Wyoming peaked at 26 in 2006Q3 and 2006Q4, compared to three and five declining industries, respectively.

But during economic downturns, there

are far more declining industries than growing industries. R&P has defined an *economic downturn* as a period of at least two consecutive quarters of over-the-year decrease in average monthly employment and total wages based on data from the QCEW. Over the last 20 years, Wyoming has experienced three periods of economic downturn: 2009Q1-2010Q1, 2015Q2-2016Q4, and 2020Q2-2021Q1. During the most recent economic downturn, which was driven by the COVID-19 pandemic and declining energy prices, Wyoming had 37 declining industries in 2020Q3 compared to just three growing industries.



Shaded areas indicate periods of economic downturn: 2009Q1-2010Q1, 2015Q2-2016Q4, and 2020Q2-2021Q1.

Source: Growing and Declining Quarterly Industry Reports, based on data from the Quarterly Census of Employment and Wages.

Prepared by M. Moore, Research & Planning, WY DWS, 4/26/22.

Figure 1: Number of Growing and Declining Industries in Wyoming by Year and Quarter, 2005Q1-2021Q4

Table 1: Growing Industries Report for Wyoming, Fourth Quarter 2021

Subsector ^a (3-Digit NAICS ^b)	Sector (2-Digit NAICS)	Employment (Current Quarter)				Employment (Prior Quarter)				Growing Industries	
		2021Q4	2020Q4	N	%	2021Q3	2020Q3	N	%	Avg. % Change ^c	Avg. Weekly Wage ^d
Support Activities for Mining (213)	Mining, Including Oil & Gas (21)	6,013	4,636	1,377	29.7	5,587	4,661	926	19.9	24.8	\$1,670
Food Manufacturing (311)	Manufacturing (31-33)	974	861	113	13.1	820	652	168	25.8	19.4	\$785
Plastics & Rubber Products Manufacturing (326)	Manufacturing (31-33)	378	325	53	16.3	358	294	64	21.8	19.0	\$1,036
Primary Metal Manufacturing (331)	Manufacturing (31-33)	126	110	16	14.5	118	105	13	12.4	13.5	\$1,503
Machinery Manufacturing (333)	Manufacturing (31-33)	655	604	51	8.4	631	593	38	6.4	7.4	\$1,219
Computer & Electronic Product Manufacturing (334)	Manufacturing (31-33)	306	204	102	50.0	308	198	110	55.6	52.8	\$1,174
Miscellaneous Manufacturing (339)	Manufacturing (31-33)	159	133	26	19.5	161	126	35	27.8	23.7	\$794
Furniture & Home Furnishings Stores (442)	Retail Trade (44-45)	704	670	34	5.1	695	651	44	6.8	5.9	\$878
Clothing & Clothing Accessories Stores (448)	Retail Trade (44-45)	1,356	1,276	80	6.3	1,355	1,181	174	14.7	10.5	\$571

^aIncludes both public and privately owned firms.

^bNorth American Industry Classification System.

^cThe percentage for average change is the employment-weighted average percentage change of the current and prior quarters (employment change current quarter + employment change prior quarter) divided by the employment for the current and prior quarters (employment current quarter + employment prior quarter).

^dThe average weekly wage is calculated by dividing the total wage for the industry group by the total number of jobs for the industry group and the number of weeks in the observed quarter. Please be aware that average weekly wages at the industry group level are susceptible to wage bias due to sample size, occupational distributions, seasonal pay and bonuses, and keying error.

The average weekly wage for all growing industries in 2021Q4 was \$973.

Source: Quarterly Census of Employment and Wages.

Prepared by M. Moore, Research & Planning, WY DWS, 4/26/22.

(Table continued on page 6)

(Text continued from page 5)

Table 1: Growing Industries Report for Wyoming, Fourth Quarter 2021

Subsector ^a (3-Digit NAICS ^b)	Sector (2-Digit NAICS)	Employment (Current Quarter)				Employment (Prior Quarter)				Growing Industries	
		2021Q4	2020Q4	Over-the-Year Change		2021Q3	2020Q3	Over-the-Year Change		Avg. % Change ^c	Avg. Weekly Wage ^d
				N	%			N	%		
Sporting Goods, Hobby, Book & Music Stores (451)	Retail Trade (44-45)	1,601	1,460	141	9.7	1,534	1,422	112	7.9	8.8	\$460
Miscellaneous Store Retailers (453)	Retail Trade (44-45)	1,492	1,380	112	8.1	1,579	1,442	137	9.5	8.8	\$590
Pipeline Transportation (486)	Transportation & Warehousing (48-49)	848	753	95	12.6	843	759	84	11.1	11.8	\$2,283
Couriers & Messengers (492)	Transportation & Warehousing (48-49)	1,501	1,411	90	6.4	1,262	1,161	101	8.7	7.5	\$904
Warehousing & Storage (493)	Transportation & Warehousing (48-49)	2,098	1,987	111	5.6	2,085	1,879	206	11.0	8.3	\$906
Motion Picture & Sound Recording Industries (512)	Information (51)	360	298	62	20.8	368	313	55	17.6	19.2	\$524
Rental & Leasing Services (532)	Real Estate & Rental & Leasing (53)	1,542	1,449	93	6.4	1,549	1,454	95	6.5	6.5	\$1,172
Professional & Technical Services (541)	Professional & Technical Services (54)	10,290	9,556	734	7.7	10,266	9,497	769	8.1	7.9	\$1,739
Management Of Companies & Enterprises (551)	Management of Companies & Enterprises (55)	918	751	167	22.2	882	738	144	19.5	20.9	\$6,593
Amusements, Gambling, & Recreation (713)	Arts, Entertainment, & Recreation (71)	2,835	2,601	234	9.0	3,566	3,140	426	13.6	11.3	\$523

^aIncludes both public and privately owned firms.^bNorth American Industry Classification System.^cThe percentage for average change is the employment-weighted average percentage change of the current and prior quarters (employment change current quarter + employment change prior quarter) divided by the employment for the current and prior quarters (employment current quarter + employment prior quarter).^dThe average weekly wage is calculated by dividing the total wage for the industry group by the total number of jobs for the industry group and the number of weeks in the observed quarter. Please be aware that average weekly wages at the industry group level are susceptible to wage bias due to sample size, occupational distributions, seasonal pay and bonuses, and keying error.

The average weekly wage for all growing industries in 2021Q4 was \$973.

Source: Quarterly Census of Employment and Wages.

Prepared by M. Moore, Research & Planning, WY DWS, 4/26/22.

(Table continued on page 7)

(Text continued from page 6)

Table 1: Growing Industries Report for Wyoming, Fourth Quarter 2021

Subsector ^a (3-Digit NAICS ^b)	Sector (2-Digit NAICS)	Employment (Current Quarter)				Employment (Prior Quarter)				Growing Industries	
		2021Q4	2020Q4	Over-the-Year Change		2021Q3	2020Q3	Over-the-Year Change		Avg. % Change ^c	Avg. Weekly Wage ^d
				N	%			N	%		
Accom- modation (721)	Accom- modation & Food Services (72)	10,483	9,178	1,305	14.2	14,363	11,610	2,753	23.7	19.0	\$648
Food Services & Drinking Places (722)	Accom- modation & Food Services (72)	21,087	19,921	1,166	5.9	22,500	20,916	1,584	7.6	6.7	\$420
Amusements, Gambling, & Recreation (713)	Arts, Entertainment, & Recreation (71)	3,530	3,140	390	12.4	3,028	2,157	871	40.4	26.4	\$511
Accom- modation (721)	Accom- modation & Food Services (72)	14,337	11,610	2,727	23.5	11,616	8,040	3,576	44.5	34.0	\$640
Food Services & Drinking Places (722)	Accom- modation & Food Services (72)	22,366	20,916	1,450	6.9	21,200	16,640	4,560	27.4	17.2	\$431
Total	Total	65,720	59,557	6,163	10.3	70,822	62,785	8,037	12.8	11.6	\$973

^aIncludes both public and privately owned firms.^bNorth American Industry Classification System.^cThe percentage for average change is the employment-weighted average percentage change of the current and prior quarters (employment change current quarter + employment change prior quarter) divided by the employment for the current and prior quarters (employment current quarter + employment prior quarter).^dThe average weekly wage is calculated by dividing the total wage for the industry group by the total number of jobs for the industry group and the number of weeks in the observed quarter. Please be aware that average weekly wages at the industry group level are susceptible to wage bias due to sample size, occupational distributions, seasonal pay and bonuses, and keying error.

The average weekly wage for all growing industries in 2021Q4 was \$973.

Source: Quarterly Census of Employment and Wages.

Prepared by M. Moore, Research & Planning, WY DWS, 4/26/22.

Table 2: Declining Industries Report for Wyoming, Fourth Quarter 2021

Subsector ^a (3-Digit NAICS ^b)	Sector (2-Digit NAICS)	Employment (Current Quarter)				Employment (Prior Quarter)				Declining Industries	
		2021Q4	2020Q4	Over-the-Year Change		2021Q3	2020Q3	Over-the-Year Change		Avg. % Change ^c	Avg. Weekly Wage ^d
Oil & Gas Extraction (211)	Mining, Including Oil & Gas (21)	2,183	2,704	-521	-19.3	2,221	2,711	-490	-18.1	-18.7	\$2,725
Petroleum & Coal Products Manufacturing (324)	Manufacturing (31-33)	1,097	1,199	-102	-8.5	1,136	1,298	-162	-12.5	-10.5	\$2,508
Nursing & Residential Care Facilities (623)	Health Care & Social Assistance (62)	4,553	5,066	-513	-10.1	4,613	5,166	-553	-10.7	-10.4	\$840
Administration of Economic Programs (926)	Public Administration (92)	3,026	3,196	-170	-5.3	3,176	3,685	-509	-13.8	-9.6	\$1,079
Total	Total	10,858	12,163	-1,305	-10.7	11,145	12,859	-1,714	-13.3	-12.0	\$1,454

^aIncludes both public and privately owned firms.

^bNorth American Industry Classification System.

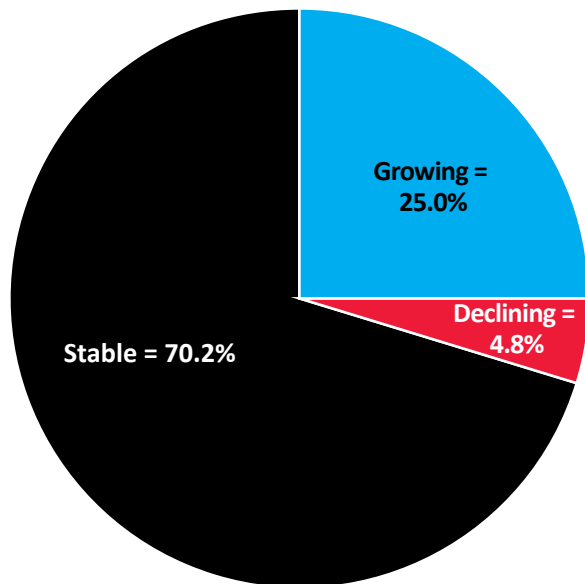
^cThe percentage for average change is the employment-weighted average percentage change of the current and prior quarters (employment change current quarter + employment change prior quarter) divided by the employment for the current and prior quarters (employment current quarter + employment prior quarter).

^dThe average weekly wage is calculated by dividing the total wage for the industry group by the total number of jobs for the industry group and the number of weeks in the observed quarter. Please be aware that average weekly wages at the industry group level are susceptible to wage bias due to sample size, occupational distributions, seasonal pay and bonuses, and keying error.

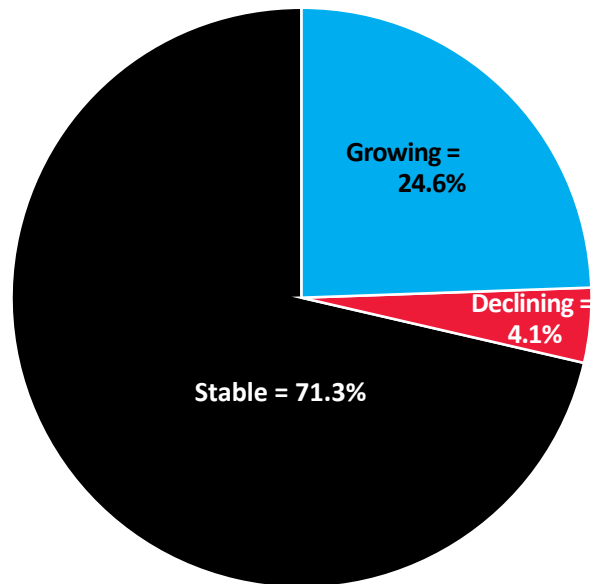
The average weekly wage for all declining industries in 2021Q4 was \$1,454.

Source: Quarterly Census of Employment and Wages.

Prepared by M. Moore, Research & Planning, WY DWS, 4/26/22.

Distribution of Subsectors
(3-Digit NAICS^a)

Distribution of Employment



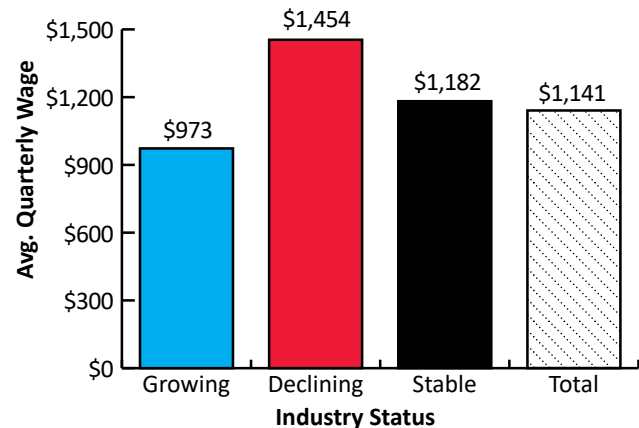
^aNorth American Industry Classification System.
 Source: Quarterly Census of Employment and Wages.
 Prepared by M. Moore, Research & Planning, WY DWS, 4/26/22.

Figure 2: Distribution of Growing and Declining Industries (NAICS 3-Digit Subsector) in Wyoming, 2021Q4

Table 3: Distribution of Sectors and Employment by
Growing/Declining Status in Wyoming, 2021Q4

Status	Subsectors (3-Digit NAICS)		Employment		Average Weekly Wage
	N	%	N	%	
Growing	21	25.0	65,726	24.6	\$973
Declining	4	4.8	10,859	4.1	\$1,454
Stable	59	70.2	190,135	71.3	\$1,182
Total	84	100.0	266,720	100.0	\$1,141

Source: Quarterly Census of Employment and Wages.
 Prepared by M. Moore, Research & Planning, WY DWS,
 4/26/22.



Source: Quarterly Census of Employment and Wages.
 Prepared by M. Moore, Research & Planning, WY DWS, 4/26/22.

Figure 3: Average Weekly Wage of Growing and Declining Industries in Wyoming, 2021Q4

This publication was produced by the Research & Planning section of the Wyoming Department of Workforce Services.

**Research & Planning
P.O. Box 2760
Casper, WY 82602
Phone: (307) 473-3807
Fax: (307) 473-3834
Website: <https://doe.state.wy.us/LMI>
Email: dws-researchplanning@wyo.gov**

Material contained in this publication is in the public domain
and may be reproduced without special permission provided that source credit is given to:

Wyoming Growing and Declining Industries Report, Fourth Quarter 2021, Wyoming Department of Workforce Services, Research & Planning

This workforce product was funded by a grant awarded by the U.S. Department of Labor's Employment and Training Administration. The product was created by the recipient and does not necessarily reflect the official position of the U.S. Department of Labor. The U.S. Department of Labor makes no guarantees, warranties, or assurances of any kind, express or implied, with respect to such information, including any information on linked sites and including, but not limited to, accuracy of the information or its completeness, timeliness, usefulness, adequacy, continued availability, or ownership. This product is copyrighted by the institution that created it. Internal use by an organization and/or personal use by an individual for non-commercial purposes is permissible. All other uses require the prior authorization of the copyright owner.